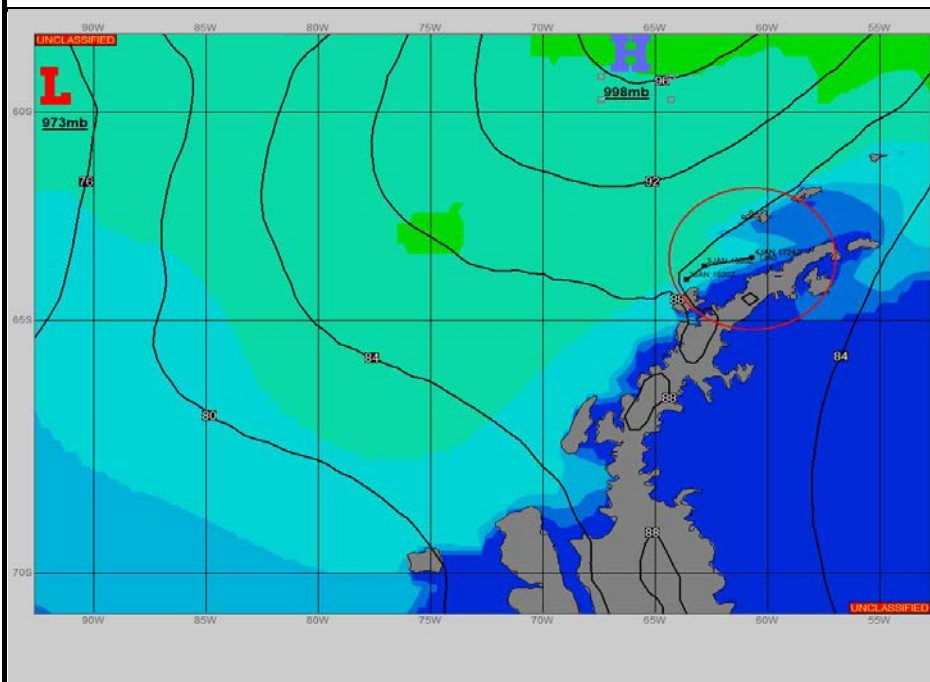
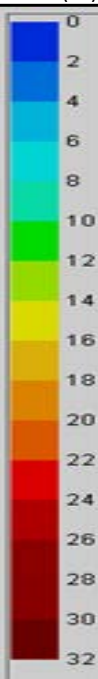


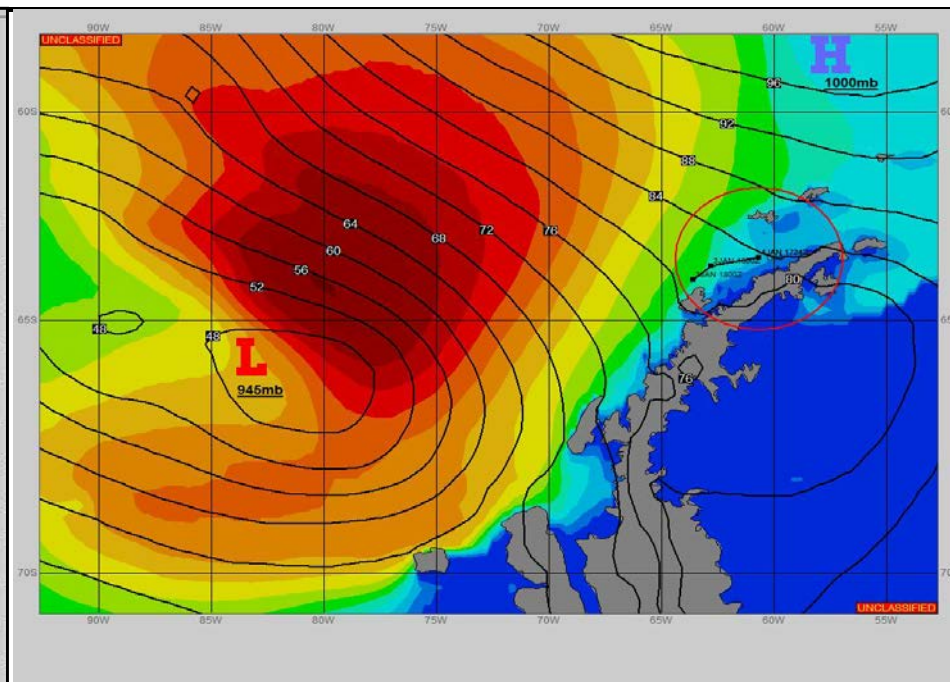
SURFACE ANALYSIS 5-Jan-2023 06Z



Seas (FT)



SURFACE FORECAST 6-Jan-2023 18Z



METSIT 06Z 5-Jan

THE PLEASANT HIGH PRESSURE OVERHEAD WILL QUICKLY GIVE WAY TO AN INCOMING LOW DROPPING INTO THE BELLINGSHAUSEN FROM THE NORTH. AS IT DEEPENDS AND APPROACHES THE PENINSULA, CLOUDS WILL INCREASE ALONG WITH SLEET AND FOG, DROPPING VISIBILITIES QUITE HEAVILY. THE WINDS WILL SHIFT TO A MORE NORTHERLY COMPONENT, BRINGING WARMER TEMPERATURES BUT SLIGHTLY ROUGHER SEAS. THE LOW WILL REMAIN AT ARM'S LENGTH IN THE BELLINGSHAUSEN THROUGH THE PERIOD.

FORECASTER NOTES

WINDS MAY DIFFER FROM THOSE FORECAST DUE TO FUNNELING/SHELTERING EFFECTS OF ISLANDS.

VALID TIME	5-Jan 12Z	5-Jan 18Z	6-Jan 00Z	6-Jan 06Z	6-Jan 12Z	6-Jan 18Z	7-Jan 00Z	7-Jan 06Z
SKY CONDITION	PARTLY CLOUDY	PARTLY CLOUDY	PARTLY CLOUDY	CLOUDY	CLOUDY	CLOUDY	CLOUDY	CLOUDY
WEATHER	NONE	NONE	NONE	FOG	MIXED & FOG	MIXED & FOG	MIXED & FOG	MIXED & FOG
VISIBILITY (NM)	UNRESTRICTED	UNRESTRICTED	UNRESTRICTED	1/2 - 1	<1/2	1/2 - 1	1/2 - 1	1/2 - 1
SFC WINDS (DIR & KTS)	SW 10-15 GUST 25	SW 10-15 GUST 20	W 5-10	NW 15-20 GUST 30	N 10-15 GUST 25	NW 15-20 GUST 30	NW 10-15 GUST 25	NW 10-15 GUST 20
SFC MAX/MIN (°C)	1 / -3			3 / 0				
SST RANGE (°C)	2 / 0			2 / 0				
SEAS (DIR & FT)	E 5-7	E 5-7	E 4-6	E 4-6	SE 4-6	SE 5-7	SE 5-7	E 9-11
ICE ACCRETION	LIGHT	LIGHT	LIGHT	LIGHT	LIGHT	LIGHT	LIGHT	LIGHT