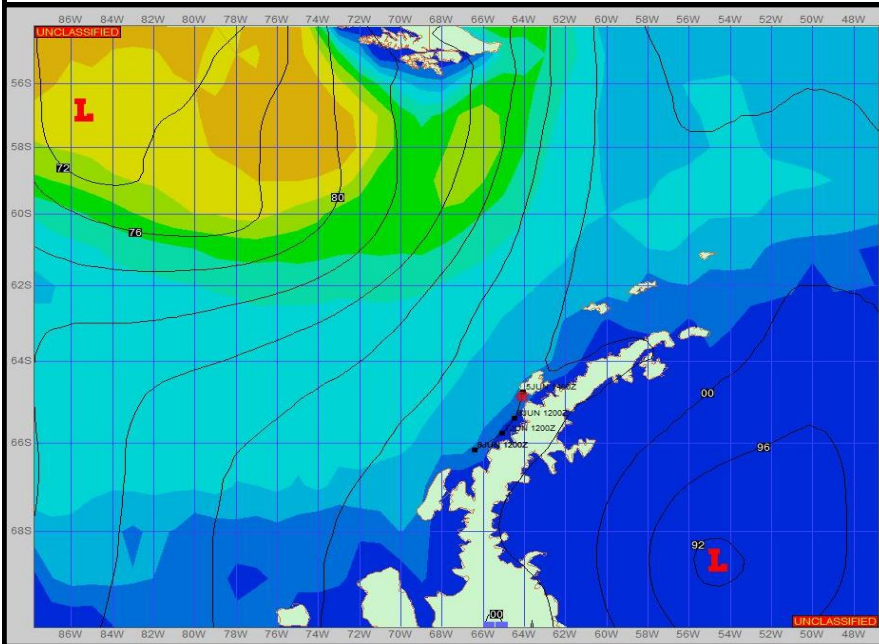


Ref A: MOVE REP 23-05 Sealing

Ref B:

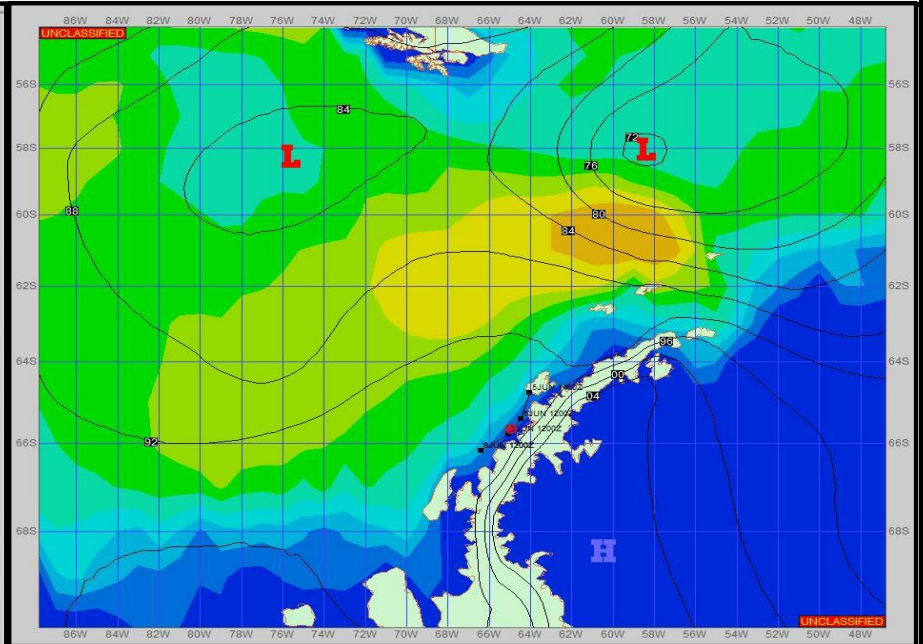
SURFACE ANALYSIS 5-Jun-2023 18Z



Seas (FT)



SURFACE FORECAST 7-Jun-2023 06Z



METSIT 21Z 5-Jun

Between a series of lows and a high to the south is a semi-tight pressure gradient. This keeps the winds in the double digits with occasional gusty winds. These winds will blow to the west throughout the forecast period. Winds may differ from those forecast due to funneling/sheltering effects of islands. Temperatures cool as you progress south to the science area. Sea states will be out of the northwest with a short period of time where a bubble of higher swells move in from the west.

FORECASTER NOTES

MCMURDO STATION WINTER OPERATIONS ARE IN EFFECT. WEAX SUPPORT WILL BE DONE BY THE MCMURDO STATION WEATHER OFFICE AND ISSUED BY 2100Z. SEE CONTACT INFO BELOW.

VALID TIME	5-Jun 21Z	6-Jun 06Z	6-Jun 12Z	6-Jun 18Z	7-Jun 00Z	7-Jun 06Z	7-Jun 12Z	7-Jun 18Z
SKY CONDITION	CLOUDY	CLOUDY	CLOUDY	CLOUDY	CLOUDY	CLOUDY	CLOUDY	CLOUDY
WEATHER	NONE	NONE	NONE	NONE	NONE	NONE	NONE	NONE
VISIBILITY (NM)	UNRESTRICTED	UNRESTRICTED	UNRESTRICTED	UNRESTRICTED	UNRESTRICTED	UNRESTRICTED	UNRESTRICTED	UNRESTRICTED
SFC WINDS (DIR & KTS)	WSW 10-15 GUST 20	W 10-15	W 10-15	W 10-15 GUST 20	W 10-15	W 10-15 GUST 20	W 15-20 GUST 25	W 10-15 GUST 20
SFC MAX/MIN (°C)	-1 / -3				-3 / -7			
SST RANGE (°C)	-1 / -2				-1 / -2			
SEAS (DIR & FT)	NW 2-4	NW 2-4	NW 2-4	NW 4-6	NW 2-4	NW 2-4	NW 2-4	NW 2-4
ICE ACCRETION	LIGHT	LIGHT	LIGHT	LIGHT	LIGHT	LIGHT	LIGHT	LIGHT