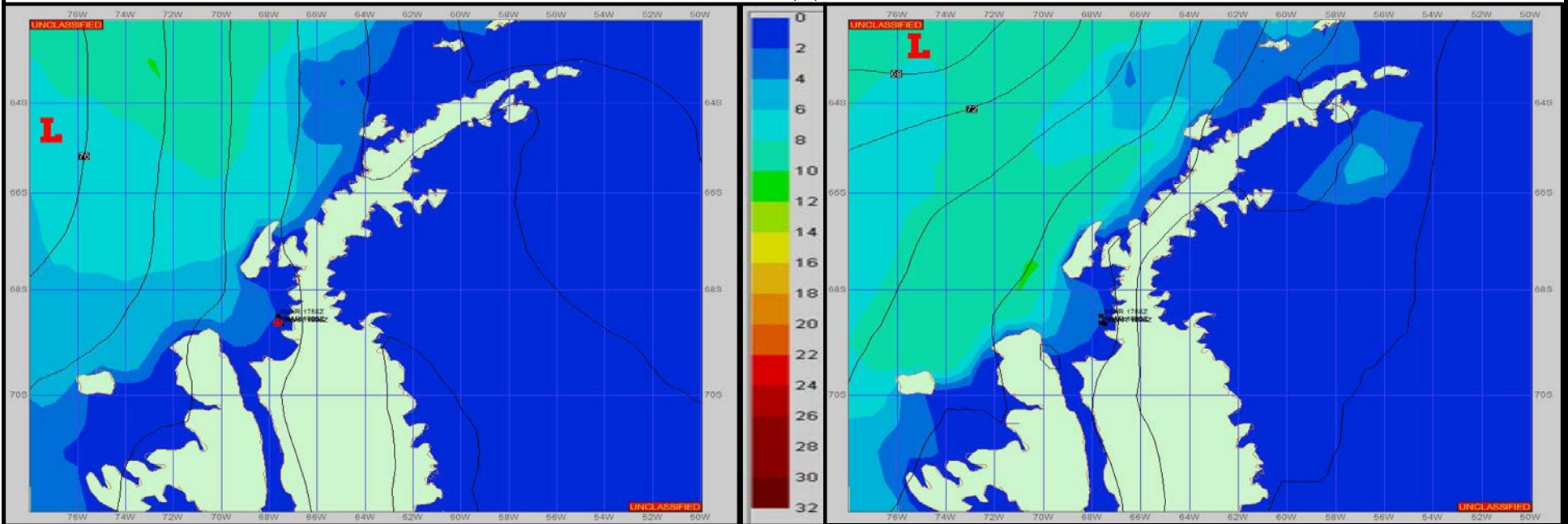


SURFACE ANALYSIS 5-Mar-2023 21Z

Seas (FT)

SURFACE FORECAST 7-Mar-2023 06Z



METSIT 21Z 5-Mar A low pressure system will transit from NW to NNW out in the open seas, northwest of your location. It is far enough out that there should be minimal impacts around your location. There will be a brief window with some light rain early in the forecast period. Winds will be generally from the SW-W. Seas will be relatively calm to 4 ft from the NW. However, terrain induced conditions can still exist, especially closer in land. Winds may differ due to funneling/sheltering effects of the islands.

FORECASTER NOTES MCMURDO STATION WINTER OPERATIONS ARE NOW IN EFFECT. WEAX SUPPORT WILL BE DONE BY THE MCMURDO STATION WEATHER OFFICE AND ISSUED BY 2100Z. SEE CONTACT INFO BELOW.

VALID TIME	5-Mar 21Z	6-Mar 06Z	6-Mar 12Z	6-Mar 18Z	7-Mar 00Z	7-Mar 06Z	7-Mar 12Z	7-Mar 18Z
SKY CONDITION	CLOUDY	CLOUDY	CLOUDY	CLOUDY	CLOUDY	CLOUDY	CLOUDY	CLOUDY
WEATHER	NONE	RAIN	RAIN	NONE	NONE	NONE	NONE	NONE
VISIBILITY (NM)	4 - 6	UNRESTRICTED	UNRESTRICTED	UNRESTRICTED	3 - 5	4 - 6	4 - 6	UNRESTRICTED
SFC WINDS (DIR & KTS)	SW 10-15	SW 10-15	SW 10-15	W 10-15	W 10-15	SW 10-15	W 10-15	W 10-15
SFC MAX/MIN (°C)	2 / 0				1 / 0			
SST RANGE (°C)	0 / 0				0 / 0			
SEAS (DIR & FT)	NW 0-2	NW 0-2	NW 2-4	NW 2-4	NW 2-4	NW 2-4	NW 0-2	NW 0-2
ICE ACCRETION	LIGHT	LIGHT	LIGHT	LIGHT	LIGHT	LIGHT	LIGHT	LIGHT