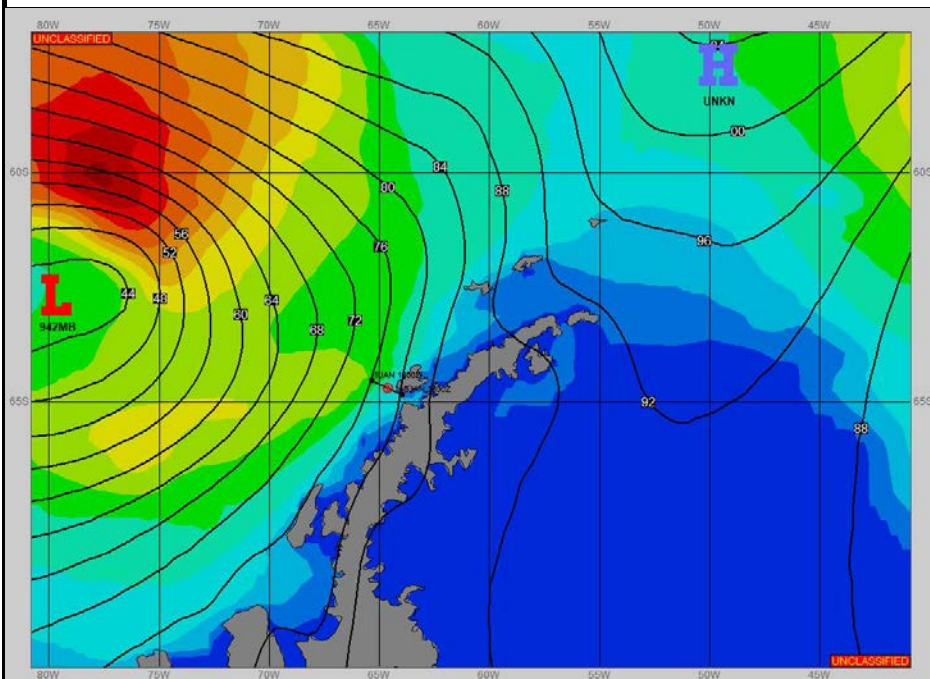


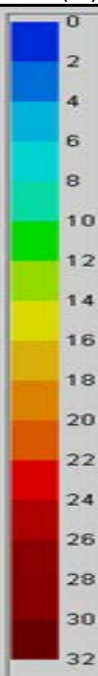
Ref A: SITREP 5 JAN 2023

Ref B:

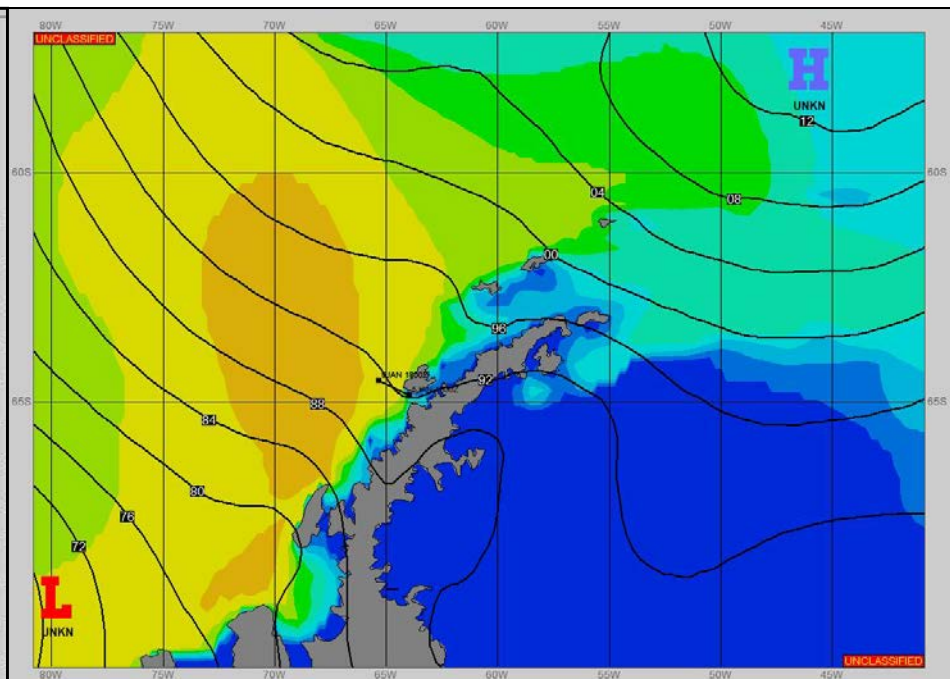
SURFACE ANALYSIS 6-Jan-2023 06Z



Seas (FT)



SURFACE FORECAST 7-Jan-2023 18Z



METSIT 06Z 6-Jan

942MB LOW NEAR 63S 080W TO DROP SOUTH INTO THE BELLINGSHAUSEN SEA MOVING A TRAILING FRONTAL BOUNDARY ACROSS THE SHIP POSITION EARLY IN THE FORECAST PERIOD. EXPECT REDUCED VISIBILITY TO LESS THAN 1 MILE AT TIMES IN RAIN AND FOG WITH WIND SPEEDS GUSTING TO NEAR 40 KNOTS. WINDS SHOULD REMAIN GUSTY AT 30-35 KNOTS FROM THE NORTHWEST-NORTH THROUGH APPROXIMATELY 07/1200Z WHEN A SECONDARY LOW PRESSURE TROUGH MOVES THROUGH AGAIN REDUCING VISIBILITY IN MIXED PRECIPITATION WITH WINDS GUSTING FROM THE NORTHEAST NEAR 40 KNOTS. EXPECT IMPROVING CONDITIONS FROM 07/1800Z.

FORECASTER NOTES

WINDS MAY DIFFER FROM THOSE FORECAST DUE TO FUNNELING/SHELTERING EFFECTS OF ISLANDS. FORECAST BASED ON COORDINATES FROM SITREP.

VALID TIME	6-Jan 12Z	6-Jan 18Z	7-Jan 00Z	7-Jan 06Z	7-Jan 12Z	7-Jan 18Z	8-Jan 00Z	8-Jan 06Z
SKY CONDITION	CLOUDY	CLOUDY	CLOUDY	CLOUDY	CLOUDY	CLOUDY	CLOUDY	CLOUDY
WEATHER	RAIN & FOG	RAIN & FOG	NONE	NONE	MIXED & FOG	MIXED & FOG	NONE	NONE
VISIBILITY (NM)	1/2 - 1	1/2 - 1	UNRESTRICTED	UNRESTRICTED	1 - 3	3 - 5	UNRESTRICTED	UNRESTRICTED
SFC WINDS (DIR & KTS)	NE 25-30 GUST 40	NW 20-25 GUST 35	NW 20-25 GUST 30	N 20-25 GUST 30	NE 25-30 GUST 40	NW 15-20	NW 10-15	NW 10-15
SFC MAX/MIN (°C)	4/1				3/1			
SST RANGE (°C)	2/1				2/1			
SEAS (DIR & FT)	N 8-11	NW 10-14	NW 14-19	NW 14-18	NW 13-17	NW 12-16	NW 12-15	NW 10-13
ICE ACCRETION	NIL	NIL	NIL	NIL	NIL	NIL	NIL	NIL