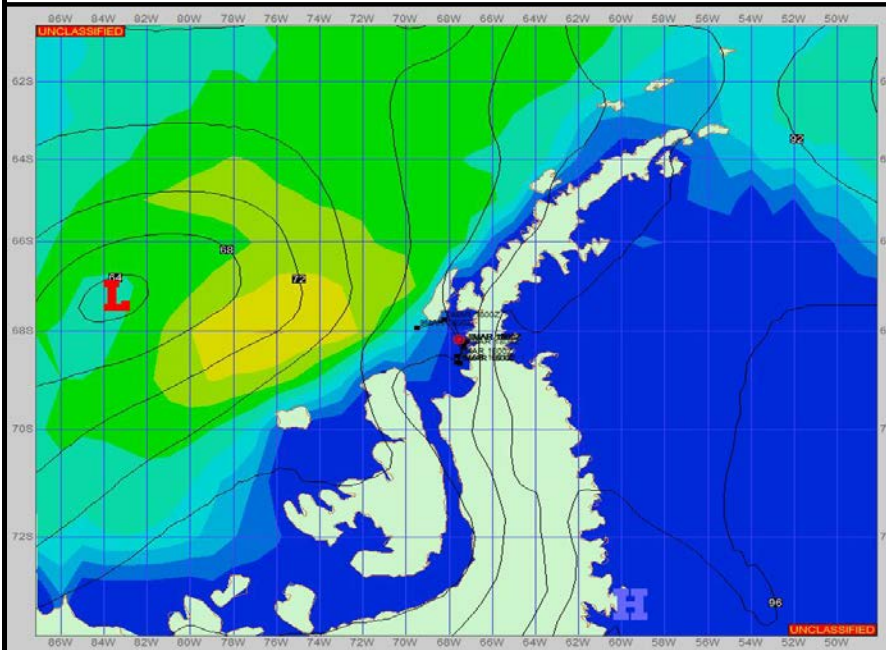
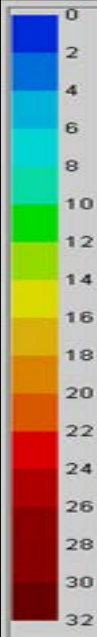


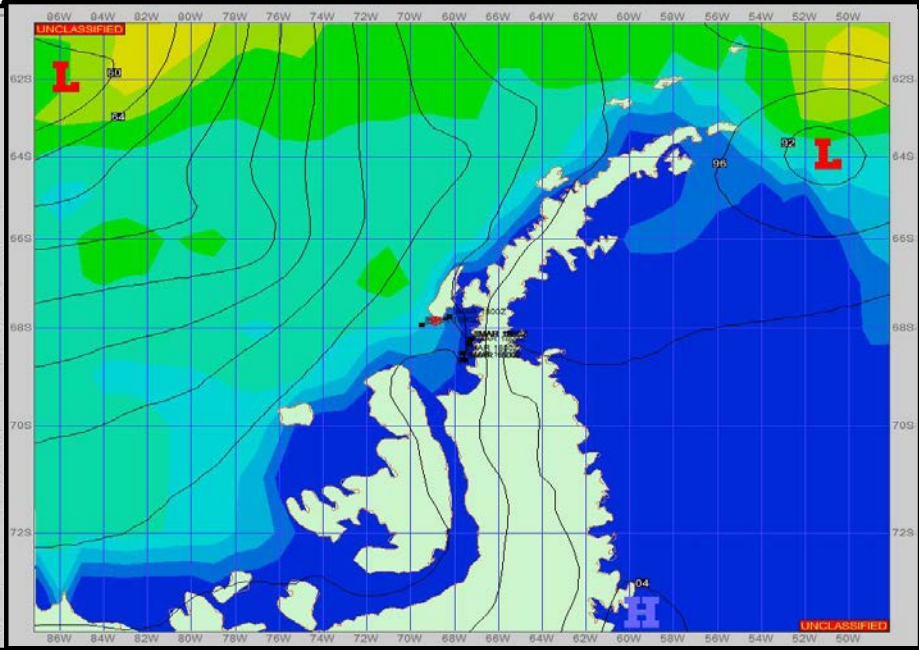
**SURFACE ANALYSIS 7-Mar-2023 21Z**



Seas (FT)



**SURFACE FORECAST 9-Mar-2023 06Z**



**METSIT 21Z 7-Mar** During this forecast period, multiple low pressure systems will pass through the region. Strong winds to initially start off with before they calm slightly but still remain high. You can expect sea states to increase throughout the period, especially if you move more into open seas. Terrain induced conditions can still exist, especially closer in land. Winds may differ due to funneling/sheltering effects of the islands.

**FORECASTER NOTES** MCMURDO STATION WINTER OPERATIONS ARE NOW IN EFFECT. WEAX SUPPORT WILL BE DONE BY THE MCMURDO STATION WEATHER OFFICE AND ISSUED BY 2100Z. SEE CONTACT INFO BELOW.

VALID TIME	7-Mar 21Z	8-Mar 06Z	8-Mar 12Z	8-Mar 18Z	9-Mar 00Z	9-Mar 06Z	9-Mar 12Z	9-Mar 18Z
SKY CONDITION	CLOUDY	CLOUDY	CLOUDY	CLOUDY	CLOUDY	CLOUDY	MOSTLY CLOUDY	MOSTLY CLOUDY
WEATHER	NONE	NONE	NONE	NONE	NONE	NONE	NONE	NONE
VISIBILITY (NM)	UNRESTRICTED	UNRESTRICTED	UNRESTRICTED	UNRESTRICTED	4 - 6	4 - 6	4 - 6	UNRESTRICTED
SFC WINDS (DIR & KTS)	NE 15-20 GUST 25	NE 15-20 GUST 30	NE 15-20 GUST 25	NE 10-15	NE 8-12	NE 8-12	ENE 10-15	E 15-20
SFC MAX/MIN (°C)	-1 / -2				-1 / -2			
SST RANGE (°C)	0 / 0				0 / 0			
SEAS (DIR & FT)	WSW 0-2	W 0-2	W 4-6	W 2-4	NW 6-8	NW 6-8	NW 6-8	NW 6-8
ICE ACCRETION	LIGHT	LIGHT	LIGHT	LIGHT	LIGHT	LIGHT	LIGHT	LIGHT