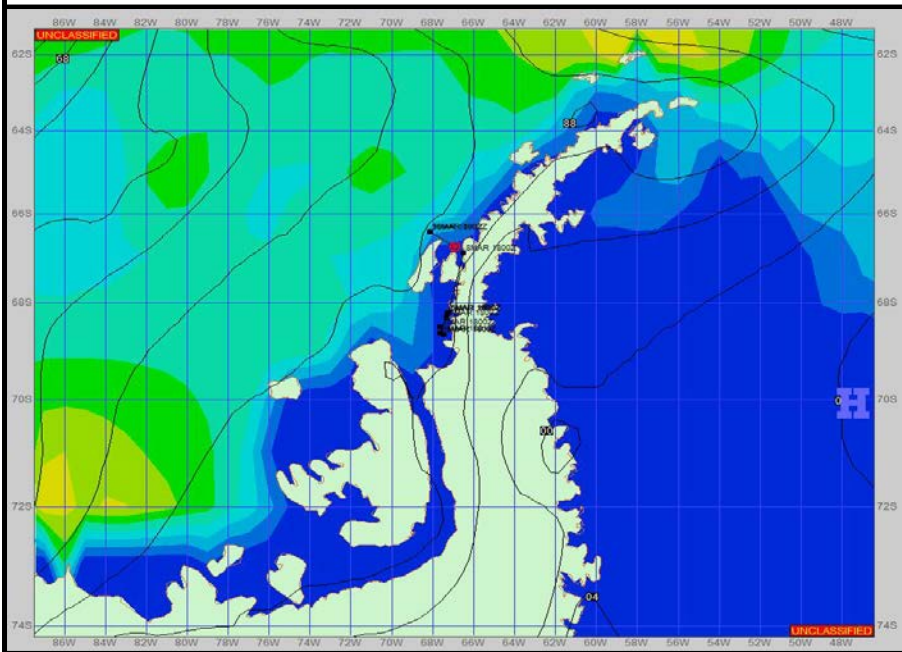
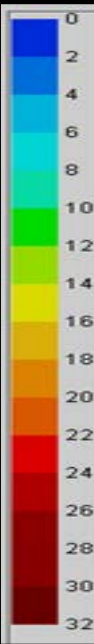


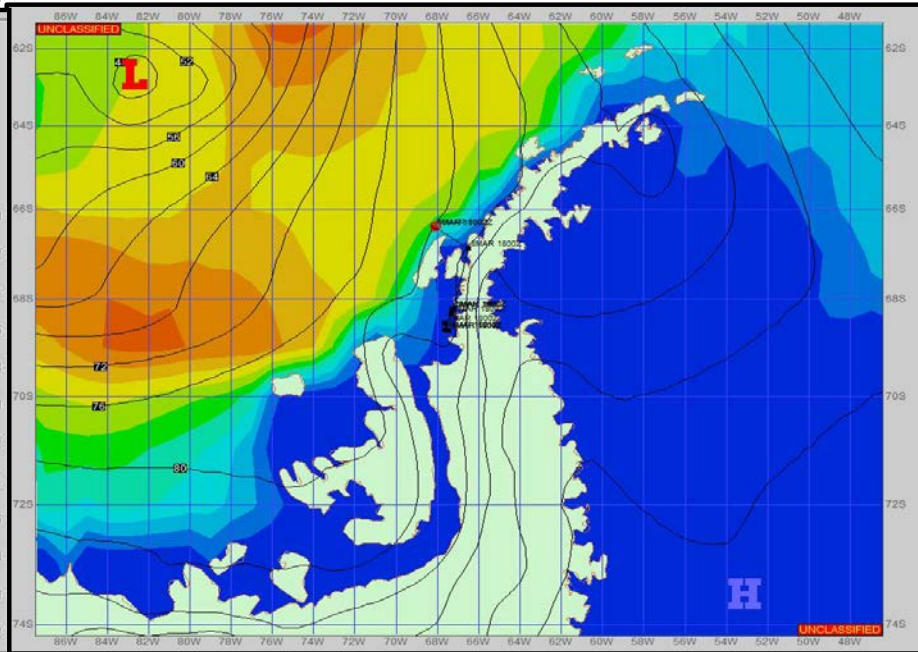
SURFACE ANALYSIS 8-Mar-2023 21Z



Seas (FT)



SURFACE FORECAST 10-Mar-2023 06Z



METSIT 21Z 8-Mar With your planned track, expect strong sustained and gusty winds switching around from a southeasterly to a northeasterly direction. With the low pressure moving in from the west, and the strong winds, expect seas to pick up significantly on the western side of the islands. Waters on the eastern sides of land will be generally protected from the high sea states. Terrain induced conditions can still exist, especially closer inland. Winds may also differ due to funneling/sheltering effects of the islands.

FORECASTER NOTES MCMURDO STATION WINTER OPERATIONS ARE NOW IN EFFECT. WEAX SUPPORT WILL BE DONE BY THE MCMURDO STATION WEATHER OFFICE AND ISSUED BY 2100Z. SEE CONTACT INFO BELOW.

VALID TIME	8-Mar 21Z	9-Mar 06Z	9-Mar 12Z	9-Mar 18Z	10-Mar 00Z	10-Mar 06Z	10-Mar 12Z	10-Mar 18Z
SKY CONDITION	CLOUDY	CLOUDY	CLOUDY	CLOUDY	CLOUDY	CLOUDY	MOSTLY CLOUDY	MOSTLY CLOUDY
WEATHER	NONE	NONE	NONE	NONE	NONE	NONE	NONE	NONE
VISIBILITY (NM)	4 - 6	4 - 6	4 - 6	UNRESTRICTED	3 - 5	3 - 5	3 - 5	UNRESTRICTED
SFC WINDS (DIR & KTS)	SE 20-25 GUST 35	SSE 15-20 GUST 30	NE 30-40 GUST 55	NE 30-40 GUST 60	NE 30-40 GUST 60	NE 20-30 GUST 45	ENE 25-35 GUST 45	ENE 25-35 GUST 45
SFC MAX/MIN (°C)	1 / 0				2 / 0			
SST RANGE (°C)	1 / 0				1 / 1			
SEAS (DIR & FT)	WSW 0-2	NW 2-4	NW 2-4	NE 6-10	NNE 10-14	NW 10-14	NW 10-14	NW 10-14
ICE ACCRETION	LIGHT	LIGHT	LIGHT	LIGHT	LIGHT	LIGHT	LIGHT	LIGHT