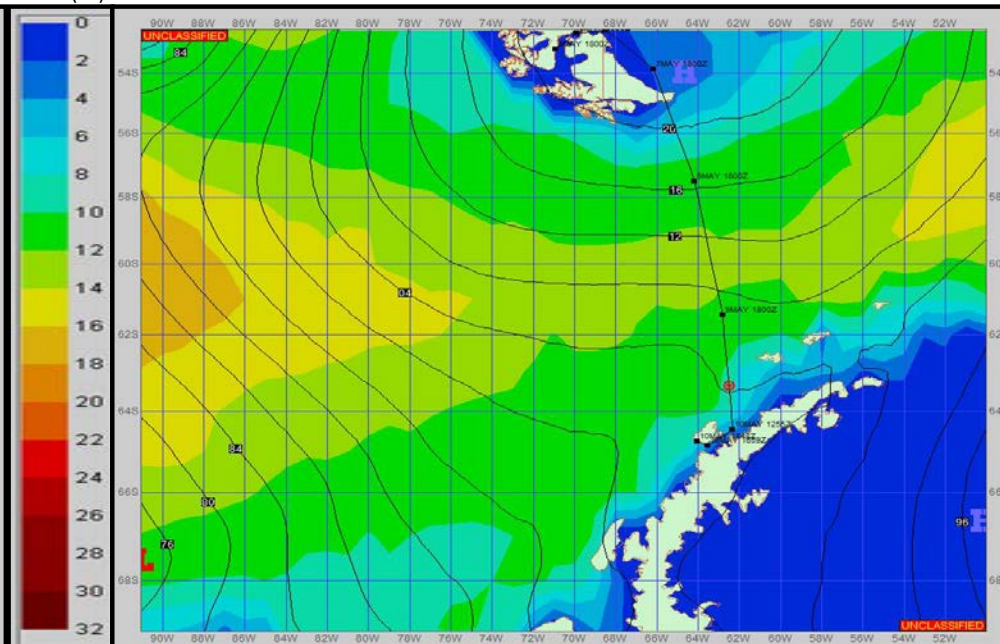
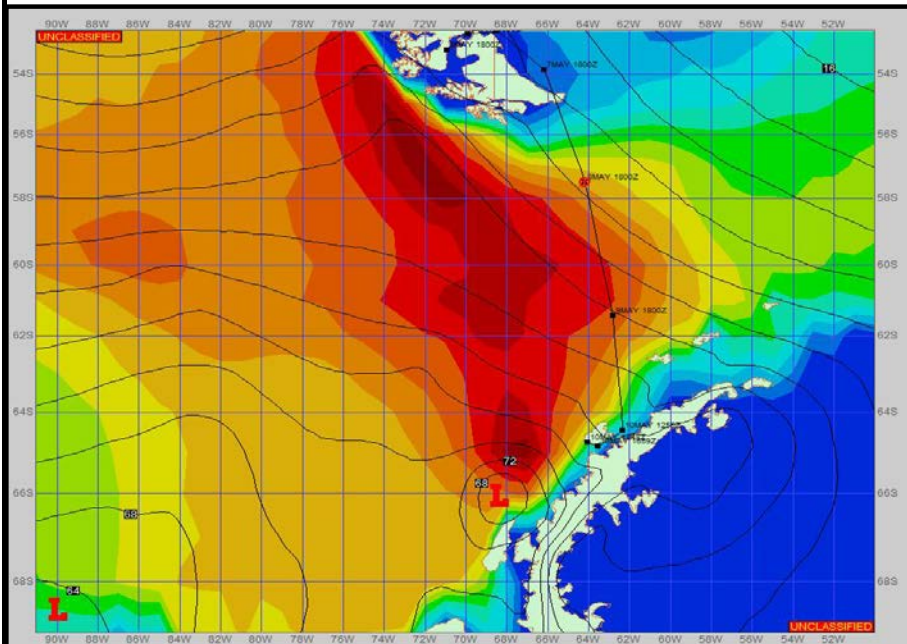


**SURFACE ANALYSIS 8-May-2023 18Z**

Seas (FT)

**SURFACE FORECAST 10-May-2023 06Z**



**METSIT 21Z**

**8-May**

The low pressure system continues moving through the area. Winds remain high until the approach to Anvers Island and the Palmer Station area. Winds may differ from those forecast due to funneling/sheltering effects of islands. Sometime around 09/04z-05z expect a wind shift from the NW to the SW as a SFC trough/front passes through. Rain associated with the SFC feature, along with the strong winds, with periods of reduced visibilities can be expected. The strong westerly sea states continue but decreases as you continue moving south.

**FORECASTER NOTES**

MCMURDO STATION WINTER OPERATIONS ARE IN EFFECT. WEAX SUPPORT WILL BE DONE BY THE MCMURDO STATION WEATHER OFFICE AND ISSUED BY 2100Z. SEE CONTACT INFO BELOW.

VALID TIME	8-May 21Z	9-May 06Z	9-May 12Z	9-May 18Z	10-May 00Z	10-May 06Z	10-May 12Z	10-May 18Z
SKY CONDITION	CLOUDY	CLOUDY	CLOUDY	MOSTLY CLOUDY	MOSTLY CLOUDY	CLOUDY	MOSTLY CLOUDY	CLOUDY
WEATHER	RAIN	RAIN & FOG	RAIN	NONE	NONE	NONE	NONE	NONE
VISIBILITY (NM)	4 - 6	1/2 - 1	2 - 4	4 - 6	UNRESTRICTED	UNRESTRICTED	UNRESTRICTED	UNRESTRICTED
SFC WINDS (DIR & KTS)	NNW 20-25 GUST 35	SW 20-25 GUST 35	SSW 15-20 GUST 30	SW 20-30 GUST 40	SW 15-25 GUST 35	W 10-15	W 4-8	VRB 5-10
SFC MAX/MIN (°C)	3 / 1				0 / -4			
SST RANGE (°C)	3 / 0				0 / -1			
SEAS (DIR & FT)	W 18-20	W 18-20	W 16-18	W 14-16	W 12-14	W/NW 8-10	NW 6-8	NW 2-4
ICE ACCRETION	NIL	LIGHT	NIL	NIL	NIL	NIL	NIL	NIL