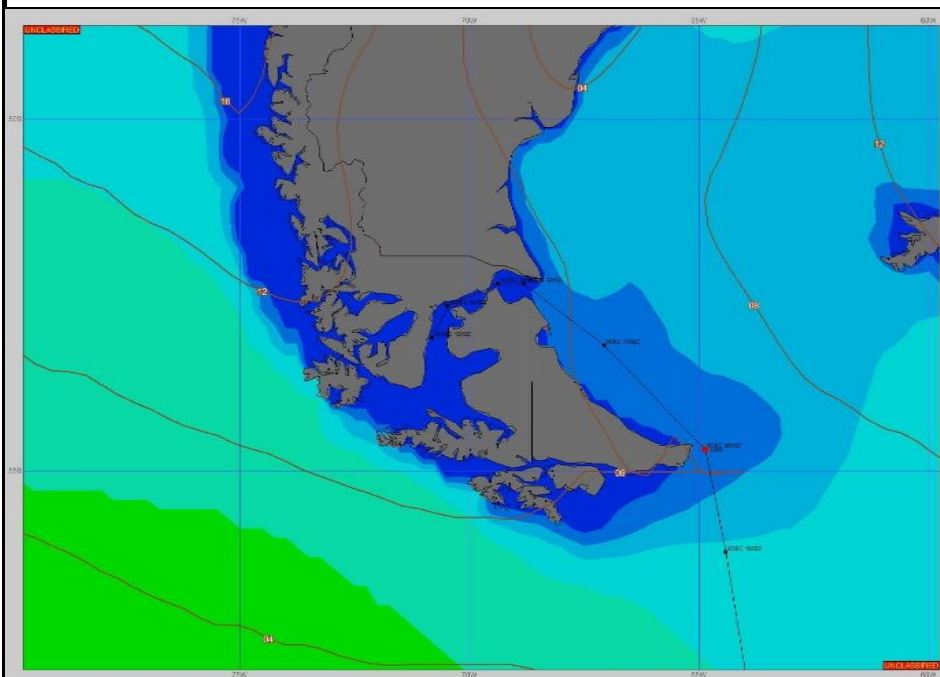


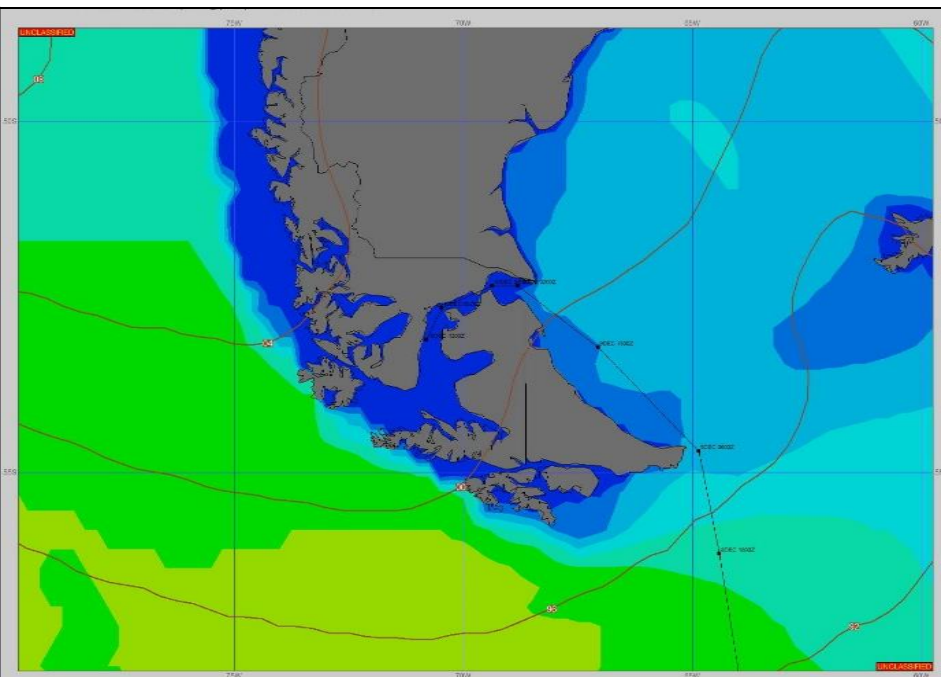
SURFACE ANALYSIS 9-Dec-2023 06Z



Seas (FT)



SURFACE FORECAST 10-Dec-2023 18Z



METSIT 06Z 9-Dec

A LOW PRESSURE SYSTEM IN THE BELLINGSHAUSEN SEA EXTENDS A TROUGH OVER THE DRAKE AND THE SOUTHERN TIP OF SOUTH AMERICA PRODUCING EXTENSIVE CLOUD COVER OVER YOUR TRANSIT. EXPECT FOG AN ISOLATED PERIODS OF LIGHT RAIN TODAY WITH A GENTLE BREEZE AND SLIGHT SEAS.

FORECASTER NOTES

This is my final forecast unless otherwise required. Timely observations received from your ship greatly appreciated. Outlook for arrival at your destination: Mostly cloudy skies with isolated morning rainshowers. Gusty winds out of the west at 15-25 gusting 30 knots. High temperature 12°C/54°F. Overnight low temperature 4°C/39°F.

VALID TIME	9-Dec 12Z	9-Dec 18z	10-Dec 00Z	10-Dec 06Z	10-Dec 12Z	10-Dec 18Z	11-Dec 00Z	11-Dec 06Z
SKY CONDITION	CLOUDY	CLOUDY	MOSTLY CLOUDY	CLOUDY				
WEATHER	FOG	FOG	RAIN	RAIN	IN PORT	IN PORT	IN PORT	IN PORT
VISIBILITY (NM)	1/2 - 1	1/2 - 1	4 - 6	4 - 6	PUNTA ARENAS	PUNTA ARENAS	PUNTA ARENAS	PUNTA ARENAS
SFC WINDS (DIR & KTS)	E 10-15	VRB 2-7	WSW10-15	VRB 2-7				
SFC MAX/MIN (°C)	6/4							
SST RANGE (°C)	6/3							
SEAS (DIR & FT)	SE 2-4	NE 1-3	W 1-3	W 0-2, , 1 IP				
ICE ACCRETION	NIL	NIL	NIL	NIL				