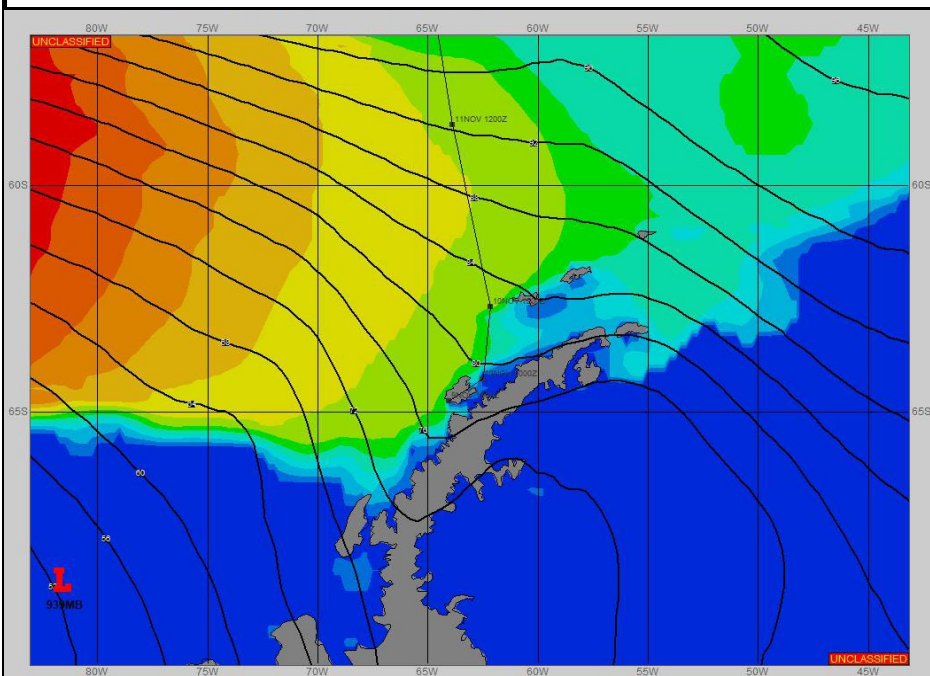


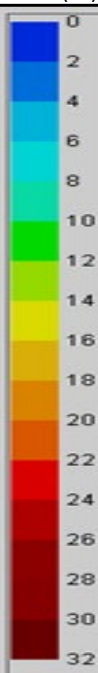
Ref A: LMG MOVREP 23-10 NB

Ref B:

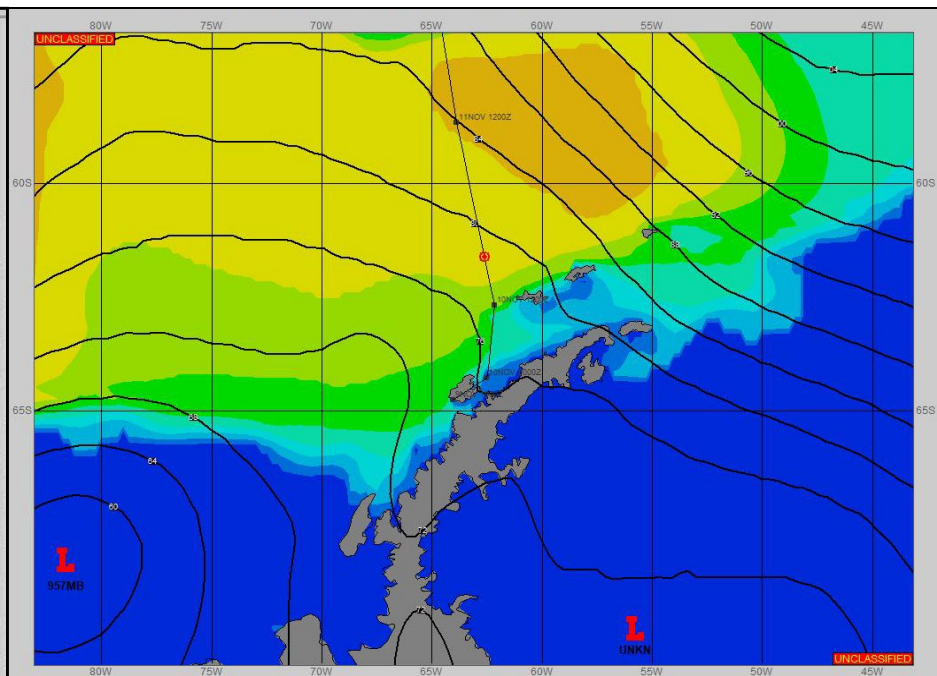
**SURFACE ANALYSIS 9-Nov-2023 06Z**



Seas (FT)



**SURFACE FORECAST 10-Nov-2023 18Z**



**METSIT 06Z 9-Nov** 939MB LOW NEAR 68S 093W AND SPANNING THE BELLINGSHAUSEN SEA CREATING A TIGHT NORTHWEST PRESSURE GRADIENT BETWEEN 65S AND 55S BRINGING HIGH WINDS AND INCLEMENT WEATHER TO THE ANTARCTIC PENINSULA. THIS LOW WILL FILL OVER THE FORECAST PERIOD MOVING EAST-SOUTHEAST AND EASING THE PRESSURE GRADIENT. EXPECT PERIODS OF REDUCED VISIBILITY IN MIXED PRECIPITATION AND FOG THROUGH 10/1500Z, AND IMPROVING CONDITIONS FROM 10/1800Z THROUGH THE END OF THE PERIOD.

**FORECASTER NOTES**

VALID TIME	9-Nov 18Z	10-Nov 00z	10-Nov 06Z	10-Nov 12Z	10-Nov 18Z	11-Nov 00Z	11-Nov 06Z	11-Nov 012Z
SKY CONDITION	CLOUDY	CLOUDY	CLOUDY	CLOUDY	MOSTLY CLOUDY	CLOUDY	CLOUDY	CLOUDY
WEATHER	MIXED & FOG	MIXED & FOG	MIXED & FOG	MIXED & FOG	NONE	NONE	NONE	NONE
VISIBILITY (NM)	1 - 3	1/2 - 1	2 - 4	2 - 4	UNRESTRICTED	UNRESTRICTED	UNRESTRICTED	UNRESTRICTED
SFC WINDS (DIR & KTS)	NW 20-30 GUST 40	NW 10-15	NW 15-20	NW 15-20	NW 20-25	NW 15-20	W 10-15	W 10-15
SFC MAX/MIN (°C)	0/-2				3/0			
SST RANGE (°C)	0/-1				0/-1			
SEAS (DIR & FT)	N 0-2	N 0-2	WNW 10-14	WNW 11-15	WNW 11-15	WNW 10-14	W 10-13	W 9-12
ICE ACCRETION	NIL	NIL	NIL	NIL	NIL	NIL	NIL	NIL