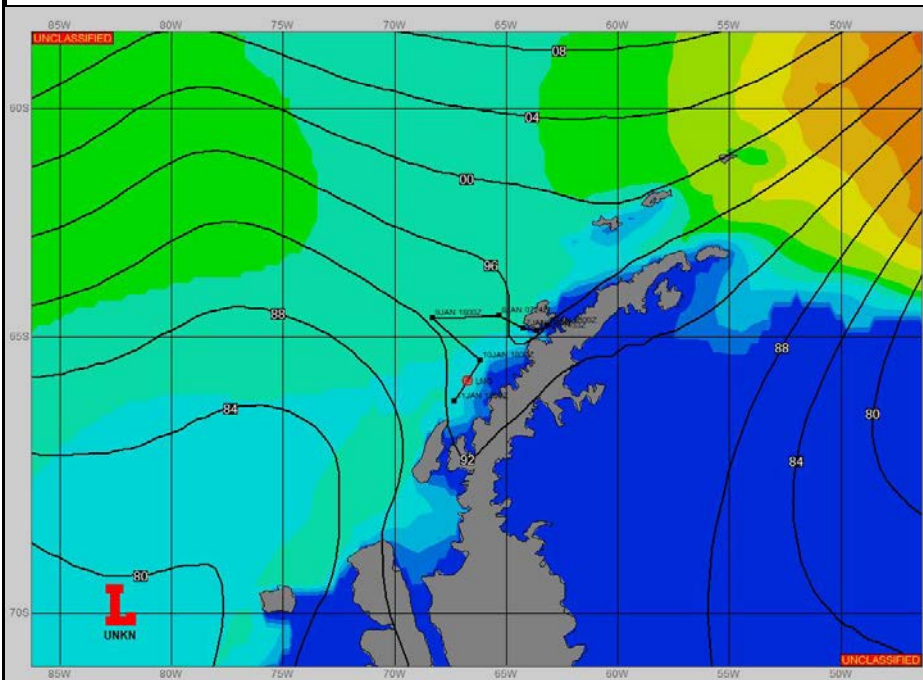


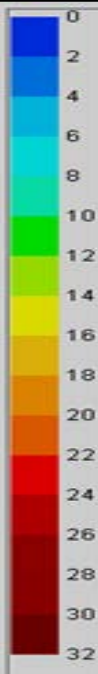
Ref A: SITREP 9 JAN 2023

Ref B:

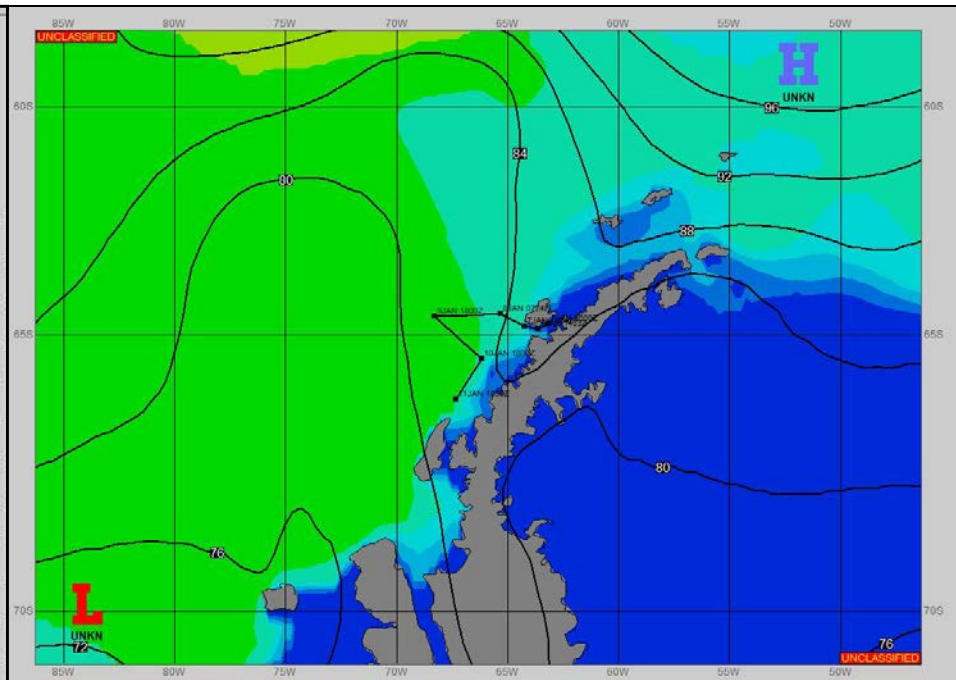
**SURFACE ANALYSIS 11-Jan-2023 06Z**



Seas (FT)



**SURFACE FORECAST 12-Jan-2023 18Z**



**METSIT 06Z 11-Jan** LOW PRESSURE MOVING INTO THE SOUTHERN BELLINGSHAUSEN SEA TO KEEP THE OPERATIONS AREA CLOUDY AND WINDY WITH EXTENDED PERIODS OF LOWER VISIBILITY IN PRECIPITATION AND FOG. A FRONTAL BOUNDARY WILL PUSH ACROSS THE AREA EARLY IN THE PERIOD. EXPECT WINDS GUSTING TO 25 KNOTS WITH VISIBILITY TO LESS THAN 1 MILE AT TIMES. A TRANSIENT RIDGE OF HIGH PRESSURE WILL EASE CONDITIONS FROM APPROXIMATELY 11/2100Z THROUGH 12/0300Z. FROM 12/0600Z THROUGH THE END OF THE FORECAST PERIOD, EXPECT WINDS GUSTING 25-30 KNOTS WITH REDUCED VISIBILITY IN PRECIPITATION AND FOG.

**FORECASTER NOTES** WINDS MAY DIFFER FROM THOSE FORECAST DUE TO FUNNELING/SHELTERING EFFECTS OF ISLANDS.

VALID TIME	11-Jan 12Z	11-Jan 18Z	12-Jan 00Z	12-Jan 06Z	12-Jan 12Z	12-Jan 18Z	13-Jan 00Z	13-Jan 06Z
SKY CONDITION	CLOUDY	CLOUDY	MOSTLY CLOUDY	CLOUDY	CLOUDY	CLOUDY	CLOUDY	CLOUDY
WEATHER	MIXED & FOG	MIXED & FOG	NONE	FOG	SNOW & FOG	MIXED & FOG	RAIN & FOG	RAIN & FOG
VISIBILITY (NM)	1/2 - 1	1/2 - 1	UNRESTRICTED	2 - 4	1 - 3	1/2 - 1	1 - 3	1 - 3
SFC WINDS (DIR & KTS)	NE 15-20 GUST 25	W 10-15	W 15-20	NW 15-20	NE 15-20 GUST 25	NE 15-20 GUST 30	NE 15-20	NW 5
SFC MAX/MIN (°C)	2/0			2/0				
SST RANGE (°C)	1/0			1/0				
SEAS (DIR & FT)	NW 6-8	NW 6-8	NW 6-8	NW 7-9	W 7-9	W 8-11	W 8-11	W 8-11
ICE ACCRETION	NIL	NIL	NIL	NIL	NIL	NIL	NIL	NIL