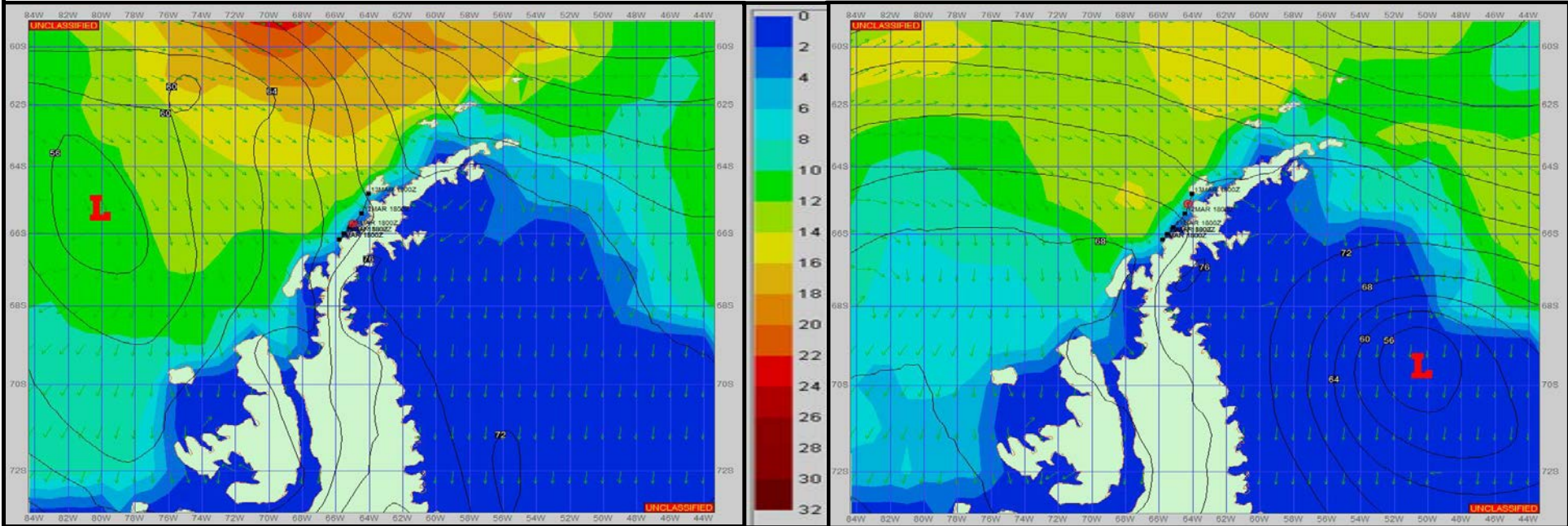


**SURFACE ANALYSIS 11-Mar-2023 21Z**

Seas (FT)

**SURFACE FORECAST 13-Mar-2023 06Z**



**METSIT 21Z 11-Mar** A low pressure system will transit from west to east and cross over the peninsula and into the Weddell Sea. Conditions won't change much during the period. Expect cloudy conditions with on and off snow showers throughout. Winds will remain high as well as sea states further out from land. Terrain induced conditions can still exist, especially closer in land. Winds may differ due to funneling/sheltering effects of the islands.

**FORECASTER NOTES** MCMURDO STATION WINTER OPERATIONS ARE NOW IN EFFECT. WEAX SUPPORT WILL BE DONE BY THE MCMURDO STATION WEATHER OFFICE AND ISSUED BY 2100Z. SEE CONTACT INFO BELOW.

VALID TIME	11-Mar 21Z	12-Mar 06Z	12-Mar 12Z	12-Mar 18Z	13-Mar 00Z	13-Mar 06Z	13-Mar 12Z	13-Mar 18Z
SKY CONDITION	CLOUDY	CLOUDY	CLOUDY	CLOUDY	CLOUDY	CLOUDY	CLOUDY	CLOUDY
WEATHER	SNOW & FOG	SNOW & FOG	SNOW & FOG	SNOW & FOG	SNOW & FOG	SNOW & FOG	SNOW & FOG	SNOW & FOG
VISIBILITY (NM)	1 - 3	1 - 3	1 - 3	1 - 3	1 - 3	1 - 3	1 - 3	1 - 3
SFC WINDS (DIR & KTS)	NE 25-35 GUST 45	NE 20-30 GUST 40	NNE 15-25 GUST 35	NW 10-20 GUST 30	NW 10-20 GUST 30	NW 10-20 GUST 30	NW 10-20	N 10-20
SFC MAX/MIN (°C)	1 / -1				2 / 0			
SST RANGE (°C)	1 / 0				1 / 0			
SEAS (DIR & FT)	NW 4-6	NW 4-6	NW 6-8	NW 6-8	NW 6-8	NW 6-8	NW 4-6	NW 4-6
ICE ACCRETION	LIGHT	LIGHT	LIGHT	LIGHT	LIGHT	LIGHT	LIGHT	LIGHT