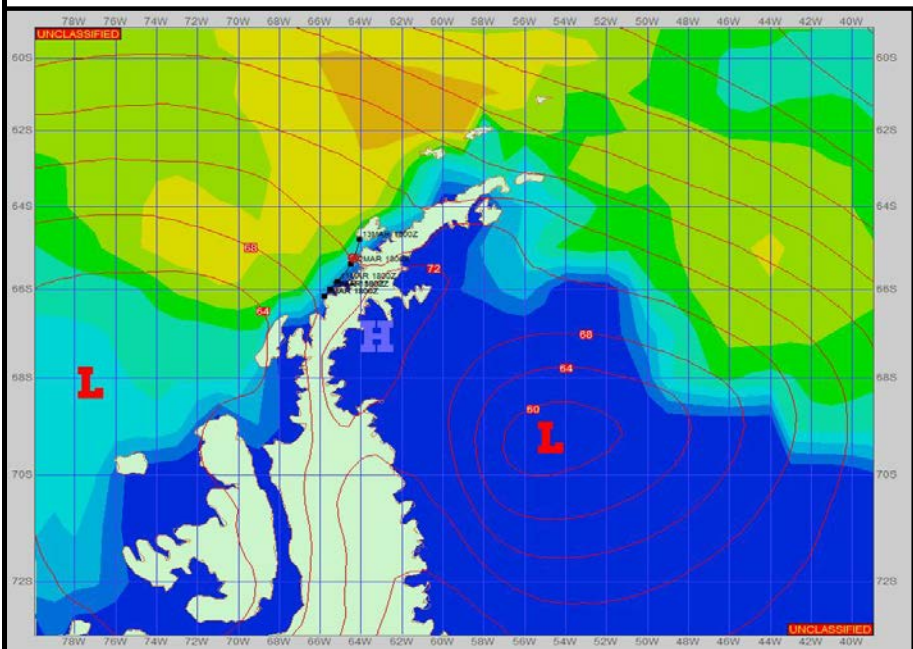
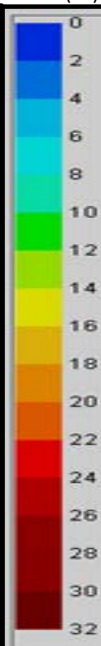


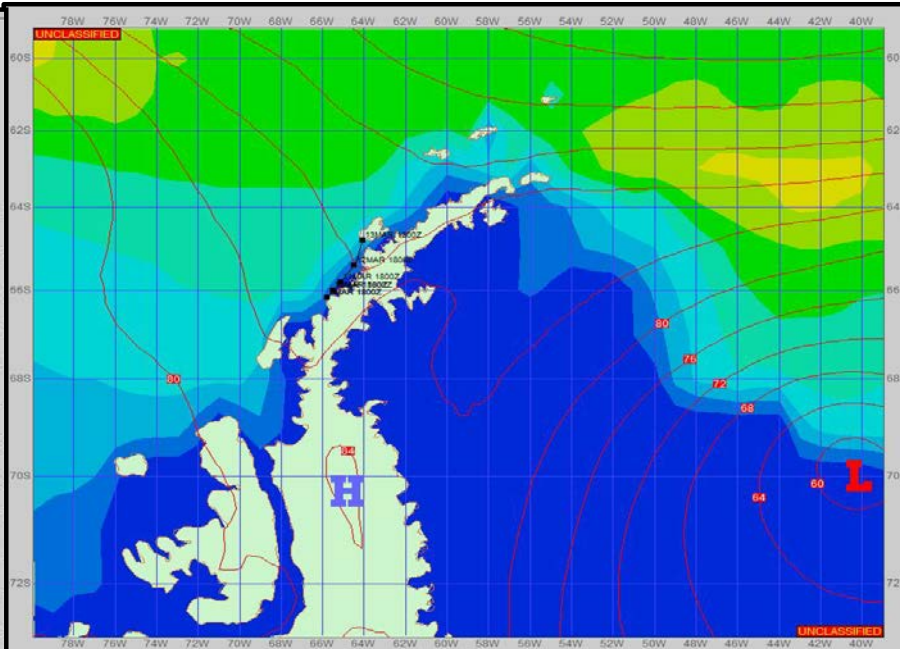
SURFACE ANALYSIS 12-Mar-2023 21Z



Seas (FT)



SURFACE FORECAST 14-Mar-2023 06Z



METSIT 21Z

12-Mar

Multiple pressure systems move into and through the area over the timeframe. Conditions won't change much during the period. Expect cloudy conditions with on and off snow showers throughout. Winds will remain high as well as sea states further out from land. Terrain induced conditions can still exist, especially closer in land. Winds may differ due to funneling/sheltering effects of the islands.

FORECASTER NOTES

MCMURDO STATION WINTER OPERATIONS ARE NOW IN EFFECT. WEAX SUPPORT WILL BE DONE BY THE MCMURDO STATION WEATHER OFFICE AND ISSUED BY 2100Z. SEE CONTACT INFO BELOW.

VALID TIME	12-Mar 21Z	13-Mar 06Z	13-Mar 12Z	13-Mar 18Z	14-Mar 00Z	14-Mar 06Z	14-Mar 12Z	14-Mar 18Z
SKY CONDITION	CLOUDY	CLOUDY	CLOUDY	CLOUDY	CLOUDY	MOSTLY CLOUDY	MOSTLY CLOUDY	MOSTLY CLOUDY
WEATHER	SNOW & FOG	SNOW & FOG	SNOW & FOG	SNOW & FOG	SNOW & FOG	SNOW & FOG	SNOW & FOG	NONE
VISIBILITY (NM)	1 - 3	1 - 3	1 - 3	1 - 3	1 - 3	2 - 4	2 - 4	2 - 4
SFC WINDS (DIR & KTS)	NW 15-25 GUST 35	NW 15-25 GUST 35	NW 10-20	NW 10-20	NW 10-20	N 10-15	NE 10-15	NE 10-20
SFC MAX/MIN (°C)	2 / 1				1 / -1			
SST RANGE (°C)	1 / 0				1 / 0			
SEAS (DIR & FT)	NW 6-8	NW 8-10	NW 8-10	NW 8-10	NW 8-10	NW 8-10	NW 6-8	NW 4-6
ICE ACCRETION	LIGHT	LIGHT	LIGHT	LIGHT	LIGHT	LIGHT	LIGHT	LIGHT