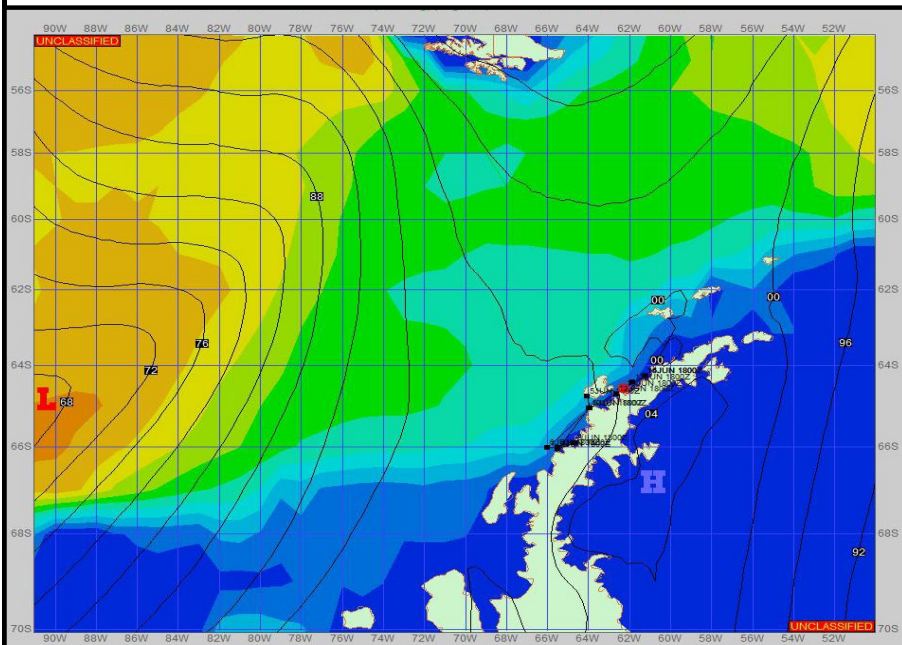
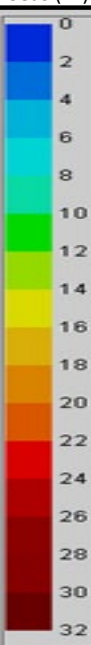


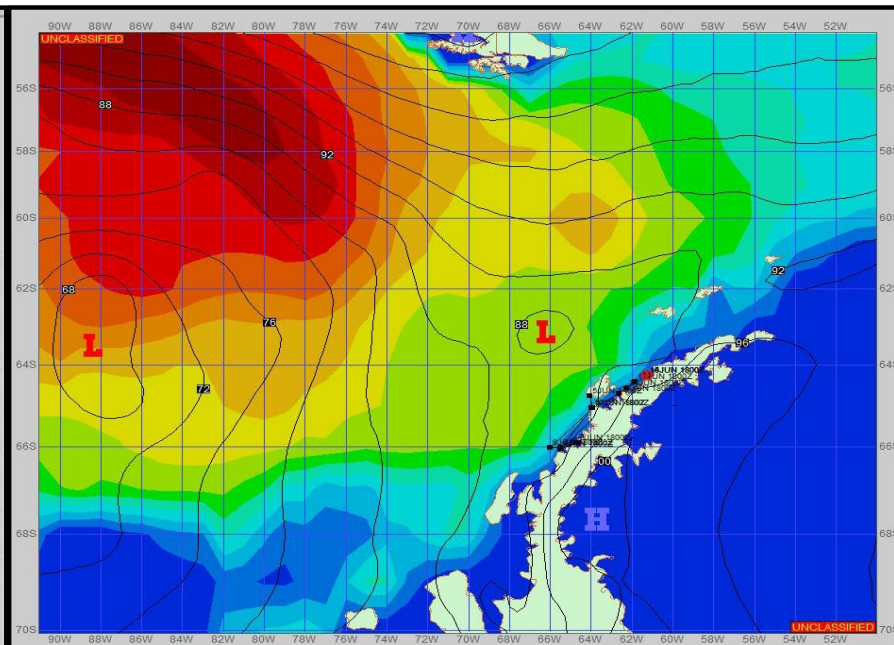
**SURFACE ANALYSIS 13-Jun-2023 18Z**



Seas (FT)



**SURFACE FORECAST 15-Jun-2023 06Z**



**METSIT 21Z**

**13-Jun**

A large broad area of low pressure sits out west of the peninsula through much of the forecast period. This will result in some moderate to strong winds with a timeframe of precipitation moving through with periods of low visibility. Winds may differ from those forecast due to funneling/sheltering effects of islands.

**FORECASTER NOTES**

MCMURDO STATION WINTER OPERATIONS ARE IN EFFECT. WEAX SUPPORT WILL BE DONE BY THE MCMURDO STATION WEATHER OFFICE AND ISSUED BY 2100Z. SEE CONTACT INFO BELOW.

VALID TIME	13-Jun 21Z	14-Jun 06Z	14-Jun 12Z	14-Jun 18Z	15-Jun 00Z	15-Jun 06Z	15-Jun 12Z	15-Jun 18Z
SKY CONDITION	PARTLY CLOUDY	MOSTLY CLOUDY	CLOUDY	CLOUDY	CLOUDY	CLOUDY	CLOUDY	CLOUDY
WEATHER	NONE	NONE	NONE	SNOW	SNOW & FOG	SNOW & FOG	SNOW	NONE
VISIBILITY (NM)	UNRESTRICTED	UNRESTRICTED	4 - 6	2 - 4	1 - 3	1 - 3	2 - 4	3 - 5
SFC WINDS (DIR & KTS)	SW 10-15 GUST 20	SW 10-15 GUST 25	SW 15-20 GUST 30	WNW 20-25 GUST 30	NW 25-30 GUST 40	NW 15-20 GUST 30	NW 15-20	NW 15-20
SFC MAX/MIN (°C)	-3 / -6				-3 / -7			
SST RANGE (°C)	-1 / -2				-1 / -2			
SEAS (DIR & FT)	SW 0-2	SW 0-2	SW 0-2	SW 0-2	SW 0-2	NW 0-2	NW 0-2	NW 0-2
ICE ACCRETION	LIGHT	LIGHT	LIGHT	LIGHT	MODERATE	MODERATE	LIGHT	LIGHT