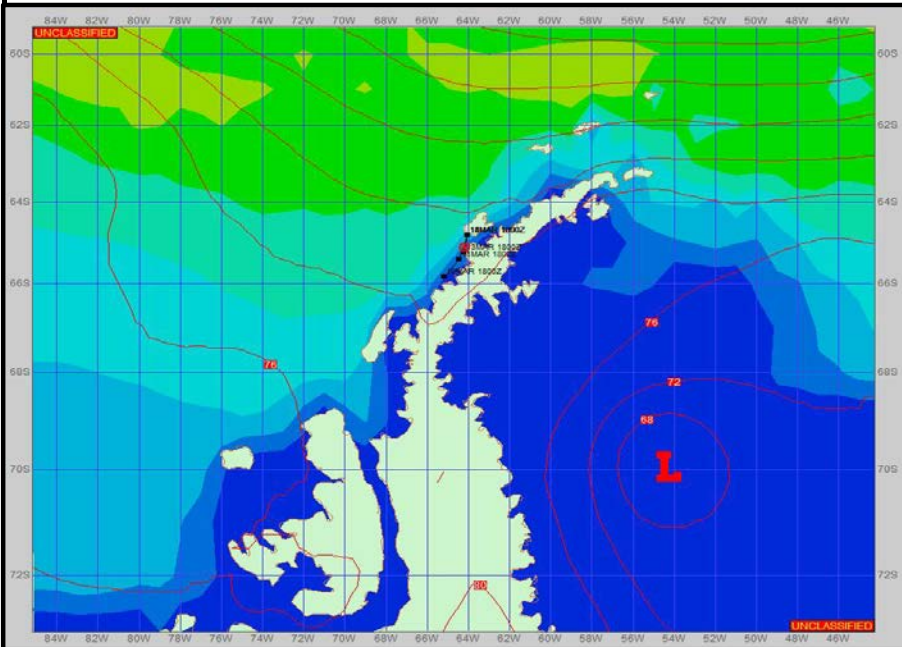
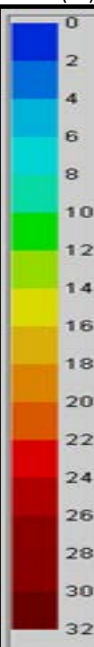


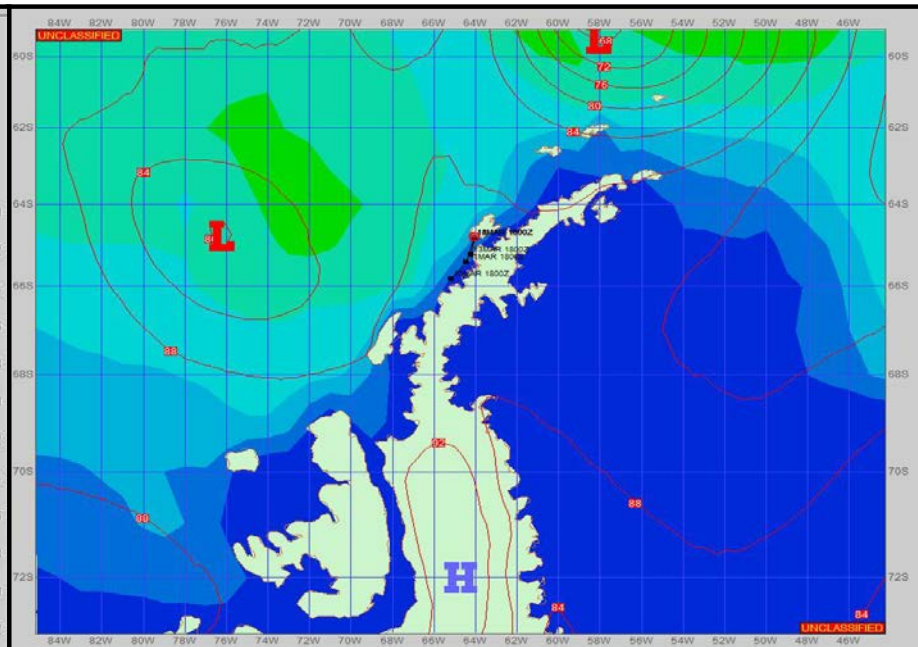
SURFACE ANALYSIS 13-Mar-2023 21Z



Seas (FT)



SURFACE FORECAST 15-Mar-2023 06Z



METSIT 21Z

13-Mar

Multiple weak pressure systems move through the area over the timeframe. Initial conditions won't change much during the first half of the forecast period, with cloudy conditions with on and off snow showers continuing. In the latter part of the forecast, precipitation ends as well as some breaks in the clouds. Winds will slowly decrease throughout the period down to light and variable. However, terrain induced conditions can still exist, especially closer in land. Winds may differ due to funneling/sheltering effects of the islands.

FORECASTER NOTES

MCMURDO STATION WINTER OPERATIONS ARE NOW IN EFFECT. WEAX SUPPORT WILL BE DONE BY THE MCMURDO STATION WEATHER OFFICE AND ISSUED BY 2100Z. SEE CONTACT INFO BELOW.

VALID TIME	13-Mar 21Z	14-Mar 06Z	14-Mar 12Z	14-Mar 18Z	15-Mar 00Z	15-Mar 06Z	15-Mar 12Z	15-Mar 18Z
SKY CONDITION	CLOUDY	CLOUDY	CLOUDY	CLOUDY	CLOUDY	MOSTLY CLOUDY	MOSTLY CLOUDY	MOSTLY CLOUDY
WEATHER	SNOW & FOG	SNOW & FOG	SNOW & FOG	SNOW & FOG	SNOW & FOG	NONE	NONE	NONE
VISIBILITY (NM)	1 - 3	1 - 3	1 - 3	1 - 3	1 - 3	2 - 4	4 - 6	3 - 5
SFC WINDS (DIR & KTS)	E 15-25 GUST 35	NW 15-25 GUST 35	NE 10-20	NE 10-15	NE 8-12	NE 5-10	VRB 5-10	VRB 5-10
SFC MAX/MIN (°C)	0 / -1				0 / -1			
SST RANGE (°C)	1 / 0				1 / 1			
SEAS (DIR & FT)	NW 6-8	NW 6-8	NW 4-6	NW 4-6	NW 4-6	NW 2-4	NW 2-4	NW 2-4
ICE ACCRETION	LIGHT	LIGHT	LIGHT	LIGHT	LIGHT	LIGHT	LIGHT	LIGHT