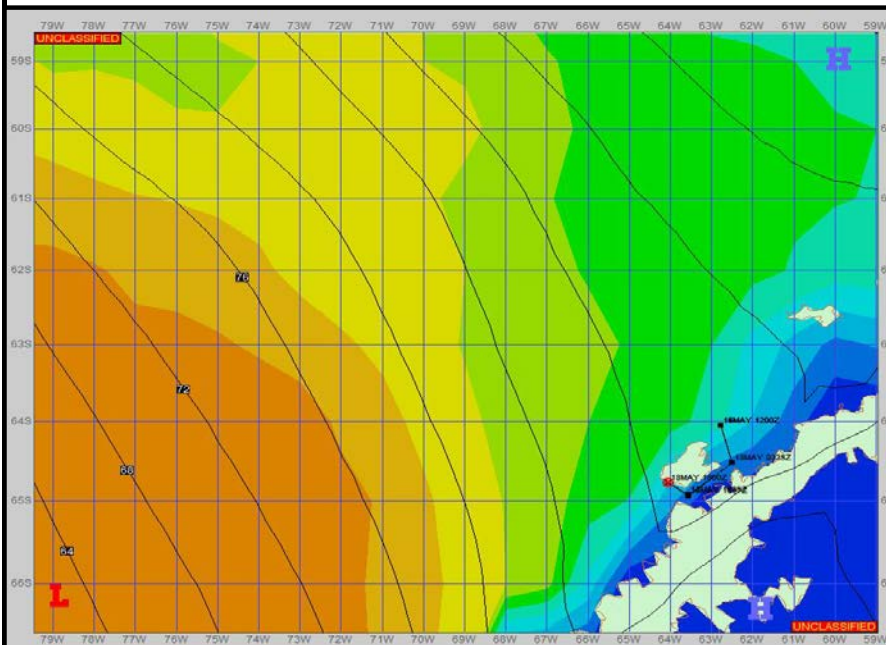


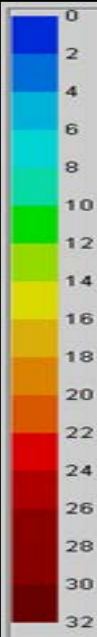
Ref A: MOVE REP 23-05 Fishing Dallmann Bay

Ref B:

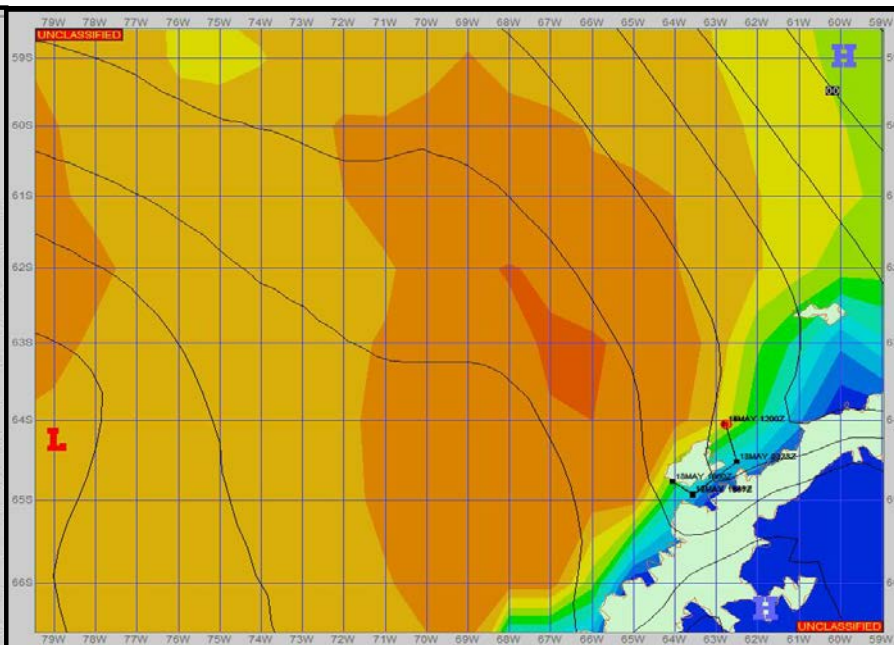
SURFACE ANALYSIS 13-May-2023 18Z



Seas (FT)



SURFACE FORECAST 15-May-2023 06Z



METSIT 21Z 13-May A deep low pressure remains fairly steady in the Bellingshausen Sea through most of the forecast period. This all results in mostly steady and gusty northeast winds with snow and reduced visibilities. A bubble of higher seas will pass through the Dallmann Bay area starting around the 15/02z timeframe and slowly decreasing after peaking. Winds may differ from those forecast due to funneling/sheltering effects of islands.

FORECASTER NOTES MCMURDO STATION WINTER OPERATIONS ARE IN EFFECT. WEAX SUPPORT WILL BE DONE BY THE MCMURDO STATION WEATHER OFFICE AND ISSUED BY 2100Z. SEE CONTACT INFO BELOW.

VALID TIME	13-May 21Z	14-May 06Z	14-May 12Z	14-May 18Z	15-May 00Z	15-May 06Z	15-May 12Z	15-May 18Z
SKY CONDITION	CLOUDY	CLOUDY	CLOUDY	CLOUDY	CLOUDY	CLOUDY	CLOUDY	CLOUDY
WEATHER	SNOW & FOG	SNOW & FOG	SNOW & FOG	SNOW	SNOW & FOG	SNOW & FOG	SNOW & FOG	SNOW & FOG
VISIBILITY (NM)	4 - 6	1 - 3	1 - 3	2 - 4	1 - 3	1/2 - 1	1 - 3	2 - 4
SFC WINDS (DIR & KTS)	NE 10-15 GUST 20	ENE 10-15 GUST 20	NE 10-15 GUST 20	NE 10-15 GUST 25	NE 10-15 GUST 20	NE 20-25 GUST 35	NNE 10-15 GUST 20	VRB 5-10
SFC MAX/MIN (°C)	2 / -2				0 / -1			
SST RANGE (°C)	0 / -1				0 / -1			
SEAS (DIR & FT)	NW 2-4	W 6-8	W 6-8	W 6-8	W 6-8	W 12-14	W 10-12	W 8-10
ICE ACCRETION	LIGHT	LIGHT	LIGHT	MODERATE	LIGHT	MODERATE	LIGHT	LIGHT