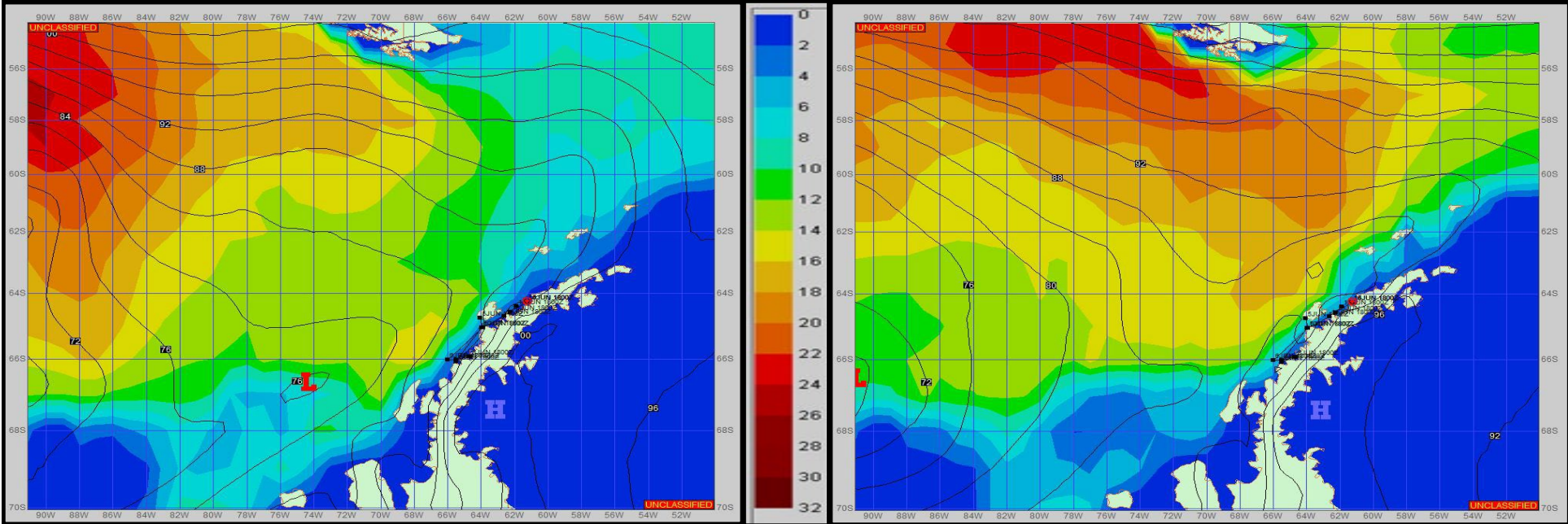


**SURFACE ANALYSIS 14-Jun-2023 18Z**

Seas (FT)

**SURFACE FORECAST 16-Jun-2023 06Z**



**METSIT 21Z 14-Jun** A large broad area of low pressure continues to spin out west of the peninsula through the forecast period. This will result in some moderate to strong winds with a timeframes of precipitation moving through with periods of low visibility. Winds may differ from those forecast due to funneling/sheltering effects of islands.

**FORECASTER NOTES** MCMURDO STATION WINTER OPERATIONS ARE IN EFFECT. WEAX SUPPORT WILL BE DONE BY THE MCMURDO STATION WEATHER OFFICE AND ISSUED BY 2100Z. SEE CONTACT INFO BELOW.

VALID TIME	14-Jun 21Z	15-Jun 06Z	15-Jun 12Z	15-Jun 18Z	16-Jun 00Z	16-Jun 06Z	16-Jun 12Z	16-Jun 18Z
SKY CONDITION	CLOUDY	CLOUDY	CLOUDY	CLOUDY	CLOUDY	CLOUDY	CLOUDY	CLOUDY
WEATHER	SNOW & FOG	SNOW & FOG	SNOW	NONE	NONE	SNOW	SNOW & FOG	SNOW
VISIBILITY (NM)	1/2 - 1	1 - 3	1 - 3	3 - 5	4 - 6	2 - 4	1 - 3	2 - 4
SFC WINDS (DIR & KTS)	NW 10-15 GUST 30	NW 10-15 GUST 25	NW 10-15	W 10-15	W 15-20	NW 15-20 GUST 30	NW 15-20 GUST 25	NW 5-10
SFC MAX/MIN (°C)	-3 / -6				-2 / -4			
SST RANGE (°C)	-1 / -2				-1 / -2			
SEAS (DIR & FT)	W 0-2	WNW 0-2	NW 0-2	NW 0-2	NW 0-2	NW 0-2	NW 0-2	NW 0-2
ICE ACCRETION	MODERATE	MODERATE	LIGHT	LIGHT	LIGHT	MODERATE	MODERATE	LIGHT