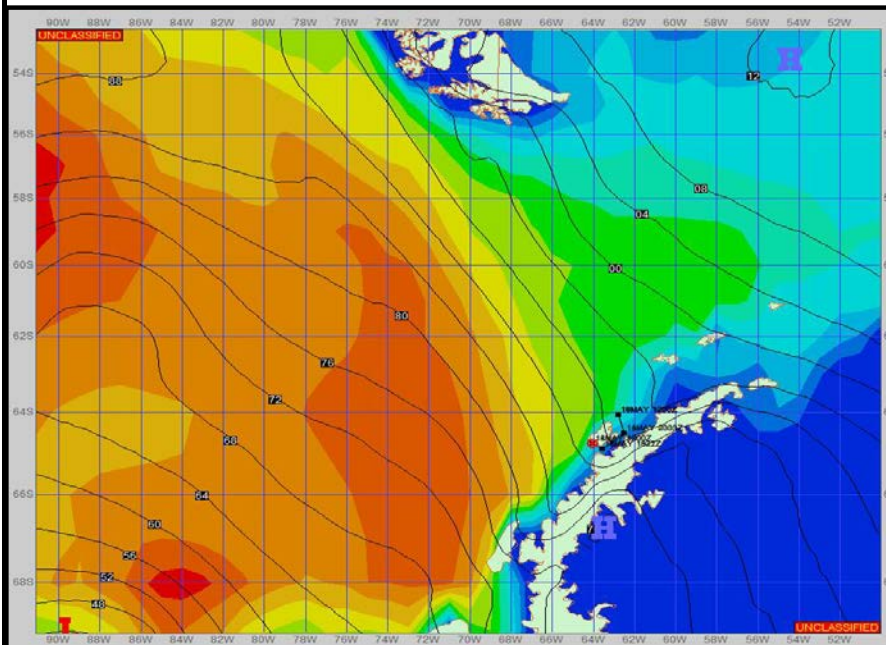


Ref A: MOVE REP 23-05 Fishing Dallmann Bay

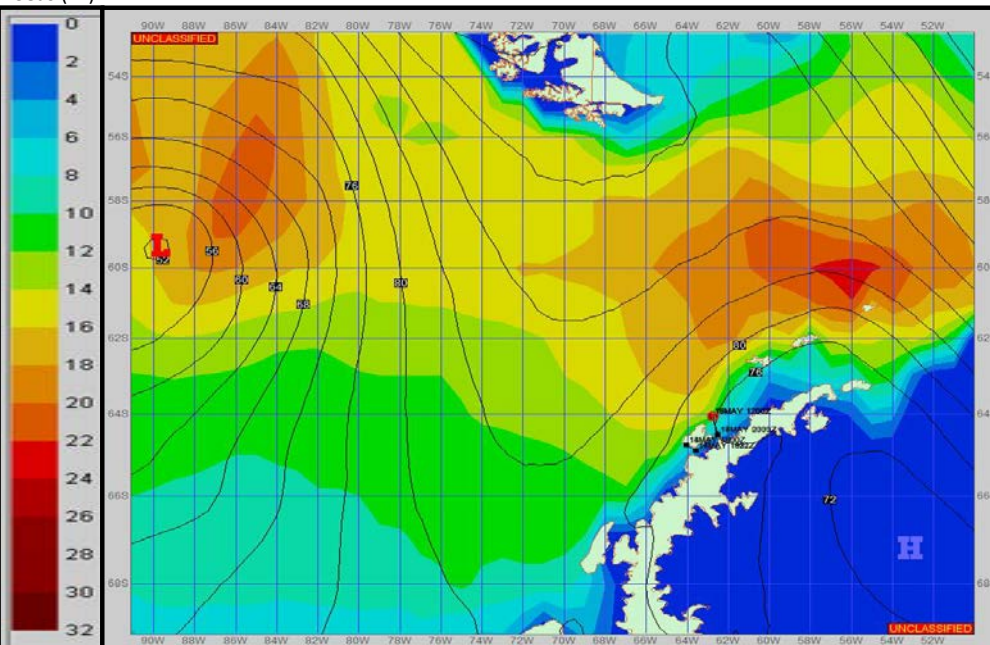
Ref B:

**SURFACE ANALYSIS 14-May-2023 18Z**



Seas (FT)

**SURFACE FORECAST 16-May-2023 06Z**



**METSIT 21Z 14-May** A deep low pressure remains fairly steady in the Bellingshausen Sea and will weaken over time. However a new low pressure system moves in from the west. In between those two lows, a smaller, weaker low develops just north of Anvers Island, moving over Dallmann Bay, resulting in a windshift. Precipitation and reduced visibilities will continue through much of the period due to the unstable weather pattern. A bubble of higher seas will pass through the Dallmann Bay area and slowly decrease after peaking. Winds may differ from those forecast due to funneling/sheltering effects of islands.

**FORECASTER NOTES** MCMURDO STATION WINTER OPERATIONS ARE IN EFFECT. WEAX SUPPORT WILL BE DONE BY THE MCMURDO STATION WEATHER OFFICE AND ISSUED BY 2100Z. SEE CONTACT INFO BELOW.

VALID TIME	14-May 21Z	15-May 06Z	15-May 12Z	15-May 18Z	16-May 00Z	16-May 06Z	16-May 12Z	16-May 18Z
SKY CONDITION	CLOUDY	CLOUDY	CLOUDY	CLOUDY	CLOUDY	CLOUDY	MOSTLY CLOUDY	MOSTLY CLOUDY
WEATHER	SNOW & FOG	SNOW & FOG	SNOW & FOG	SNOW & FOG	SNOW & FOG	SNOW & FOG	SNOW & FOG	NONE
VISIBILITY (NM)	1 - 3	1 - 3	1 - 3	1 - 3	1 - 3	1 - 3	2 - 4	3 - 5
SFC WINDS (DIR & KTS)	NE 25-35 GUST 45	N 15-20 GUST 25	N 10-15 GUST 20	NNE 10-15 GUST 25	VRB 10-15	SW 20-25 GUST 35	SW 20-25 GUST 35	SW 10-15
SFC MAX/MIN (°C)	3 / -2				0 / -2			
SST RANGE (°C)	0 / -1				0 / -1			
SEAS (DIR & FT)	W 6-8	W 8-10	W 10-12	W 8-10	W 8-10	W 8-10	W 8-10	W 6-8
ICE ACCRETION	MODERATE	MODERATE	MODERATE	MODERATE	LIGHT	MODERATE	MODERATE	LIGHT