

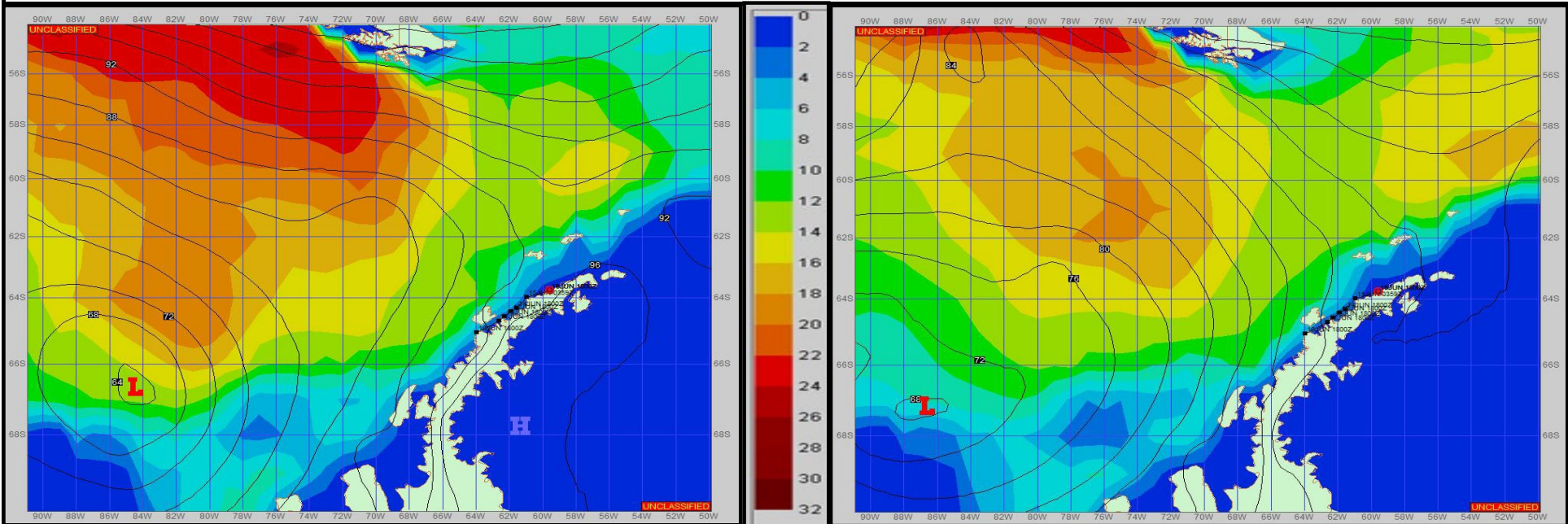
Ref A: MOVE REP 23-05 Sealing

Ref B: 14 June 2023 SITREP

SURFACE ANALYSIS 15-Jun-2023 18Z

Seas (FT)

SURFACE FORECAST 17-Jun-2023 06Z



METSIT 21Z 15-Jun The large broad area of low pressure continues to spin out west of the peninsula through the forecast period. The moderate winds decrease through the forecast period as does precipitation. At the end of the period a trough pushes through with a bit of precipitation and a slight increase in winds. Winds may differ from those forecast due to funneling/sheltering effects of islands.

FORECASTER NOTES MCMURDO STATION WINTER OPERATIONS ARE IN EFFECT. WEAX SUPPORT WILL BE DONE BY THE MCMURDO STATION WEATHER OFFICE AND ISSUED BY 2100Z. SEE CONTACT INFO BELOW.

VALID TIME	15-Jun 21Z	16-Jun 06Z	16-Jun 12Z	16-Jun 18Z	17-Jun 00Z	17-Jun 06Z	17-Jun 12Z	17-Jun 18Z
SKY CONDITION	CLOUDY	CLOUDY	CLOUDY	CLOUDY	CLOUDY	CLOUDY	CLOUDY	CLOUDY
WEATHER	SNOW	SNOW & FOG	SNOW & FOG	NONE	NONE	NONE	NONE	SNOW
VISIBILITY (NM)	1 - 3	1/2 - 1	1/2 - 1	UNRESTRICTED	UNRESTRICTED	UNRESTRICTED	4 - 6	2 - 4
SFC WINDS (DIR & KTS)	W 15-20	W 15-20 GUST 25	WNW 15-20	W 5-10	VRB 0-5	VRB 0-5	W 10-15	W 10-15
SFC MAX/MIN (°C)	-2 / -4			-3 / -5				
SST RANGE (°C)	-1 / -2			-1 / -2				
SEAS (DIR & FT)	W 0-2	NW 0-2	W 0-2	WNW 0-2	NW 0-2	W 0-2	NW 0-2	NW 0-2
ICE ACCRETION	LIGHT	MODERATE	LIGHT	LIGHT	LIGHT	LIGHT	LIGHT	LIGHT