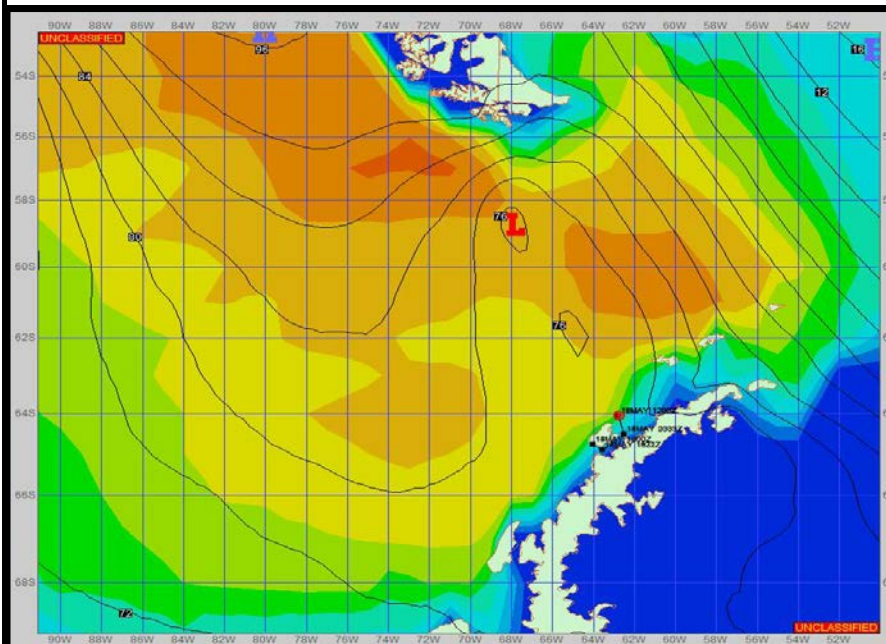


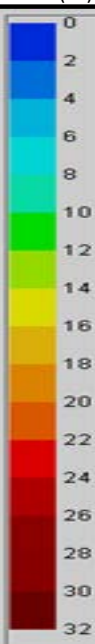
Ref A: MOVE REP 23-05 Fishing Dallmann Bay

Ref B:

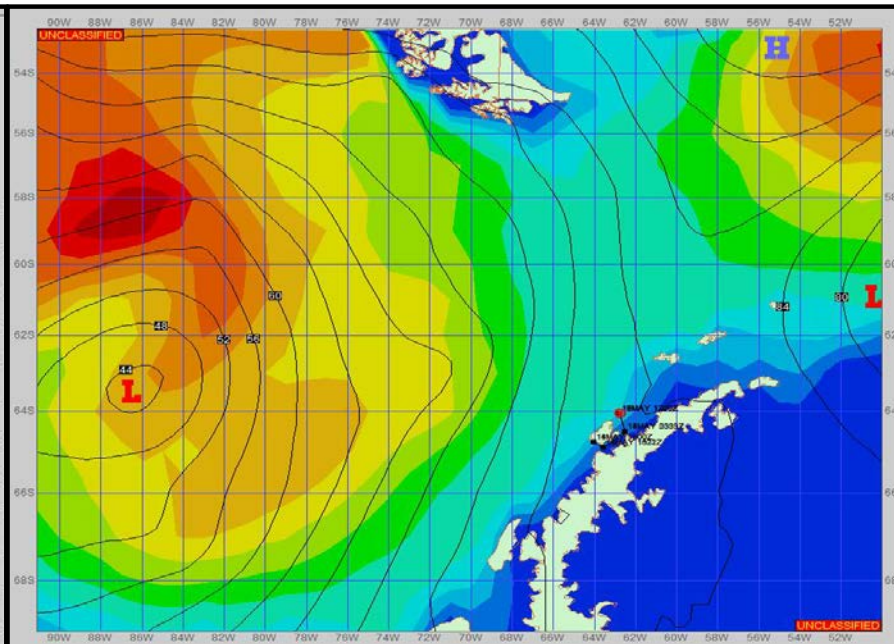
**SURFACE ANALYSIS 15-May-2023 18Z**



Seas (FT)



**SURFACE FORECAST 17-May-2023 06Z**



**METSIT 21Z 15-May** A low pressure and associated trough moves just north of Anvers Island, and Dallmann Bay, results in a period of strong gusty winds and a windshift. Precipitation continues until the trough passes. A period of ~24hrs, the winds decrease and precipitation ends. The next weather system starts moving in at the end of the forecast period. Sea states decreases slightly through the period. Winds pickup and precipitation starts once again. Winds may differ from those forecast due to funneling/sheltering effects of islands.

**FORECASTER NOTES** MCMURDO STATION WINTER OPERATIONS ARE IN EFFECT. WEAX SUPPORT WILL BE DONE BY THE MCMURDO STATION WEATHER OFFICE AND ISSUED BY 2100Z. SEE CONTACT INFO BELOW.

VALID TIME	15-May 21Z	16-May 06Z	16-May 12Z	16-May 18Z	17-May 00Z	17-May 06Z	17-May 12Z	17-May 18Z
SKY CONDITION	CLOUDY	CLOUDY	MOSTLY CLOUDY	MOSTLY CLOUDY	CLOUDY	CLOUDY	CLOUDY	CLOUDY
WEATHER	SNOW & FOG	SNOW & FOG	SNOW & FOG	NONE	NONE	NONE	NONE	MIXED & FOG
VISIBILITY (NM)	1 - 3	1 - 3	2 - 4	4 - 6	4 - 6	3 - 5	3 - 5	3 - 5
SFC WINDS (DIR & KTS)	N 10-15	NE 20-25 GUST 35	NE 20-25 GUST 30	NE 10-15	VRB 5-10	WSW 10-15 GUST 20	SW 20-25	SW 30-35 GUST 45
SFC MAX/MIN (°C)	0 / -2				-1 / -2			
SST RANGE (°C)	0 / -1				0 / -1			
SEAS (DIR & FT)	W 10-12	W 8-10	W 8-10	W 8-10	NW 6-8	NW 6-8	NW 4-6	NW 4-6
ICE ACCRETION	MODERATE	MODERATE	MODERATE	LIGHT	LIGHT	LIGHT	LIGHT	MODERATE