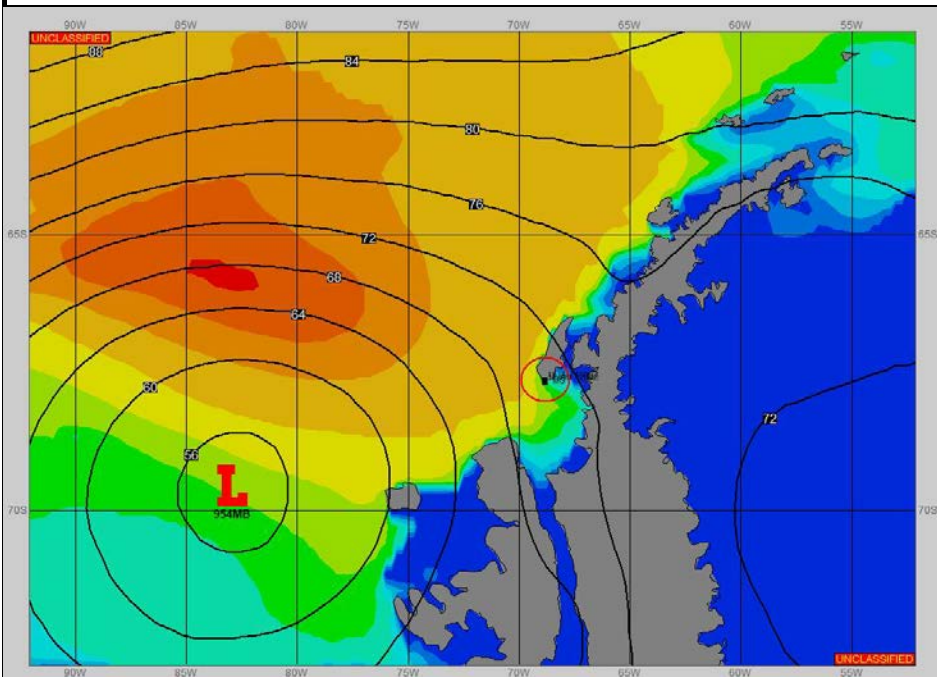
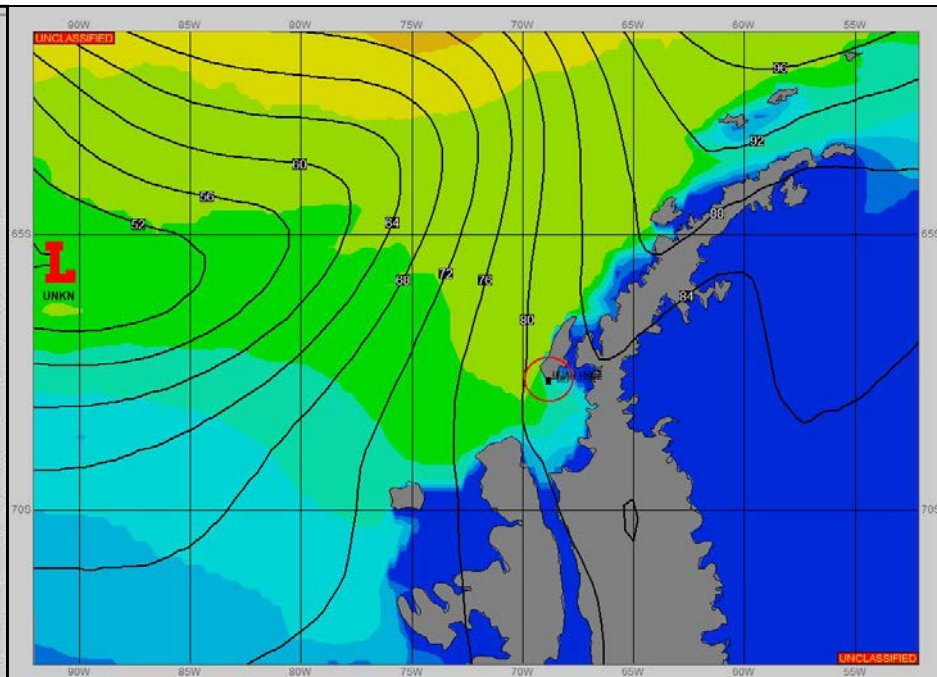


SURFACE ANALYSIS 16-Jan-2023 06Z



Seas (FT)

SURFACE FORECAST 17-Jan-2023 18Z



METSIT 06Z 16-Jan 954MB LOW NEAR 65.5S 083W CONTINUES SLOW TREK EAST-SOUTHEAST TOWARDS ALEXANDER ISLAND AND FILLING. EXPECT VARIED VISIBILITY IN MIXED PRECIPITATION AND FOG THROUGH 17/0600Z. EXPECT SOME IMPROVEMENT IN CONDITIONS FROM 17/0900Z THROUGH APPROXIMATELY 17/2100Z AS A TRANSIENT RIDGE OF HIGH PRESSURE SLIDES EAST ACROSS THE AREA. WIND SPEEDS INCREASE AGAIN FROM 17/1800Z AS THE RIDGE AXIS PASSES AND THE NEXT FRONTAL BOUNDARY OFF LOW PRESSURE ENTERING THE BELLINGSHAUSEN SEA APPROACHES.

FORECASTER NOTES WINDS MAY DIFFER FROM THOSE FORECAST DUE TO FUNNELING/SHELTERING EFFECTS OF ISLANDS. FORECAST IS FOR EXTREME WEST OF 25NM MODLOC CIRCLE NEAR 70W FOR OPEN WATER, NON-SHELTERED CONDITIONS.

VALID TIME	16-Jan 12Z	16-Jan 18Z	17-Jan 00Z	17-Jan 06Z	17-Jan 12Z	17-Jan 18Z	18-Jan 00Z	18-Jan 06Z
SKY CONDITION	CLOUDY	CLOUDY	CLOUDY	CLOUDY	CLOUDY	CLOUDY	CLOUDY	CLOUDY
WEATHER	MIXED & FOG	MIXED & FOG	MIXED & FOG	MIXED & FOG	NONE	NONE	NONE	MIXED & FOG
VISIBILITY (NM)	3 - 5	1/2 - 1	4 - 6	1 - 3	UNRESTRICTED	UNRESTRICTED	UNRESTRICTED	1 - 3
SFC WINDS (DIR & KTS)	NW 20-25 GUST 30	NW-N 20-25 GUST 35	NW 15-20 GUST 25	NW 20-25	NW 15-20	N-NE 20-25 GUST 35	NE-E 15-20 GUST 30	NW-N 20-25 GUST 35
SFC MAX/MIN (°C)	2/-1				3/-1			
SST RANGE (°C)	1/0				1/0			
SEAS (DIR & FT)	NW 12-16	NW 12-16	NW 11-15	NW 10-14	NW 10-14	NW 9-12	NW 9-12	NW 9-12
ICE ACCRETION	NIL	NIL	NIL	NIL	NIL	NIL	NIL	NIL