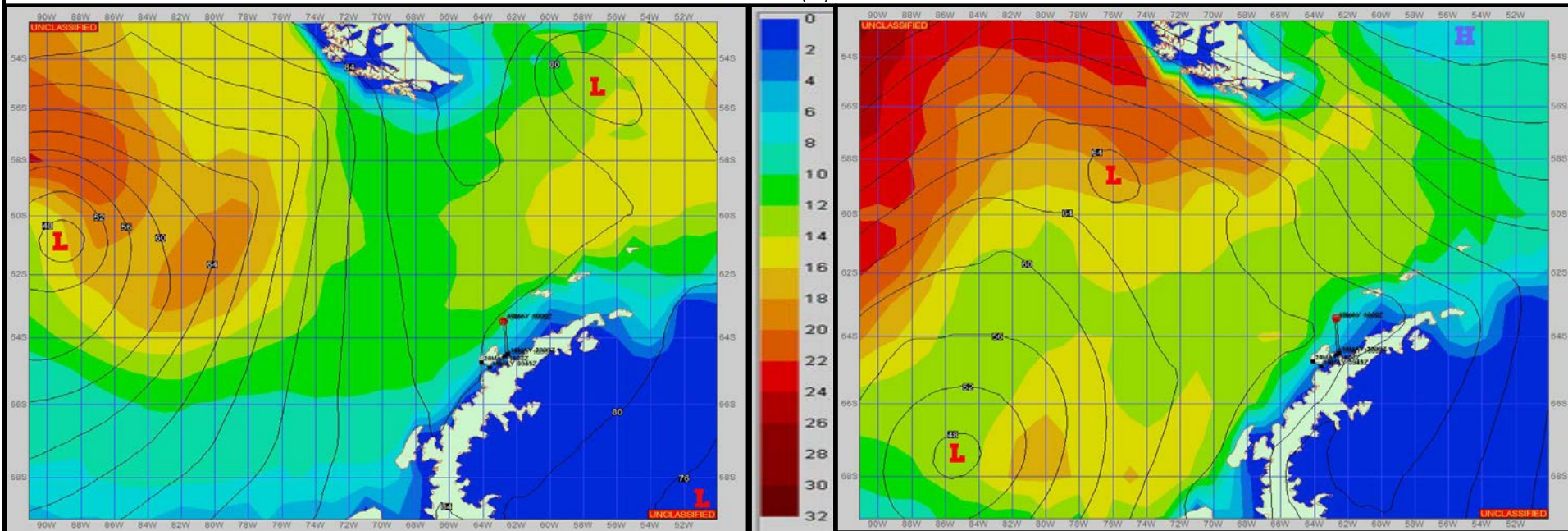


**SURFACE ANALYSIS 16-May-2023 18Z**

Seas (FT)

**SURFACE FORECAST 18-May-2023 06Z**



**METSIT 21Z 16-May** The low pressure on the SFC analysis drifts to the southeast as depicted on the SFC forecast. Conditions will vary through most of the period. From light/moderate winds to strong gusty winds. On/off precipitation in the latter part of the period. Seas states will be higher out in the open waters vs the area between the islands. Winds may differ from those forecast due to funneling/sheltering effects of islands.

**FORECASTER NOTES** MCMURDO STATION WINTER OPERATIONS ARE IN EFFECT. WEAX SUPPORT WILL BE DONE BY THE MCMURDO STATION WEATHER OFFICE AND ISSUED BY 2100Z. SEE CONTACT INFO BELOW.

VALID TIME	16-May 21Z	17-May 06Z	17-May 12Z	17-May 18Z	18-May 00Z	18-May 06Z	18-May 12Z	18-May 18Z
SKY CONDITION	MOSTLY CLOUDY	CLOUDY	MOSTLY CLOUDY	MOSTLY CLOUDY	CLOUDY	CLOUDY	CLOUDY	CLOUDY
WEATHER	NONE	NONE	NONE	MIXED & FOG	MIXED & FOG	SNOW & FOG	SNOW & FOG	SNOW & FOG
VISIBILITY (NM)	3 - 5	3 - 5	2 - 4	1 - 3	1 - 3	2 - 4	2 - 4	2 - 4
SFC WINDS (DIR & KTS)	NE 10-15	S 10-15	SW 20-25 GUST 35	SW 15-20 GUST 25	SW 15-20	W 15-20 GUST 25	WSW 15-20 GUST 25	SW 10-15
SFC MAX/MIN (°C)	-2 / -4				-3 / -4			
SST RANGE (°C)	1 / -1				1 / -1			
SEAS (DIR & FT)	NW 4-6	NW 4-6	NW 4-6	NW 0-2	NW 0-2	NW 0-2	NW 0-2	NW 0-2
ICE ACCRETION	LIGHT	LIGHT	MODERATE	LIGHT	LIGHT	MODERATE	MODERATE	LIGHT