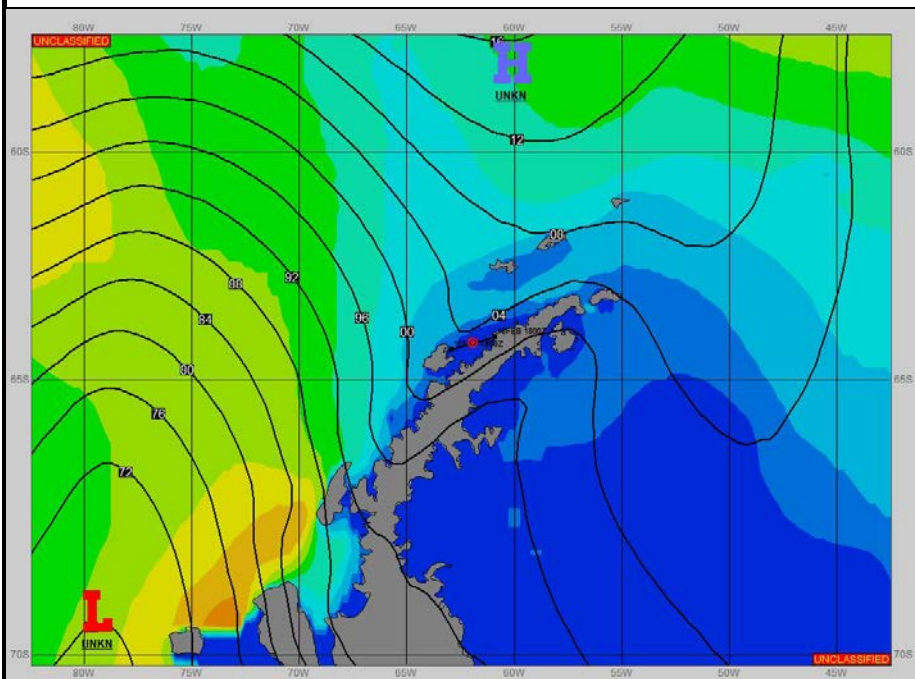
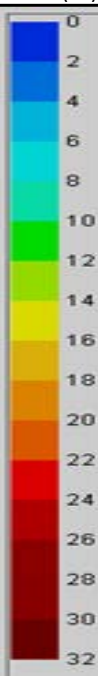


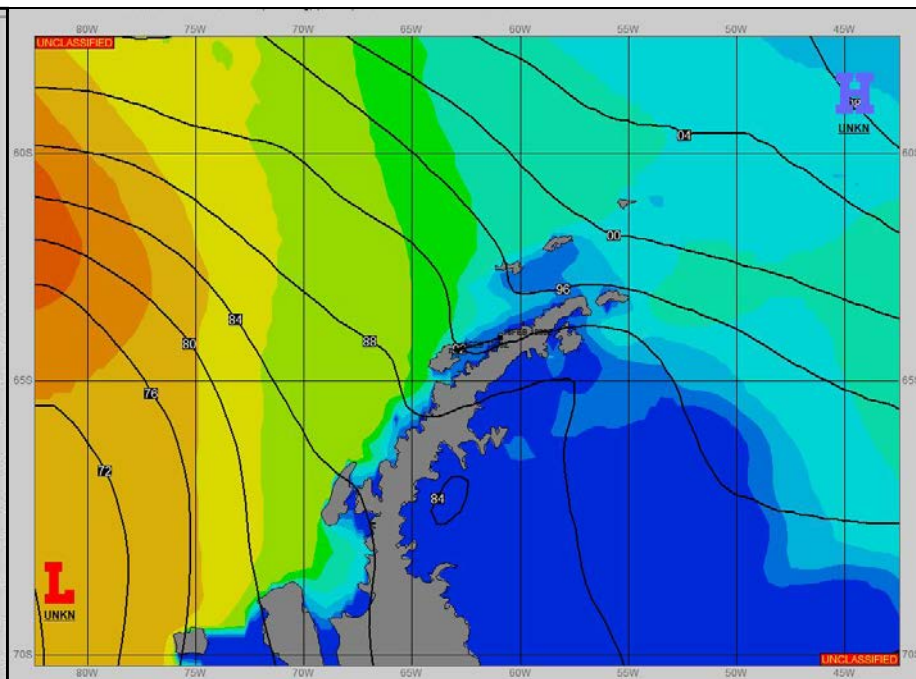
SURFACE ANALYSIS 17-Feb-2023 06Z



Seas (FT)



SURFACE FORECAST 18-Feb-2023 18Z



METSIT 06Z 17-Feb A FRONTAL WAVE OFF 966MB LOW NEAR 71S 085W TO PASS OPERATIONS AREA FROM APPROXIMATELY 17/1200Z THROUGH 17/1800Z. A WEAKER, SECONDARY WAVE TO CROSS OPERATIONS AREA FROM APPROXIMATELY 18/1800Z THROUGH 19/0600Z. BOTH WAVES WILL BRING NORTHEAST WINDS GUSTING TO THE 25 KNOT RANGE WITH PERIODS OF REDUCED VISIBILITY IN PRECIPITATION AND FOG. EXPECT MILD CONDITIONS WITH SCATTERING SKIES BETWEEN WAVES FROM APPROXIMATELY 18/0000Z THROUGH 18/1500Z.

FORECASTER NOTES

VALID TIME	17-Feb 12Z	17-Feb 18Z	18-Feb 00Z	18-Feb 06Z	18-Feb 12Z	18-Feb 18Z	19-Feb 00Z	19-Feb 06Z
SKY CONDITION	CLOUDY	CLOUDY	PARTLY CLOUDY	PARTLY CLOUDY	MOSTLY CLOUDY	CLOUDY	CLOUDY	CLOUDY
WEATHER	MIXED & FOG	RAIN	FOG	NONE	NONE	MIXED & FOG	RAIN	MIXED & FOG
VISIBILITY (NM)	3 - 5	1 - 3	2 - 4	UNRESTRICTED	UNRESTRICTED	4 - 6	2 - 4	1 - 3
SFC WINDS (DIR & KTS)	NE 15-20 GUST 25	NE 15-20 GUST 25	SW 10-15	SW 10-15	NE 5-10	NE 15-20 GUST 25	NE 15-20	NE 10-15
SFC MAX/MIN (°C)	3/1				2/1			
SST RANGE (°C)	2/1				2/1			
SEAS (DIR & FT)	NE-1-3	NE 0-2	NW 0-2	W 0-2	NW 0-2	NE 0-2	NE 1-3	N 0-2
ICE ACCRETION	NIL	NIL	NIL	NIL	NIL	NIL	NIL	NIL