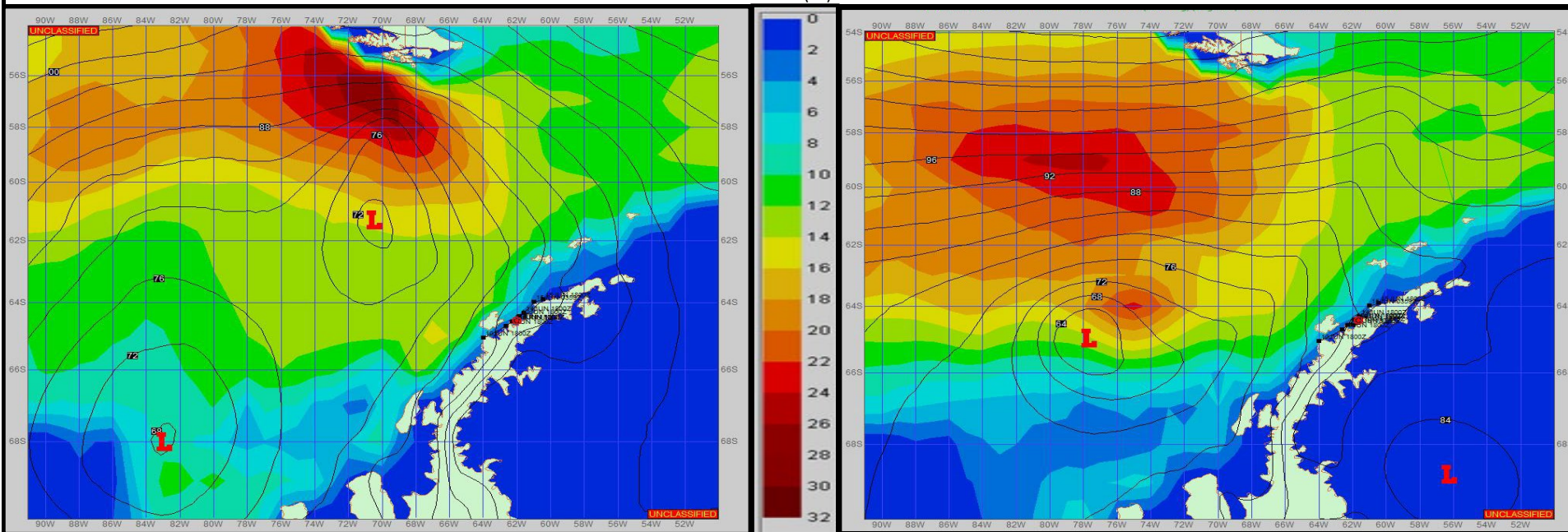


SURFACE ANALYSIS 17-Jun-2023 18Z

Seas (FT)

SURFACE FORECAST 19-Jun-2023 06Z



METSIT 21Z 17-Jun The large broad area of low pressure continues to spin and push out other low pressure centers toward Anvers Island. Strong gusty winds with heavy precipitation and with reduced visibilities can be expected at various times through the period. There is a timeframe between two systems when winds decrease and become light, with the occasional precipitation continuing. Although the forecast has sea states remaining fairly low, the gradient will tighten with strong swells building, west in the open waters. Winds may differ from those forecast due to funneling/sheltering effects of islands.

FORECASTER NOTES MCMURDO STATION WINTER OPERATIONS ARE IN EFFECT. WEAX SUPPORT WILL BE DONE BY THE MCMURDO STATION WEATHER OFFICE AND ISSUED BY 2100Z. SEE CONTACT INFO BELOW.

VALID TIME	17-Jun 21Z	18-Jun 06Z	18-Jun 12Z	18-Jun 18Z	19-Jun 00Z	19-Jun 06Z	19-Jun 12Z	19-Jun 18Z
SKY CONDITION	CLOUDY	CLOUDY	CLOUDY	CLOUDY	CLOUDY	CLOUDY	CLOUDY	CLOUDY
WEATHER	SNOW & FOG	SNOW & FOG	SNOW & FOG	SNOW & FOG	SNOW & FOG	SNOW & FOG	SNOW & FOG	SNOW & FOG
VISIBILITY (NM)	1/2 - 1	1/2 - 1	<1/2	1/2 - 1	1 - 3	2 - 4	1 - 3	1/2 - 1
SFC WINDS (DIR & KTS)	W 25-30 GUST 40	W 30-35 GUST 50	NW 20-25 GUST 40	VRB 5-10	VRB 5-10	SW 10-15 GUST 20	SW 15-20 GUST 30	NW 20-25 GUST 50
SFC MAX/MIN (°C)	-5 / -9				-2 / -5			
SST RANGE (°C)	-1 / -2				-1 / -2			
SEAS (DIR & FT)	NW 2-4	NW 2-4	NW 2-4	NW 2-4	NW 2-4	NW 2-4	NW 2-4	NW 2-4
ICE ACCRETION	HEAVY	HEAVY	HEAVY	LIGHT	LIGHT	MODERATE	MODERATE	MODERATE