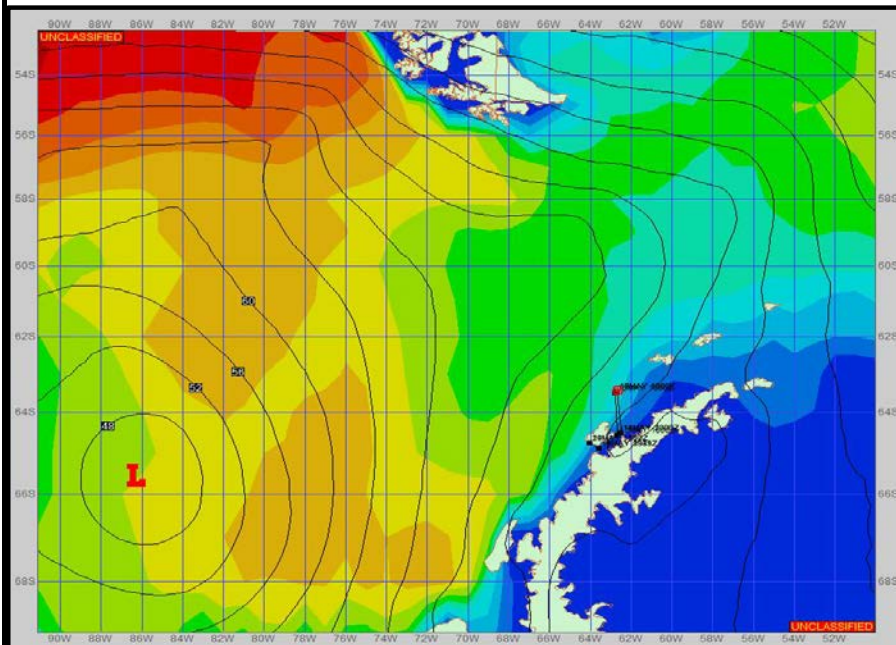
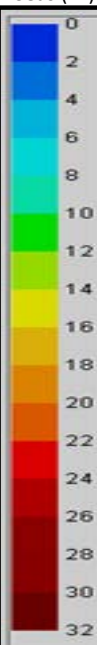


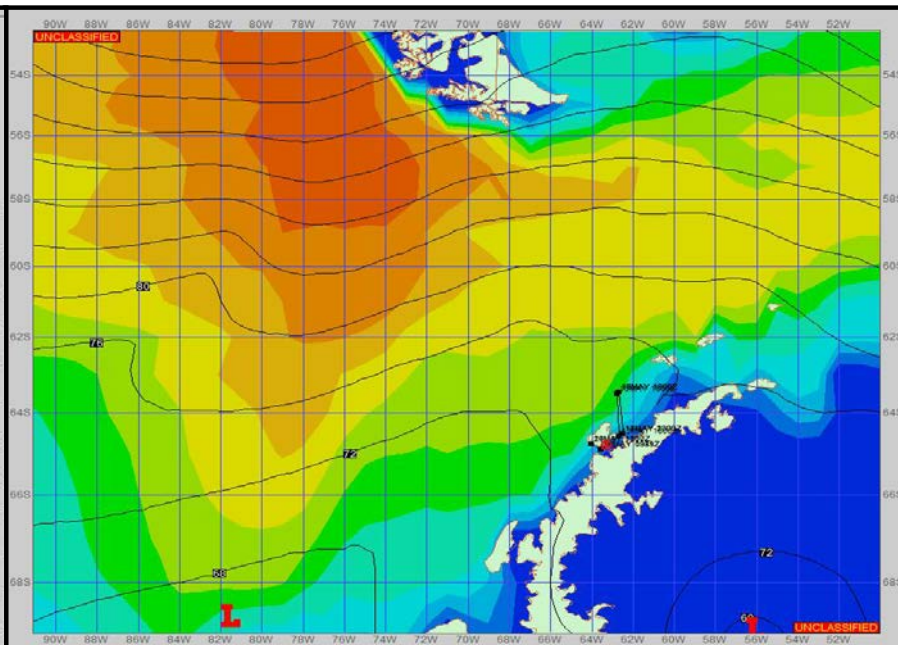
SURFACE ANALYSIS 17-May-2023 18Z



Seas (FT)



SURFACE FORECAST 19-May-2023 06Z



METSIT 21Z 17-May The low pressure on the SFC analysis continues to drift south as depicted on the SFC forecast. Conditions will vary through most of the period. From light/moderate winds to strong gusty winds. On/off precipitation in the latter part of the period. Seas states will be higher out in the open waters vs the area between the islands. Winds may differ from those forecast due to funneling/sheltering effects of islands.

FORECASTER NOTES MCMURDO STATION WINTER OPERATIONS ARE IN EFFECT. WEAX SUPPORT WILL BE DONE BY THE MCMURDO STATION WEATHER OFFICE AND ISSUED BY 2100Z. SEE CONTACT INFO BELOW.

VALID TIME	17-May 21Z	18-May 06Z	18-May 12Z	18-May 18Z	19-May 00Z	19-May 06Z	19-May 12Z	19-May 18Z
SKY CONDITION	CLOUDY	CLOUDY	CLOUDY	CLOUDY	CLOUDY	MOSTLY CLOUDY	CLOUDY	CLOUDY
WEATHER	SNOW	SNOW & FOG	SNOW & FOG	SNOW	SNOW	SNOW	SNOW	SNOW
VISIBILITY (NM)	3 - 5	1 - 3	1 - 3	2 - 4	1 - 3	2 - 4	2 - 4	2 - 4
SFC WINDS (DIR & KTS)	ENE 25-30 GUST 40	NE 15-20 GUST 25	N 10-15	N 5-10	N 10-15	NE 10-15	NE 10-15	NE 10-15
SFC MAX/MIN (°C)	1 / -2				0 / -4			
SST RANGE (°C)	1 / -1				1 / -1			
SEAS (DIR & FT)	NW 4-6	NW 4-6	NW 8-10	NW 2-4	NW 0-2	NW 0-2	NW 0-2	NW 0-2
ICE ACCRETION	MODERATE	MODERATE	MODERATE	LIGHT	LIGHT	LIGHT	LIGHT	LIGHT