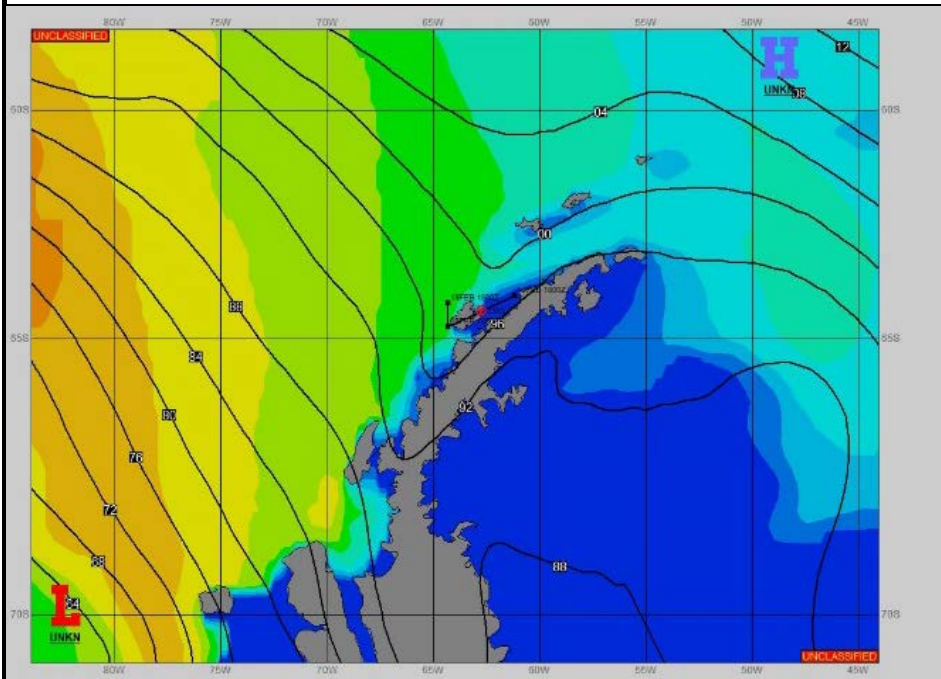
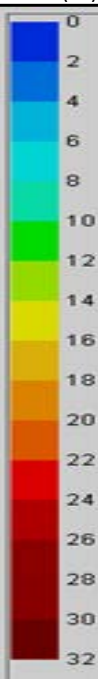


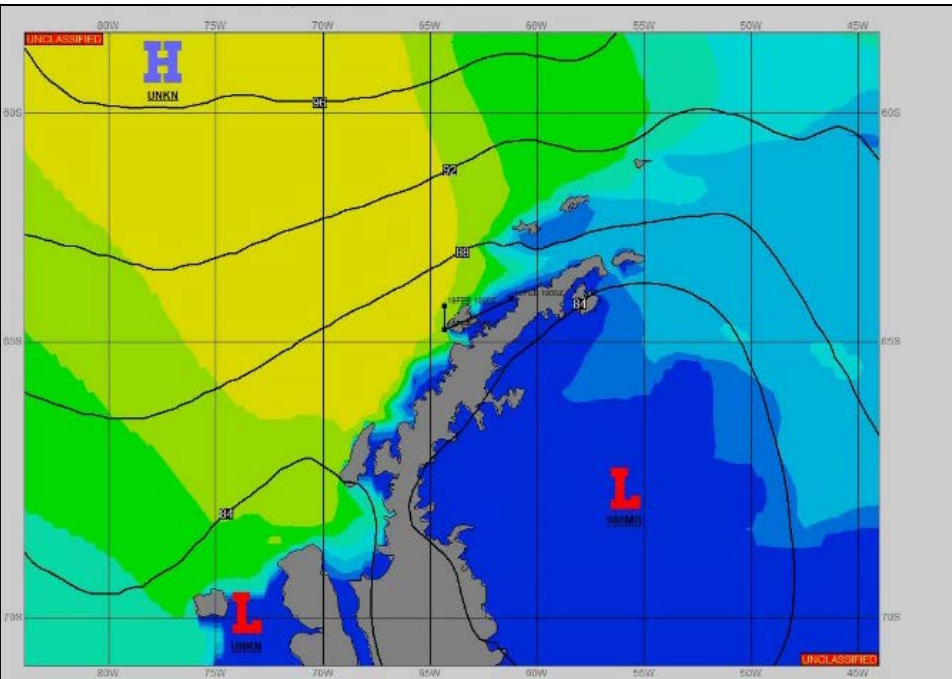
SURFACE ANALYSIS 18-Feb-2023 06Z



Seas (FT)



SURFACE FORECAST 19-Feb-2023 18Z



METSIT 06Z 18-Feb A WARM FRONTAL WAVE OFF LOW PRESSURE IN THE SOUTHERN BELLINSHAUSEN SEA TO PASS OPERATIONS AREA FROM APPROXIMATELY 18/0900Z THROUGH 19/0000Z. EXPECT A MIX OF PRECIPITATION FROM RAIN/SNOW MIXED TO RAIN TO SNOW. SHOULD HAVE A BIT OF A BREAK FROM WEATHER OVERNIGHT THROUGH MORNING. OPEN WATER AREAS TO THE WEST SHOULD HAVE GOOD VISIBILITY THROUGH THE END OF THE PERIOD WITH REDUCTIONS IN FOG, LIGHT SNOW NEARER TERRAIN AS HIGH PRESSURE BUILDS IN FROM THE WEST.

FORECASTER NOTES

VALID TIME	18-Feb 12Z	18-Feb 18Z	19-Feb 00Z	19-Feb 06Z	19-Feb 12Z	19-Feb 18Z	20-Feb 00Z	20-Feb 06Z
SKY CONDITION	CLOUDY	CLOUDY	CLOUDY	CLOUDY	CLOUDY	MOSTLY CLOUDY	CLOUDY	CLOUDY
WEATHER	MIXED	RAIN	SNOW & FOG	FOG	NONE	NONE	NONE	NONE
VISIBILITY (NM)	1 - 3	1/2 - 1	1/2 - 1	3 - 5	UNRESTRICTED	UNRESTRICTED	UNRESTRICTED	UNRESTRICTED
SFC WINDS (DIR & KTS)	NE 10-15	NE-E 20-25 GUST 35	NE 10-15	NW 5-10	NE 10-15	W 10-15	SW 15-20 GUST 25	SW 20-30
SFC MAX/MIN (°C)	3/0				2/0			
SST RANGE (°C)	2/1				2/1			
SEAS (DIR & FT)	NE 0-2	NW 9-12	NW 9-12	NW 9-12	W 10-13	W 12-15	NE 1-3	N 0-2
ICE ACCRETION	NIL	NIL	NIL	NIL	NIL	NIL	NIL	NIL