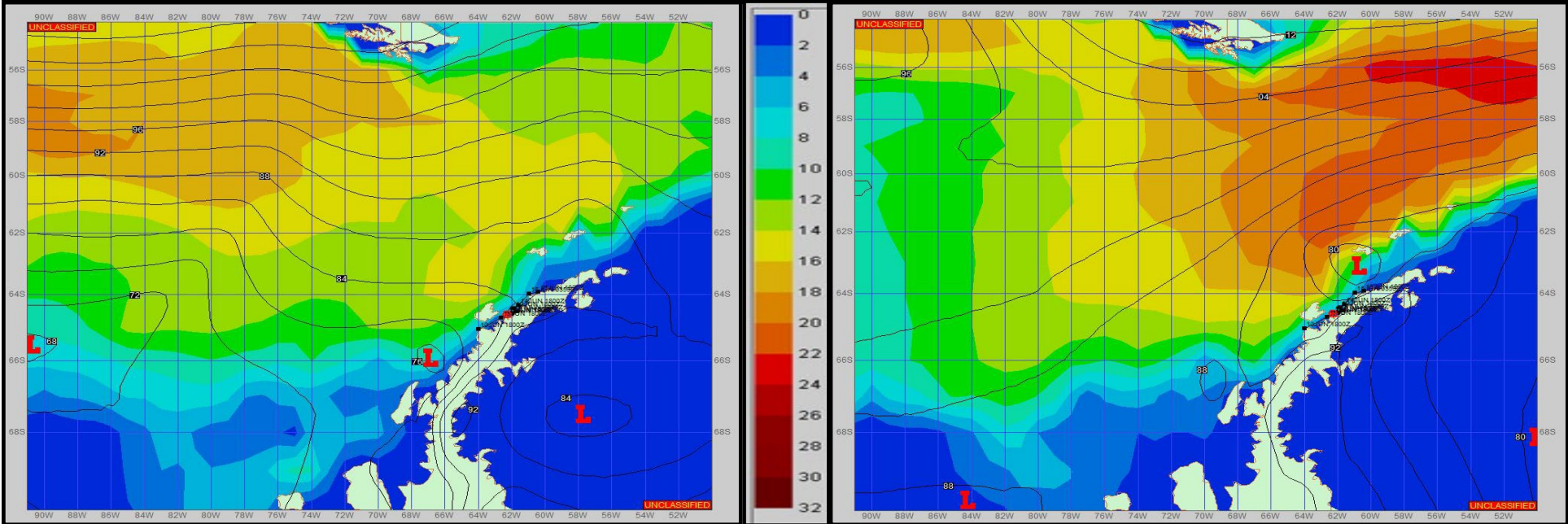


SURFACE ANALYSIS 18-Jun-2023 18Z

Seas (FT)

SURFACE FORECAST 20-Jun-2023 06Z



METSIT 21Z 18-Jun The large broad area of low pressure finally begins to move and will push east and northeast along the peninsula. Strong gusty winds with heavy precipitation and with reduced visibilities can be expected at various times through the period. Near the end of the period the low continues to push northeast and into the Drake with a weak pressure gradient following. This weak gradient will help clear a lot of the cloud cover out, resulting in pleasant conditions. Although the forecast has sea states remaining fairly low, the gradient will tighten with strong swells building, west in the open waters. Winds may differ from those forecast due to funneling/sheltering effects of islands.

FORECASTER NOTES MCMURDO STATION WINTER OPERATIONS ARE IN EFFECT. WEAX SUPPORT WILL BE DONE BY THE MCMURDO STATION WEATHER OFFICE AND ISSUED BY 2100Z. SEE CONTACT INFO BELOW.

VALID TIME	18-Jun 21Z	19-Jun 06Z	19-Jun 12Z	19-Jun 18Z	20-Jun 00Z	20-Jun 06Z	20-Jun 12Z	20-Jun 18Z
SKY CONDITION	CLOUDY	CLOUDY	CLOUDY	CLOUDY	CLOUDY	MOSTLY CLOUDY	PARTLY CLOUDY	PARTLY CLOUDY
WEATHER	SNOW & FOG	SNOW	SNOW & FOG	SNOW & FOG	SNOW	SNOW	SNOW	NONE
VISIBILITY (NM)	1/2 - 1	<1/2	<1/2	2 - 4	2 - 4	2 - 4	4 - 6	UNRESTRICTED
SFC WINDS (DIR & KTS)	SSW 5-10	SW 15-20	W 15-20 GUST 30	NW 15-20 GUST 30	NW 20-25 GUST 35	NW 20-25 GUST 35	NNW 15-20 GUST 25	NW 10-15
SFC MAX/MIN (°C)	-5 / -10				-7 / -12			
SST RANGE (°C)	-1 / -2				-1 / -2			
SEAS (DIR & FT)	NW 2-4	NW 2-4	NW 2-4	NW 2-4	NW 2-4	NW 4-6	NW 4-6	NW 2-4
ICE ACCRETION	MODERATE	MODERATE	HEAVY	MODERATE	MODERATE	MODERATE	MODERATE	LIGHT