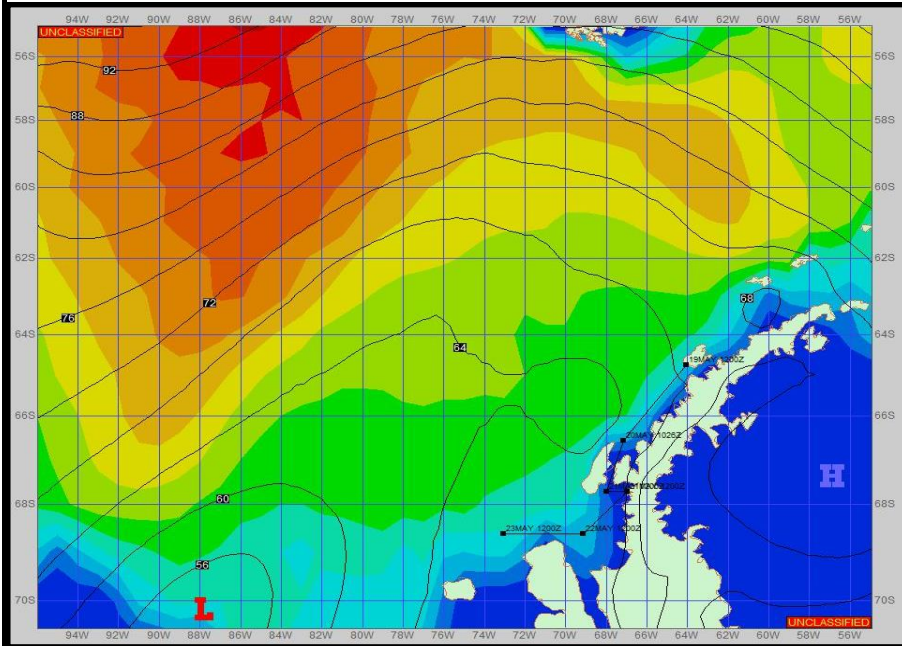


Ref A: MOVE REP 23-05 Sealing

Ref B:

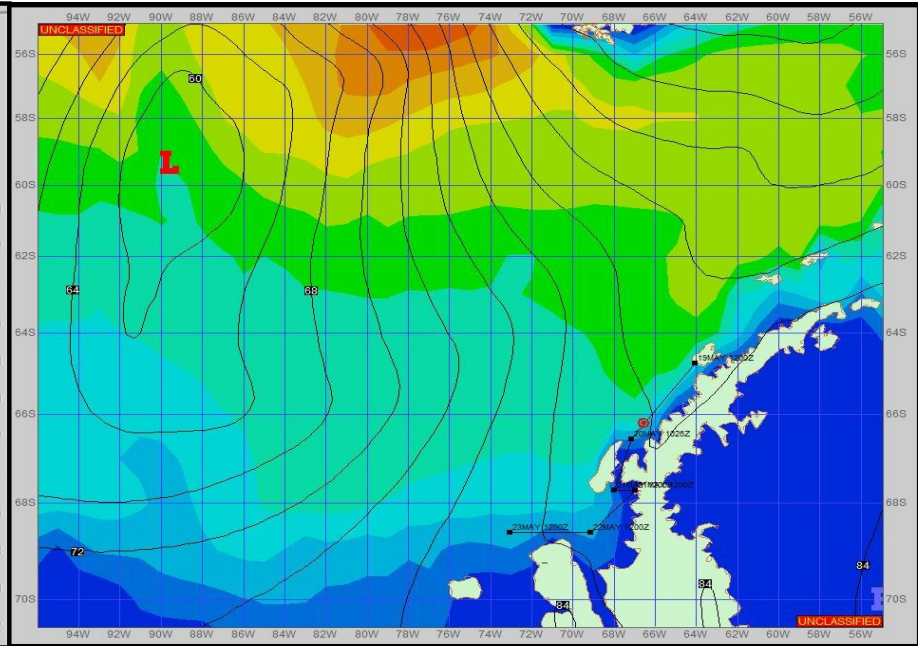
SURFACE ANALYSIS 18-May-2023 18Z



Seas (FT)



SURFACE FORECAST 20-May-2023 06Z



METSIT 21Z 18-May

Not much change from the previous WEAX sent earlier today...A low pressure system in the Bellingshausen Sea with trough parallel to the Antarctic Peninsula gradually weakens late today into tonight as a high pressure ridge builds along the west coast of the Antarctic Peninsula by tomorrow. Indications are for strong north-northeast winds today with precipitation developing by afternoon and becoming more persistent tonight as winds begin to decrease. Winds pickup at the end of the forecast period as you travel south and the pressure gradient begins tightening. Winds may differ from those forecast due to funneling/sheltering effects of islands.

FORECASTER NOTES

MCMURDO STATION WINTER OPERATIONS ARE IN EFFECT. WEAX SUPPORT WILL BE DONE BY THE MCMURDO STATION WEATHER OFFICE AND ISSUED BY 2100Z. SEE CONTACT INFO BELOW.

VALID TIME	18-May 21Z	19-May 06Z	19-May 12Z	19-May 18Z	20-May 00Z	20-May 06Z	20-May 12Z	20-May 18Z
SKY CONDITION	CLOUDY	CLOUDY	CLOUDY	CLOUDY	MOSTLY CLOUDY	CLOUDY	CLOUDY	CLOUDY
WEATHER	SNOW	SNOW & FOG	SNOW & FOG	SNOW & FOG	SNOW & FOG	NONE	NONE	SNOW & FOG
VISIBILITY (NM)	1 - 3	1 - 3	1 - 3	1 - 3	1 - 3	3 - 5	3 - 5	1/2 - 1
SFC WINDS (DIR & KTS)	N 10-15	NW 5-10	VRB 5-10	VRB 5-10	W 15-20 GUST 25	N 5-10	NE 25-30 GUST 40	NE 15-20 GUST 30
SFC MAX/MIN (°C)	1 / -2				-1 / -3			
SST RANGE (°C)	1 / -1				1 / -1			
SEAS (DIR & FT)	NW 4-6	NW 4-6	NW 4-6	NW 6-8	NW 6-8	NW 6-8	NW 2-4	N 0-2
ICE ACCRETION	LIGHT	LIGHT	LIGHT	LIGHT	LIGHT	LIGHT	LIGHT	LIGHT