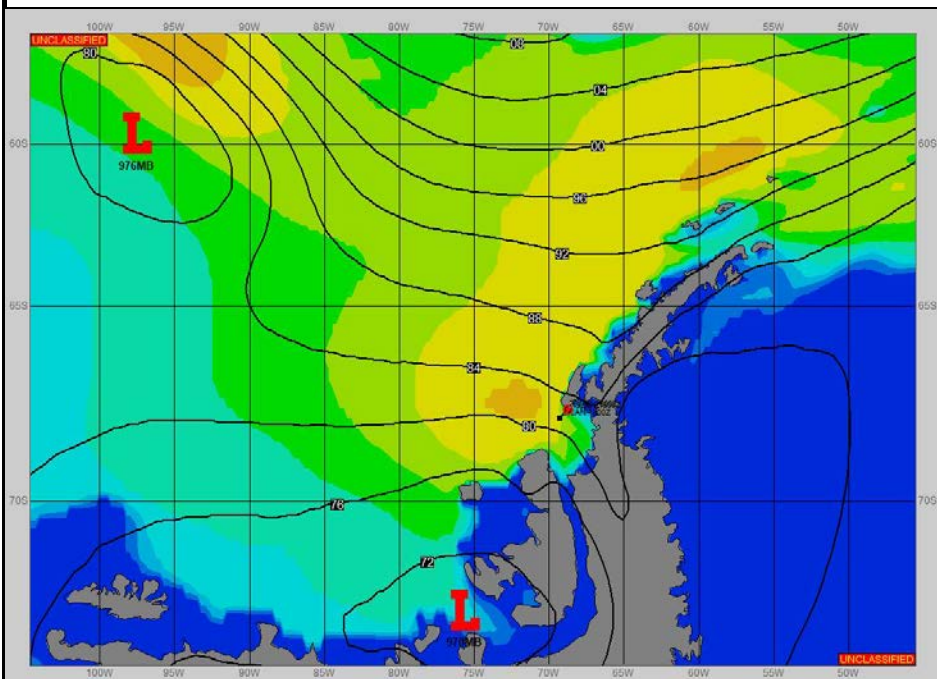
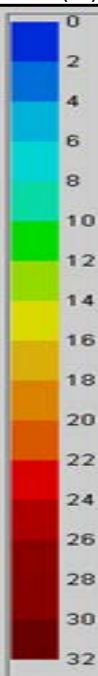


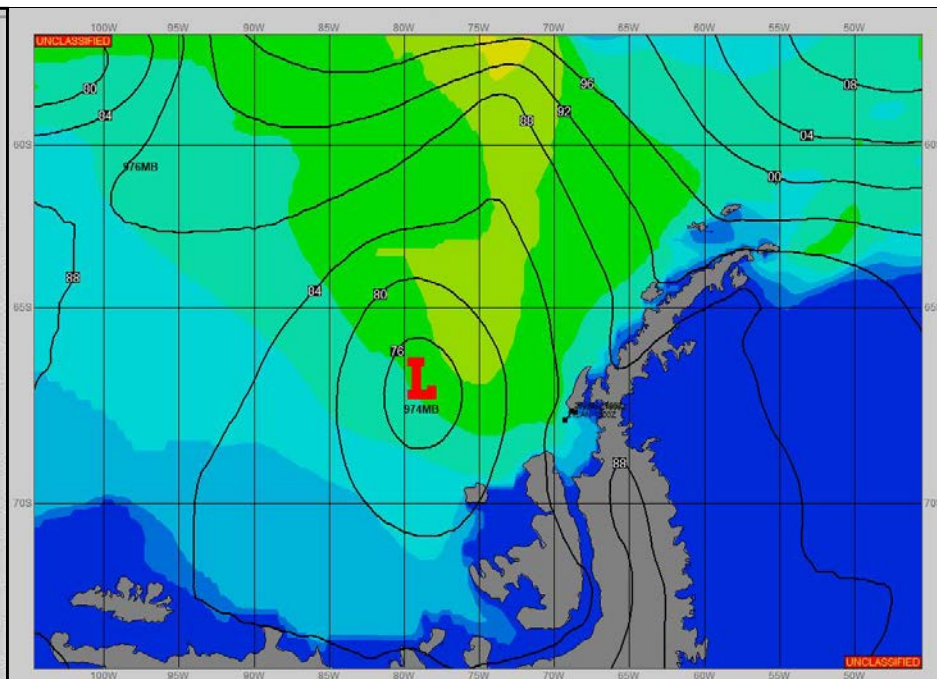
SURFACE ANALYSIS 20-Jan-2023 06Z



Seas (FT)



SURFACE FORECAST 21-Jan-2023 18Z



METSIT 06Z 20-Jan NORTHWEST GRADIENT REMAINS TIGHT BETWEEN TRANSIENT HIGH PRESSURE RIDGE AND LOW PRESSURE IN THE SOUTHEAST BELLINGSHAUSEN SEA. 976MB LOW NEAR 60S 097W WILL MOVE SOUTHEAST, DEEPENING THROUGH 20/1800Z, THEN FILLING TO 974MB NEAR 67S 079W WHERE IT WILL CONTINUE TO FILL. THIS LOW SHOULD PUSH A FRONTAL COMPLEX ACROSS THE AREA FROM APPROXIMATELY 21/0000Z THROUGH 21/0600Z, INCREASING WIND SPEEDS AND LOWERING VISIBILITY IN RAIN AND FOG.

FORECASTER NOTES WINDS MAY DIFFER FROM THOSE FORECAST DUE TO FUNNELING/SHELTERING EFFECTS OF ISLANDS.

VALID TIME	20-Jan 12Z	20-Jan 18Z	21-Jan 00Z	21-Jan 06Z	21-Jan 12Z	21-Jan 18Z	22-Jan 00Z	22-Jan 06Z
SKY CONDITION	CLOUDY	MOSTLY CLOUDY	MOSTLY CLOUDY	CLOUDY	PARTLY CLOUDY	MOSTLY CLOUDY	CLOUDY	CLOUDY
WEATHER	FOG	NONE	RAIN & FOG	RAIN & FOG	NONE	NONE	FOG	RAIN & FOG
VISIBILITY (NM)	3 - 5	UNRESTRICTED	3 - 5	1 - 3	UNRESTRICTED	UNRESTRICTED	3 - 5	3 - 5
SFC WINDS (DIR & KTS)	NW 15-20 GUST 30	NW 15-20 GUST 25	NE 10-15	NE 15-20 GUST 25	N 20-25	NE 15-20	NE 10	NE 5-10
SFC MAX/MIN (°C)	2/0				3/1			
SST RANGE (°C)	1 / 0				1 / 0			
SEAS (DIR & FT)	NW 8-10	NW 7-9	NW 7-9	NW 7-9	NW 7-9	NW 7-9	NW 8-10	NW 7-9
ICE ACCRETION	NIL	NIL	NIL	NIL	NIL	NIL	NIL	NIL