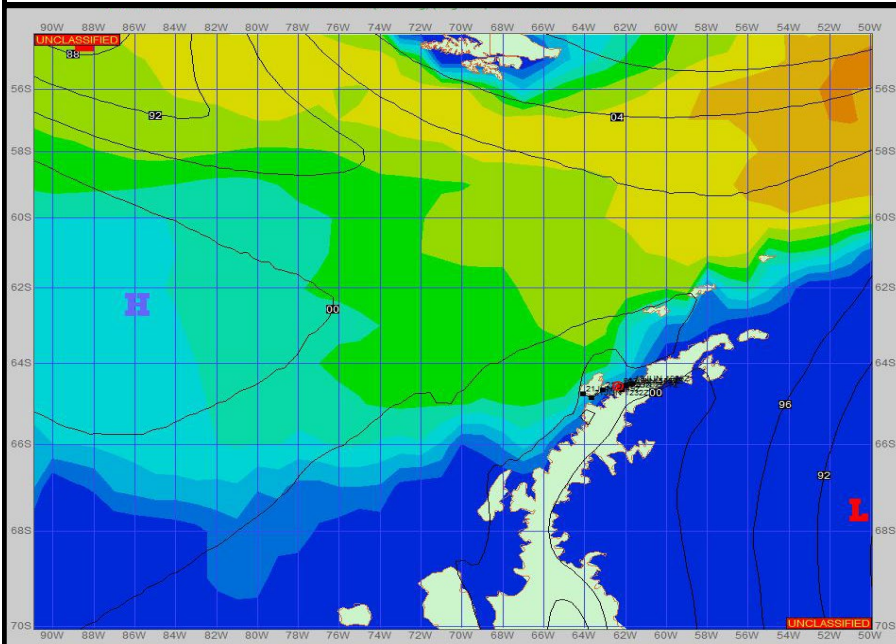
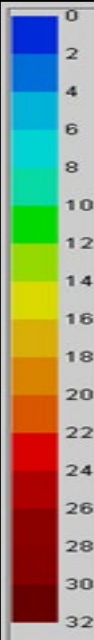


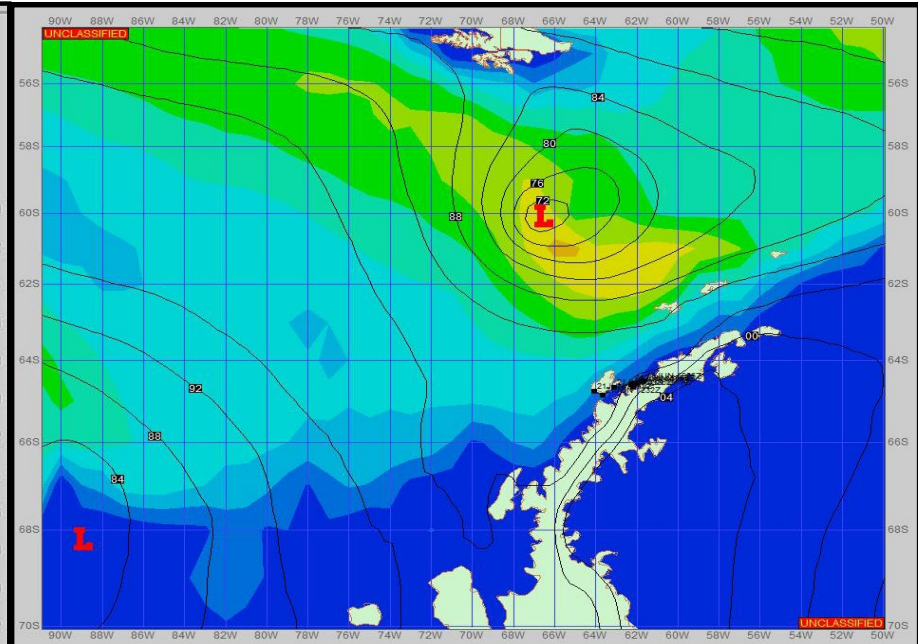
**SURFACE ANALYSIS 20-Jun-2023 18Z**



Seas (FT)



**SURFACE FORECAST 22-Jun-2023 06Z**



**METSIT 21Z**

**20-Jun**

High pressure ridging continues to envelope the area bringing in generally light winds along with light sea states. A low pressure system slides down the northeast side of the ridge, but looks to have minimal impacts. A broad and weak area of low pressure starts to develop, late in the period, south in the Bellingshausen Sea. Winds may differ from those forecast due to funneling/sheltering effects of islands. This is my final forecast unless otherwise required. Timely observations received from your ship are greatly appreciated. Outlook for arrival at Palmer Station: Cloudy skies, light northeasterly winds.

**FORECASTER NOTES**

MCMURDO STATION WINTER OPERATIONS ARE IN EFFECT. WEAX SUPPORT WILL BE DONE BY THE MCMURDO STATION WEATHER OFFICE AND ISSUED BY 2100Z. SEE CONTACT INFO BELOW.

VALID TIME	20-Jun 21Z	21-Jun 06Z	21-Jun 12Z	21-Jun 18Z	22-Jun 00Z	22-Jun 06Z	22-Jun 12Z	22-Jun 18Z
SKY CONDITION	CLOUDY	PARTLY CLOUDY	CLOUDY	CLOUDY	CLOUDY	CLOUDY	CLOUDY	CLOUDY
WEATHER	NONE	NONE	NONE	NONE	NONE	NONE	NONE	NONE
VISIBILITY (NM)	UNRESTRICTED	UNRESTRICTED	UNRESTRICTED	UNRESTRICTED	UNRESTRICTED	UNRESTRICTED	UNRESTRICTED	UNRESTRICTED
SFC WINDS (DIR & KTS)	NW 10-15	SW 10-15	SW 8-12	W 5-10	W 5-10	SW 5-10	SW 5-10	SSW 5-10
SFC MAX/MIN (°C)	-2 / -4				-5 / -7			
SST RANGE (°C)	-1 / -2				-1 / -2			
SEAS (DIR & FT)	ENE 0-2	W 0-2	W 0-2	W 0-2	NW 0-2	NW 0-2	NW 0-2	NW 0-2
ICE ACCRETION	LIGHT	LIGHT	LIGHT	LIGHT	LIGHT	LIGHT	LIGHT	LIGHT