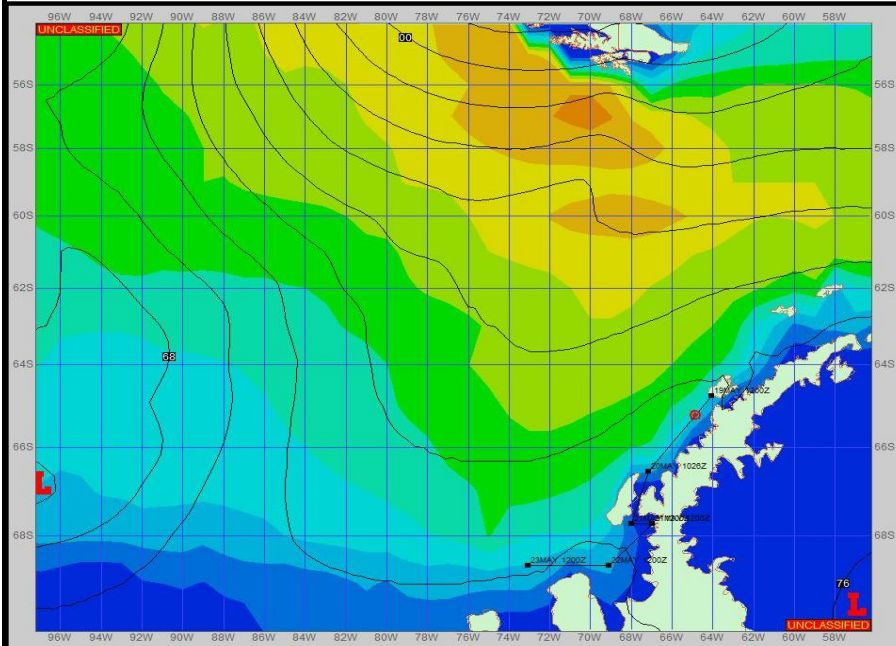


Ref A: MOVE REP 23-05 Sealing

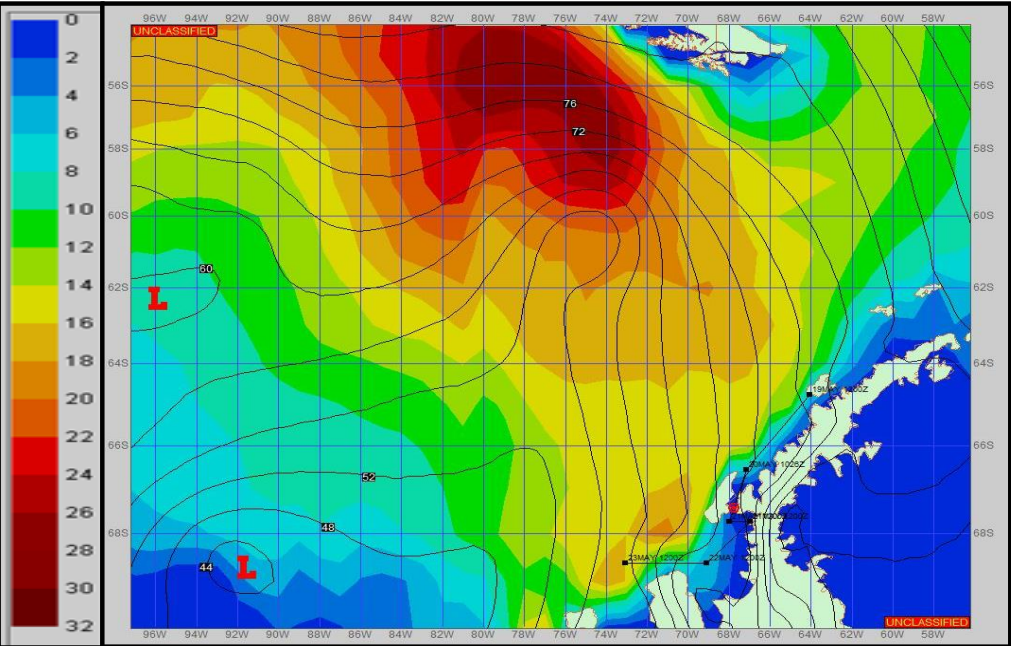
Ref B:

SURFACE ANALYSIS 19-May-2023 18Z



Seas (FT)

SURFACE FORECAST 21-May-2023 06Z



METSIT 21Z 19-May A series of deepening low pressure systems will drift in from the west, one moves northeast while the other moves southeast. Conditions will remain cloudy with snow through much of the forecast periods, with strong winds due to the tight pressure gradient. Sea states decrease as you head into the straits, being sheltered. Winds may differ from those forecast due to funneling/sheltering effects of islands.

FORECASTER NOTES MCMURDO STATION WINTER OPERATIONS ARE IN EFFECT. WEAX SUPPORT WILL BE DONE BY THE MCMURDO STATION WEATHER OFFICE AND ISSUED BY 2100Z. SEE CONTACT INFO BELOW.

| VALID TIME | 19-May 21Z | 20-May 06Z | 20-May 12Z | 20-May 18Z | 21-May 00Z | 21-May 06Z | 21-May 12Z | 21-May 18Z |
|-----------------------|---------------------|------------|---------------------|---------------------|---------------------|---------------------|---------------------|---------------------|
| SKY CONDITION | MOSTLY CLOUDY | CLOUDY | CLOUDY | CLOUDY | CLOUDY | CLOUDY | CLOUDY | CLOUDY |
| WEATHER | SNOW | NONE | NONE | SNOW & FOG | SNOW & FOG | SNOW & FOG | SNOW & FOG | SNOW & FOG |
| VISIBILITY (NM) | 1 - 3 | 2 - 4 | 1 - 3 | 1 - 3 | 1 - 3 | 1 - 3 | 1 - 3 | 1 - 3 |
| SFC WINDS (DIR & KTS) | NE 10-15 GUST 25 | S 5-10 | SW 25-30 GUST 40 | SW 15-20 GUST 30 | SW 10-15 GUST 20 | SW 10-15 GUST 25 | SW 25-30 GUST 40 | SW 25-30 GUST 35 |
| SFC MAX/MIN (°C) | -1 / -3 | | | | -5 / -13 | | | |
| SST RANGE (°C) | 0 / -1 | | | | 0 / -1 | | | |
| SEAS (DIR & FT) | W 4-6 | NW 4-6 | NW 2-4 | N 0-2 | N 0-2 | N 0-2 | N 0-2 | N 0-2 |
| ICE ACCRETION | MODERATE | LIGHT | MODERATE | MODERATE | MODERATE | MODERATE | MODERATE | MODERATE |