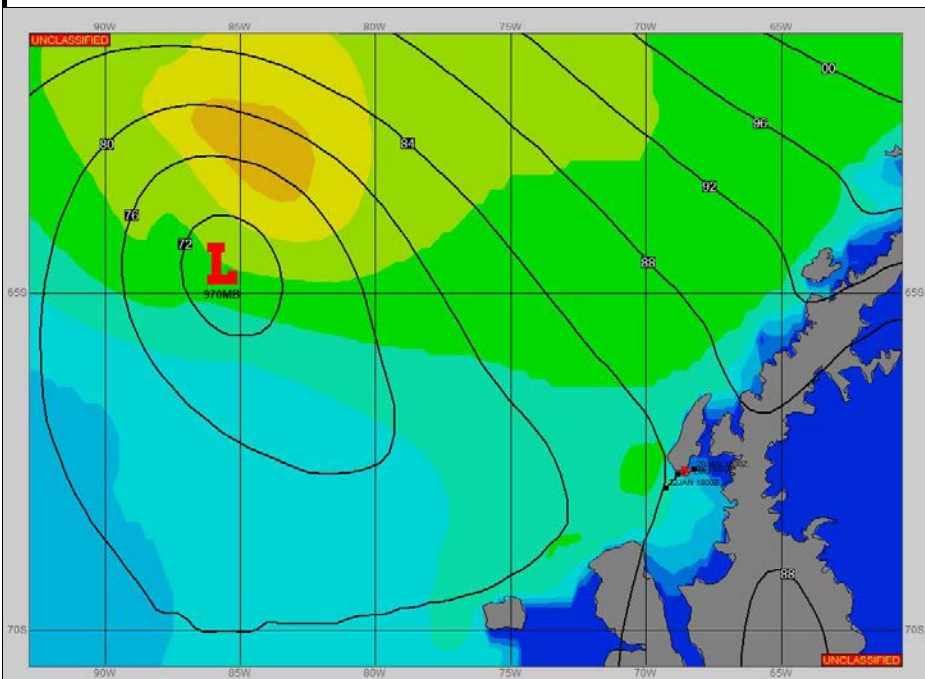


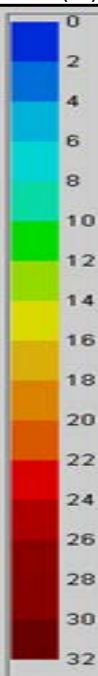
Ref A: SITREP 20 JAN 2023

Ref B:

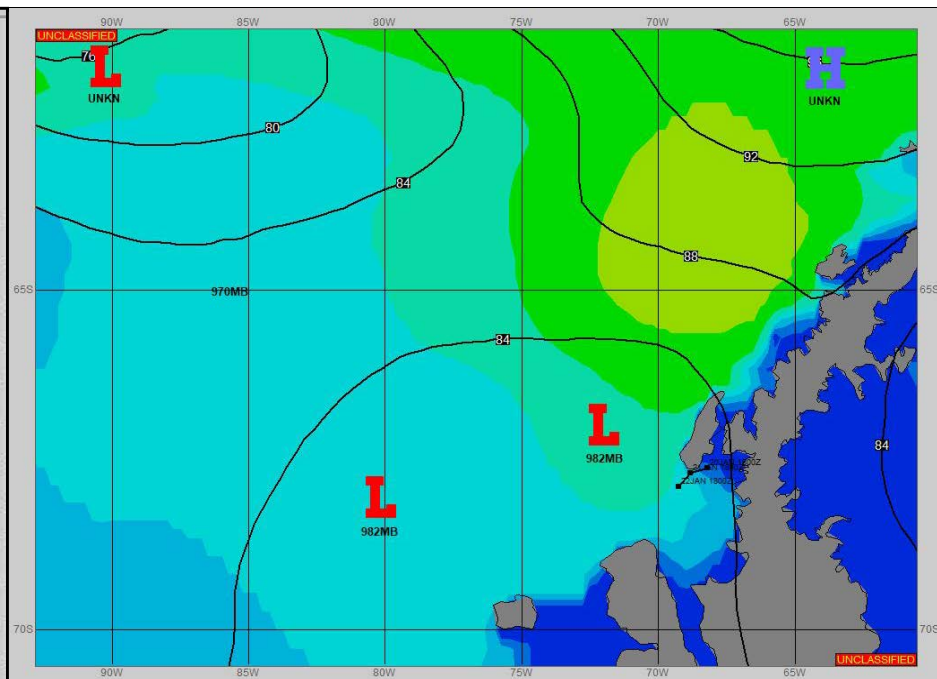
SURFACE ANALYSIS 21-Jan-2023 06Z



Seas (FT)



SURFACE FORECAST 22-Jan-2023 18Z



METSIT 06Z 21-Jan 970MB LOW NEAR 64S 084W TO FILL AS IT MOVES SOUTHEAST TOWARDS ALEXANDER ISLAND. EXPECT DECREASE IN WINDS WITH PERIODS OF REDUCED VISIBILITY IN FOG AND LIGHT PRECIPITATION AS THE CIRCULATION BECOMES MORE DIFFUSE.

FORECASTER NOTES WINDS MAY DIFFER FROM THOSE FORECAST DUE TO FUNNELING/SHELTERING EFFECTS OF ISLANDS.

VALID TIME	21-Jan 12Z	21-Jan 18Z	22-Jan 00Z	22-Jan 06Z	22-Jan 12Z	22-Jan 18Z	23-Jan 00Z	23-Jan 06Z
SKY CONDITION	MOSTLY CLOUDY	CLOUDY	CLOUDY	CLOUDY	CLOUDY	MOSTLY CLOUDY	MOSTLY CLOUDY	CLOUDY
WEATHER	SNOW & FOG	NONE	SNOW & FOG	SNOW & FOG	SNOW & FOG	NONE	NONE	NONE
VISIBILITY (NM)	4 - 6	UNRESTRICTED	4 - 6	1 - 3	3 - 5	UNRESTRICTED	UNRESTRICTED	UNRESTRICTED
SFC WINDS (DIR & KTS)	NE 15-20	NE 10-15	NE 10-15	NE 5-10	NE 5	NE 5-10	N 10	N 10-15
SFC MAX/MIN (°C)	2/0				2/0			
SST RANGE (°C)	1 / 0				1 / 0			
SEAS (DIR & FT)	NW 4-6	NW 4-6	NW 5-7	NW 6-8	NW 6-8	NW 6-8	NW 6-8	NW 6-8
ICE ACCRETION	NIL	NIL	NIL	NIL	NIL	NIL	NIL	NIL