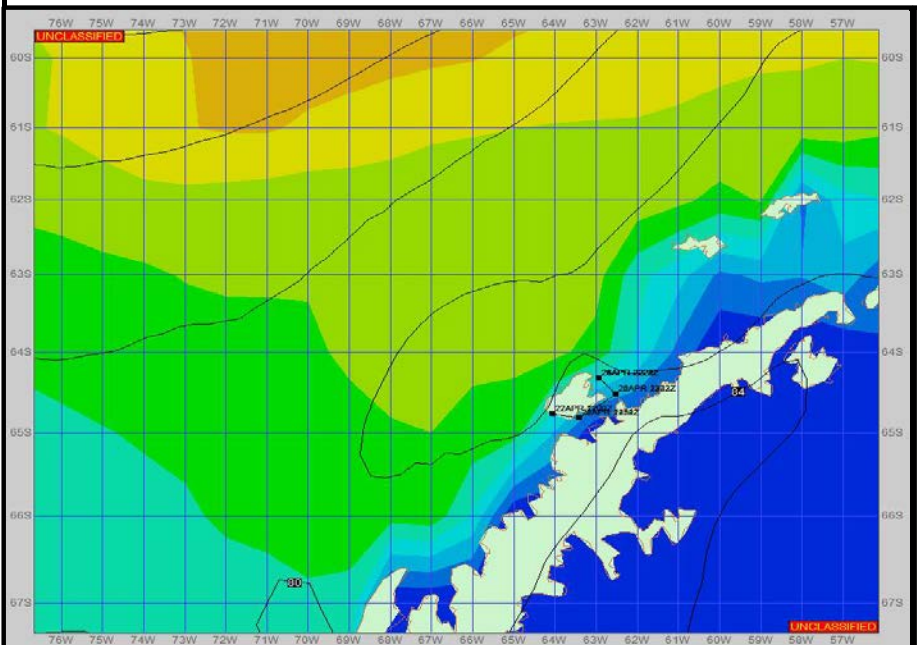


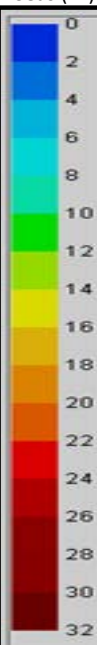
Ref A: MOVE REP 23-04 Fishing Dallmann Bay

Ref B:

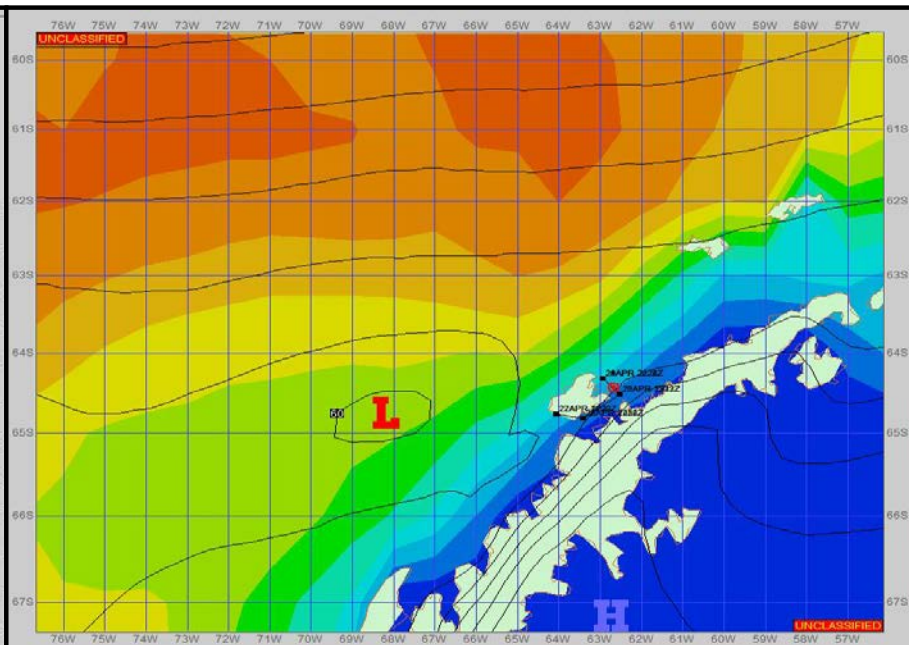
**SURFACE ANALYSIS 21-Apr-2023 18Z**



Seas (FT)



**SURFACE FORECAST 23-Apr-2023 06Z**



**METSIT 21Z**

**21-Apr**

Generally decent conditions, although reduced visibilities in snow may occur, otherwise light winds and sea states. A low will move into the Bellingshausen Sea with an associated frontal boundary which will create a tight pressure gradient. Expect snow/fog with reduced visibility through most of the period, especially during stronger winds. Winds will be northeasterly going up the east side of the island, but once exposed on the north side, winds switch from the southeast. Winds may differ from those forecast due to funneling/sheltering effects of islands.

**FORECASTER NOTES**

MCMURDO STATION WINTER OPERATIONS ARE IN EFFECT. WEAX SUPPORT WILL BE DONE BY THE MCMURDO STATION WEATHER OFFICE AND ISSUED BY 2100Z. SEE CONTACT INFO BELOW.

VALID TIME	21-Apr 21Z	22-Apr 06Z	22-Apr 12Z	22-Apr 18Z	23-Apr 00Z	23-Apr 06Z	23-Apr 12Z	23-Apr 18Z
SKY CONDITION	CLOUDY	CLOUDY	CLOUDY	CLOUDY	CLOUDY	CLOUDY	CLOUDY	MOSTLY CLOUDY
WEATHER	SNOW & FOG	SNOW & FOG	SNOW & FOG	NONE	SNOW & FOG	SNOW & FOG	SNOW & FOG	SNOW & FOG
VISIBILITY (NM)	1 - 3	1 - 3	3 - 5	4 - 6	<1/2	<1/2	1/2 - 1	1 - 3
SFC WINDS (DIR & KTS)	VRB 4-8	VRB 4-8	ENE 10-15	NE 15-20 GUST 25	ENE 25-30 GUST 40	SE 20-25 GUST 40	SE 10-20	SE 10-15
SFC MAX/MIN (°C)	-2 / -3				-8 / -12			
SST RANGE (°C)	0 / -1				0 / 0			
SEAS (DIR & FT)	E 0-2	E 0-2	E 4-6	E 2-4	E 2-4	NE 4-6	NE 8-10	NE 8-10
ICE ACCRETION	LIGHT	LIGHT	LIGHT	LIGHT	LIGHT	MODERATE	LIGHT	LIGHT