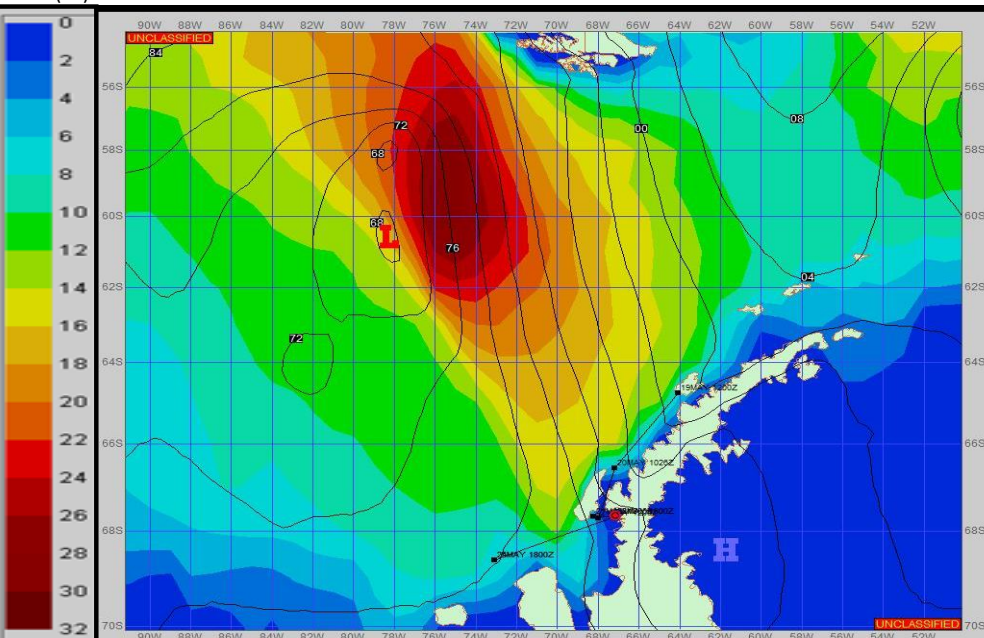
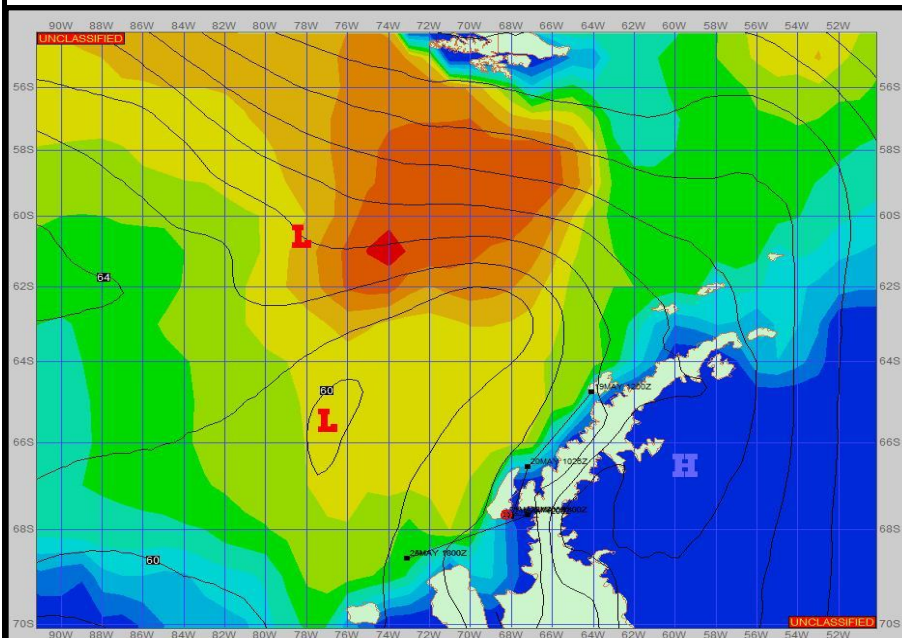


**SURFACE ANALYSIS 21-May-2023 18Z**

Seas (FT)

**SURFACE FORECAST 23-May-2023 06Z**



**METSIT 21Z 21-May** A series low pressure systems out west continue to replace each previous low. The next low will move east and then south will also strengthening. Conditions will continue to remain cloudy with occasional snow through much of the forecast period, with strong winds toward southerly directions continuing due to the tight pressure gradient. Sea states will remain low while being sheltered, but could increase out in open water. Winds/sea states may differ from those forecast due to funneling/sheltering effects of islands.

**FORECASTER NOTES** MCMURDO STATION WINTER OPERATIONS ARE IN EFFECT. WEAX SUPPORT WILL BE DONE BY THE MCMURDO STATION WEATHER OFFICE AND ISSUED BY 2100Z. SEE CONTACT INFO BELOW.

VALID TIME	21-May 21Z	22-May 06Z	22-May 12Z	22-May 18Z	23-May 00Z	23-May 06Z	23-May 12Z	23-May 18Z
SKY CONDITION	CLOUDY	CLOUDY	CLOUDY	CLOUDY	CLOUDY	CLOUDY	CLOUDY	CLOUDY
WEATHER	SNOW & FOG	SNOW & FOG	SNOW & FOG	SNOW & FOG	SNOW & FOG	SNOW & FOG	SNOW & FOG	NONE
VISIBILITY (NM)	2 - 4	1 - 3	3 - 5	2 - 4	3 - 5	2 - 4	3 - 5	4 - 6
SFC WINDS (DIR & KTS)	WSW 10-20	SW 10-20	SW 15-20 GUST 25	S 30-35 GUST 50	S 30-35 GUST 50	SE 20-25 GUST 45	S 20-25 GUST 40	SW 20-25 GUST 35
SFC MAX/MIN (°C)	-2 / -5				1 / -1			
SST RANGE (°C)	0 / -1				0 / -1			
SEAS (DIR & FT)	NW 0-2	N 0-2	N 0-2	N 0-2	N 2-4	N 2-4	N 2-4	N 2-4
ICE ACCRETION	MODERATE	MODERATE	MODERATE	MODERATE	MODERATE	MODERATE	MODERATE	MODERATE