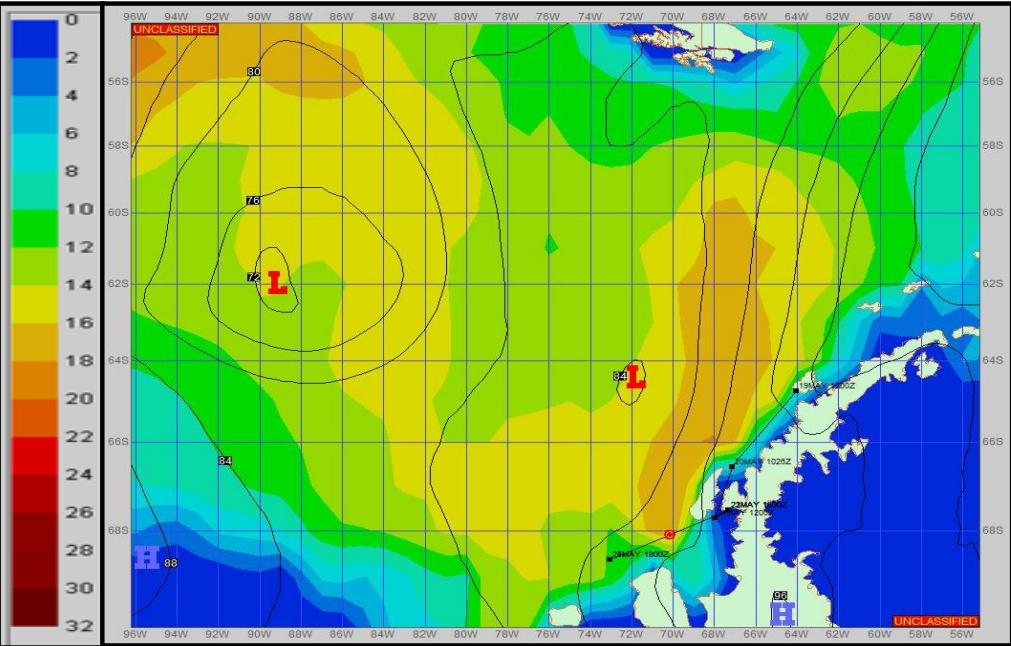
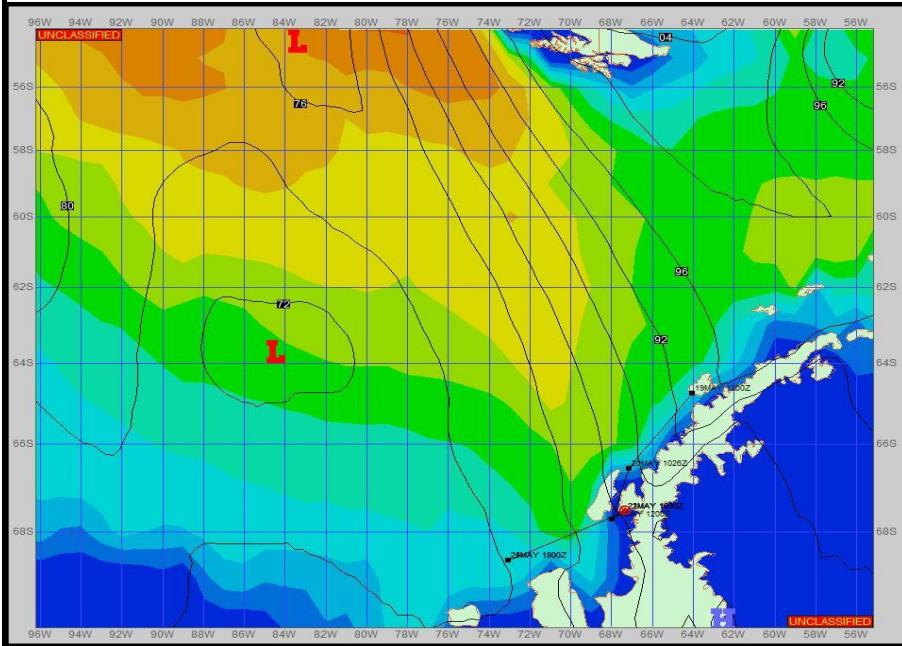


**SURFACE ANALYSIS 22-May-2023 18Z**

Seas (FT)

**SURFACE FORECAST 24-May-2023 06Z**



**METSIT 21Z 22-May** A series of low pressure systems continue to rotate into the area. Conditions will continue to remain cloudy with occasional snow, with strong winds toward southerly directions. Sea states will remain low while being sheltered, but increase out in open water. Winds/sea states may differ from those forecast due to funneling/sheltering effects of islands.

**FORECASTER NOTES** MCMURDO STATION WINTER OPERATIONS ARE IN EFFECT. WEAX SUPPORT WILL BE DONE BY THE MCMURDO STATION WEATHER OFFICE AND ISSUED BY 2100Z. SEE CONTACT INFO BELOW.

VALID TIME	22-May 21Z	23-May 06Z	23-May 12Z	23-May 18Z	24-May 00Z	24-May 06Z	24-May 12Z	24-May 18Z
SKY CONDITION	CLOUDY	CLOUDY	CLOUDY	CLOUDY	CLOUDY	CLOUDY	CLOUDY	MOSTLY CLOUDY
WEATHER	SNOW & FOG	SNOW & FOG	SNOW & FOG	SNOW & FOG	SNOW & FOG	SNOW & FOG	SNOW & FOG	NONE
VISIBILITY (NM)	1 - 3	1 - 3	2 - 4	4 - 6	2 - 4	3 - 5	3 - 5	4 - 6
SFC WINDS (DIR & KTS)	SSW 25-30 GUST 45	SSW 25-30 GUST 45	SSW 25-30 GUST 45	SSW 30-35 GUST 50	S 15-20 GUST 25	SW 25-30 GUST 40	SW 30-35 GUST 45	SE 10-15
SFC MAX/MIN (°C)	3 / -3				1 / -1			
SST RANGE (°C)	0 / -1				0 / -1			
SEAS (DIR & FT)	NW 0-2	N 0-2	N 0-2	N 0-2	NW 10-12	NW 12-14	NNW 10-12	NNE 10-12
ICE ACCRETION	MODERATE	MODERATE	MODERATE	MODERATE	MODERATE	MODERATE	MODERATE	MODERATE