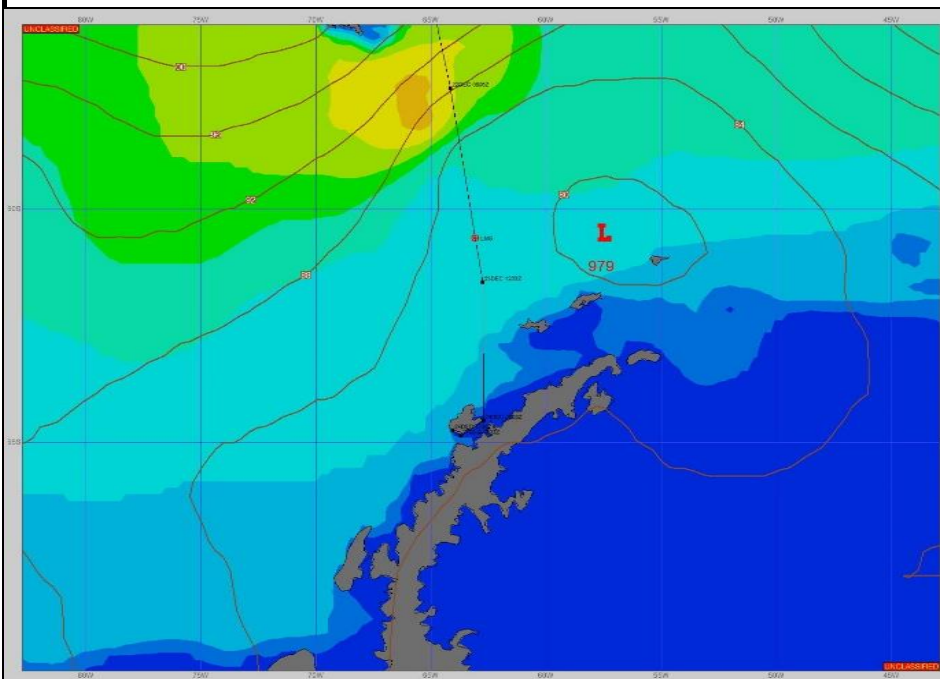


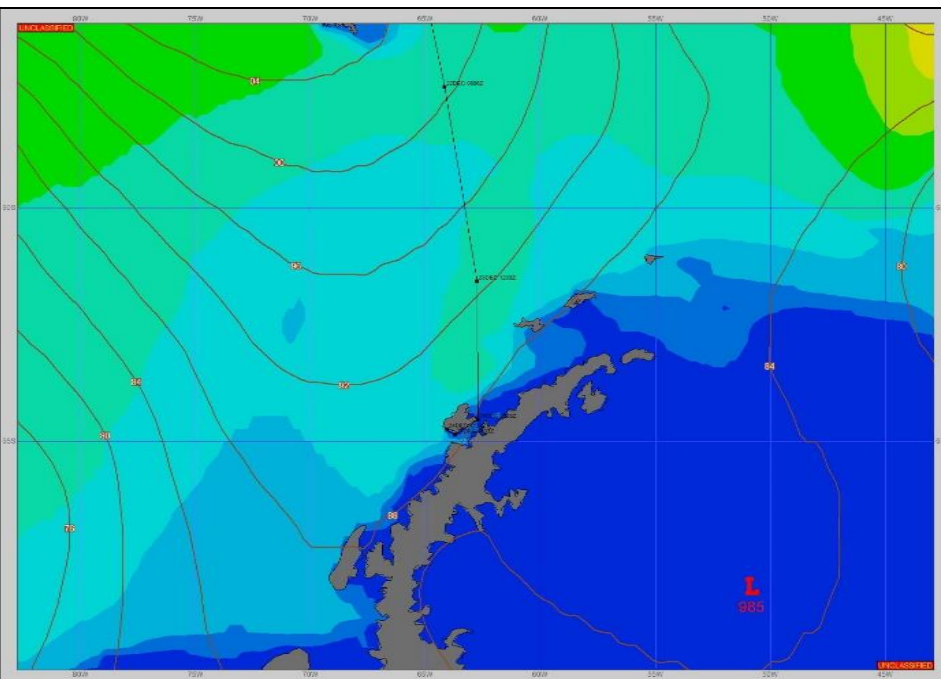
SURFACE ANALYSIS 23-Dec-2023 06Z



Seas (FT)



SURFACE FORECAST 24-Dec-2023 18Z



METSIT 06Z 23-Dec A 979MB LOW TRANSITS THE DRAKE PASSAGE TODAY PRODUCING EXTENSIVE CLOUD COVER, LIGHT RAIN AND FOG OVER YOUR PROJECTED COURSE. EXPECT MODERATE SEAS TAPERING DOWN TO SLIGHT AS YOU APPROACH THE COAST WITH A GENTLE TO MODERATE BREEZE.

FORECASTER NOTES

Winds may differ from those forecast due to funneling/sheltering effects between Anvers Island and the Peninsula coast. This is my final forecast unless otherwise required. Timely observations received from your ship greatly appreciated. arrival at your destination: Please see Palmer Daily Forecast.

Outlook for

VALID TIME	23-Dec 12Z	23-Dec 18z	24-Dec 00Z	24-Dec 06Z	24-Dec 12Z	24-Dec 18Z	25-Dec 00Z	25-Dec 06Z
SKY CONDITION	CLOUDY	CLOUDY	MOSTLY CLOUDY	MOSTLY CLOUDY	CLOUDY			
WEATHER	RAIN & FOG	RAIN & FOG	FOG	FOG	FOG	IN PORT	IN PORT	IN PORT
VISIBILITY (NM)	1/2 - 1	1 - 3	1 - 3	<1/2	<1/2	PALMER STATION	PALMER STATION	PALMER STATION
SFC WINDS (DIR & KTS)	NW 5-10	NW 10-15	NW 5-10	WSW 5-10	SW 5-10			
SFC MAX/MIN (°C)	5/1							
SST RANGE (°C)	9/6							
SEAS (DIR & FT)	W 5-7	W 5-7	W 4-6	SW 0-2	SW 0-2, < 1 IP			
ICE ACCRETION	NIL	NIL	NIL	LIGHT	LIGHT			