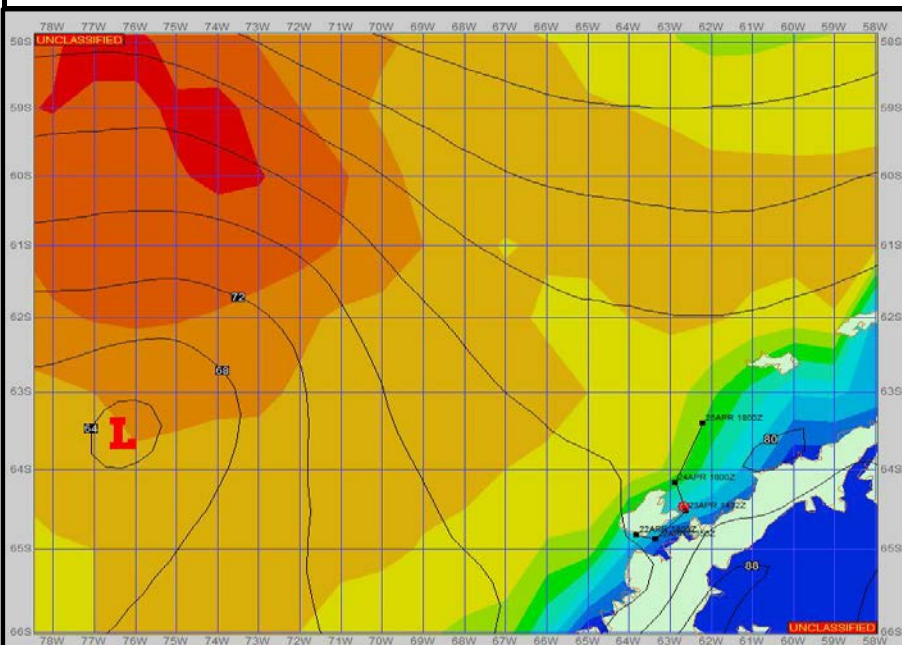


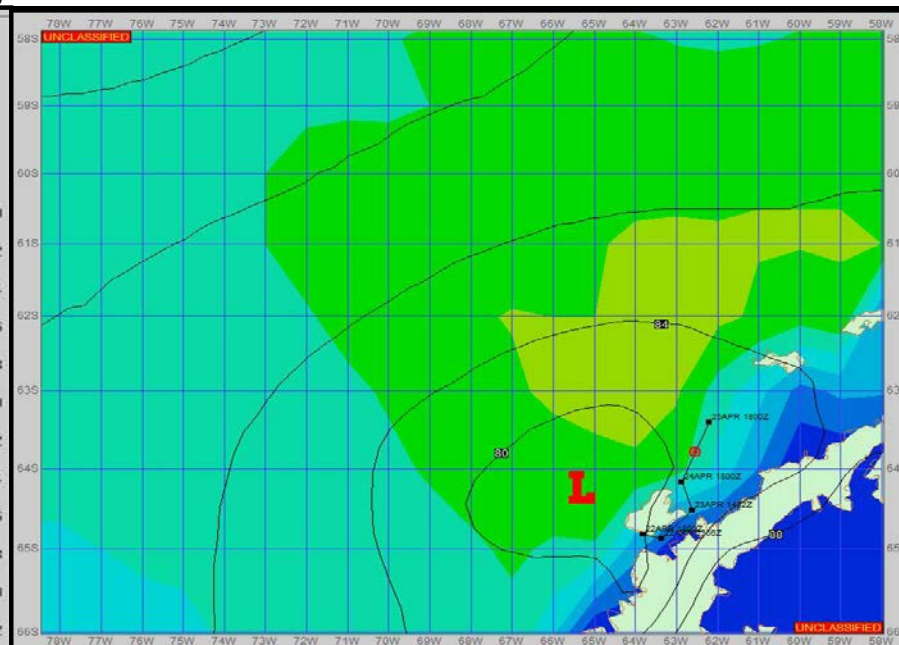
SURFACE ANALYSIS 23-Apr-2023 18Z



Seas (FT)



SURFACE FORECAST 25-Apr-2023 06Z



METSIT 21Z 23-Apr The low continues to move up the peninsula and over your track all the while weakening but still bring some impacts to the forecast period. A tight pressure gradient keeps the winds fairly strong with decrease periods. Expect snow/fog with reduced visibility through most of the period, especially during stronger winds. Winds may differ from those forecast due to funneling/sheltering effects of islands.

FORECASTER NOTES MCMURDO STATION WINTER OPERATIONS ARE IN EFFECT. WEAX SUPPORT WILL BE DONE BY THE MCMURDO STATION WEATHER OFFICE AND ISSUED BY 2100Z. SEE CONTACT INFO BELOW.

VALID TIME	23-Apr 21Z	24-Apr 06Z	24-Apr 12Z	24-Apr 18Z	25-Apr 00Z	25-Apr 06Z	25-Apr 12Z	25-Apr 18Z
SKY CONDITION	CLOUDY	CLOUDY	MOSTLY CLOUDY	MOSTLY CLOUDY	CLOUDY	CLOUDY	MOSTLY CLOUDY	MOSTLY CLOUDY
WEATHER	SNOW & FOG	SNOW & FOG	SNOW & FOG	SNOW & FOG	SNOW & FOG	SNOW & FOG	SNOW & FOG	NONE
VISIBILITY (NM)	1 - 3	1 - 3	1 - 3	1 - 3	1 - 3	1 - 3	1 - 3	2 - 4
SFC WINDS (DIR & KTS)	NW 10-15 GUST 25	NW 15-20 GUST 30	NW 15-20 GUST 30	NNW 8-12	N 15-20 GUST 25	NW 10-15 GUST 20	VRB 8-12	SW 15-20 GUST 25
SFC MAX/MIN (°C)	-1 / -9				1 / -1			
SST RANGE (°C)	0 / 0				1 / 0			
SEAS (DIR & FT)	WNW 6-8	WNW 6-8	NW 8-10	NW 10-12	NW 10-12	NW 10-12	NW 8-10	WNW 6-8
ICE ACCRETION	MODERATE	MODERATE	MODERATE	LIGHT	MODERATE	MODERATE	LIGHT	MODERATE