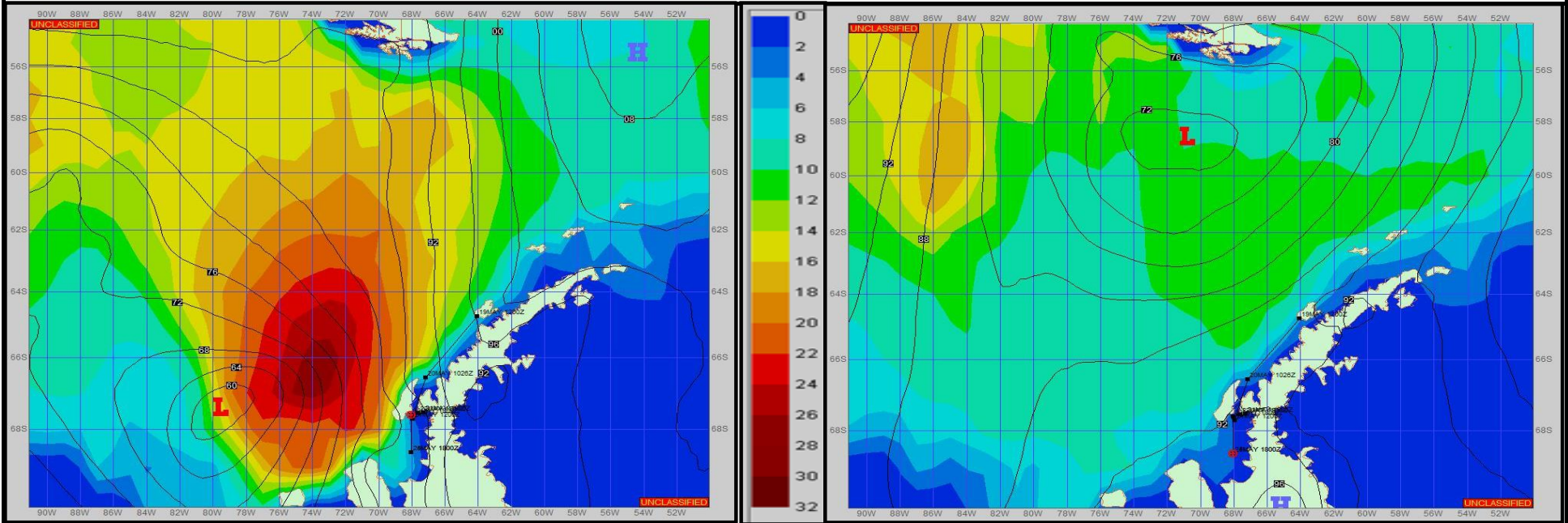


SURFACE ANALYSIS 23-May-2023 18Z

Seas (FT)

SURFACE FORECAST 25-May-2023 06Z



METSIT 21Z 23-May The low pressure on the SFC Analysis moves south while also weakening. A new low pressure center to the north, moves from west to east into the Drake. Conditions remain cloudy with occasional snow, with strong winds toward southerly directions with improving conditions late in the forecast. Winds decrease and shifts toward the north as well. Sea states remain low and steady. Winds may differ from those forecast due to funneling/sheltering effects of islands.

FORECASTER NOTES MCMURDO STATION WINTER OPERATIONS ARE IN EFFECT. WEAX SUPPORT WILL BE DONE BY THE MCMURDO STATION WEATHER OFFICE AND ISSUED BY 2100Z. SEE CONTACT INFO BELOW.

VALID TIME	23-May 21Z	24-May 06Z	24-May 12Z	24-May 18Z	25-May 00Z	25-May 06Z	25-May 12Z	25-May 18Z
SKY CONDITION	CLOUDY	CLOUDY	CLOUDY	CLOUDY	CLOUDY	CLOUDY	CLOUDY	CLOUDY
WEATHER	NONE	NONE	SNOW & FOG	SNOW & FOG	SNOW & FOG	NONE	NONE	NONE
VISIBILITY (NM)	3 - 5	3 - 5	2 - 4	2 - 4	2 - 4	3 - 5	4 - 6	4 - 6
SFC WINDS (DIR & KTS)	S 15-20 GUST 30	S 15-20 GUST 25	SW 10-15	SW 10-15 GUST 25	SE 10-15	N 10-15	N 10-15	NW 5-10
SFC MAX/MIN (°C)	1 / -1				1 / -1			
SST RANGE (°C)	0 / -1				0 / -1			
SEAS (DIR & FT)	NW 4-6	NW 4-6	NW 2-4	NW 2-4	NW 2-4	NW 2-4	NW 2-4	NW 0-2
ICE ACCRETION	MODERATE	MODERATE	LIGHT	MODERATE	LIGHT	LIGHT	LIGHT	LIGHT