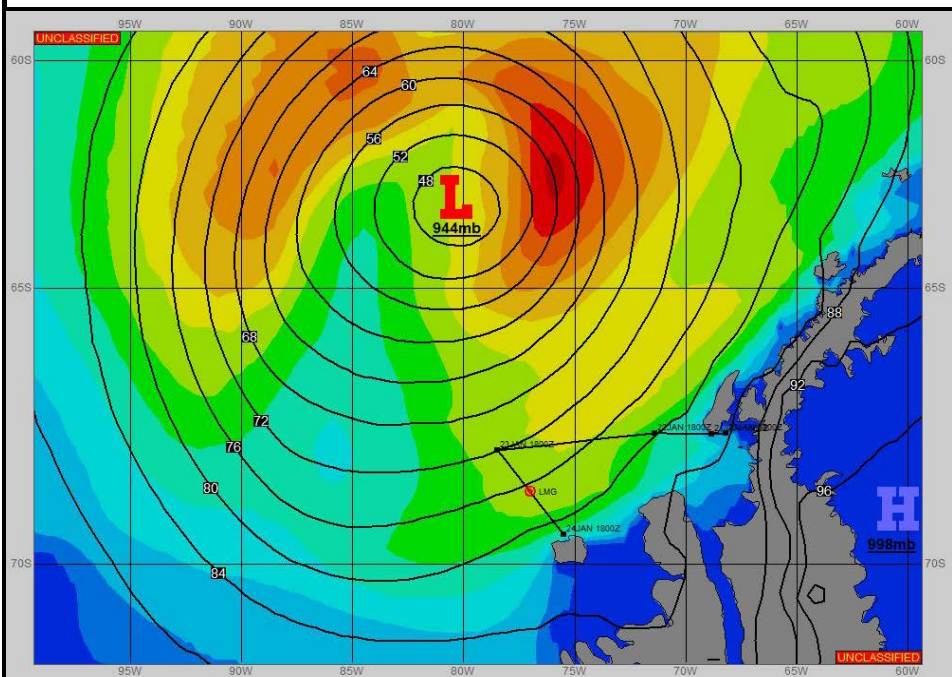
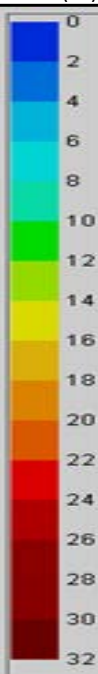


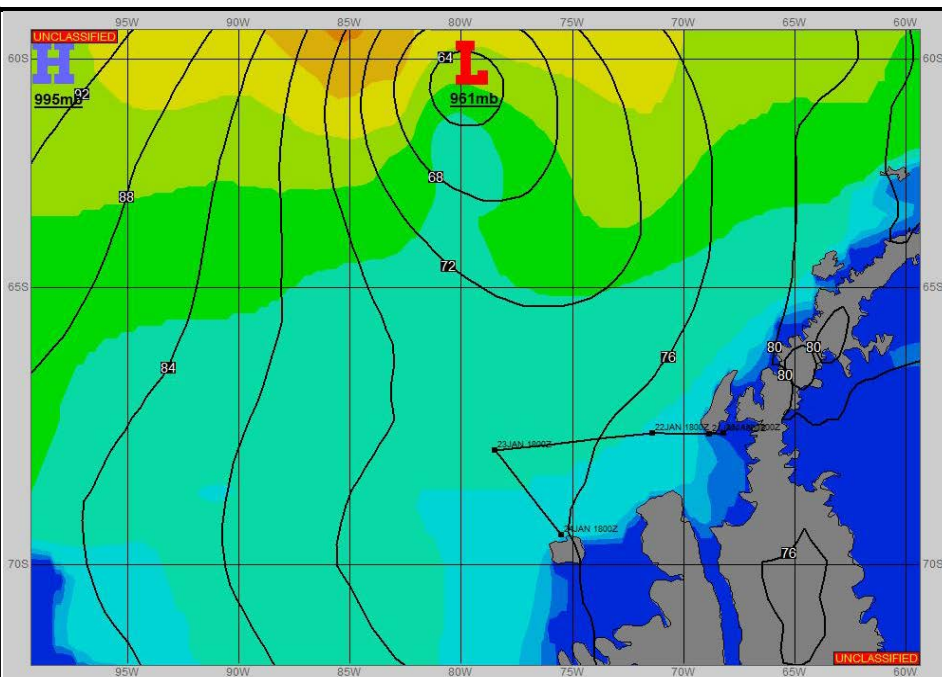
**SURFACE ANALYSIS 24-Jan-2023 06Z**



Seas (FT)



**SURFACE FORECAST 25-Jan-2023 18Z**



**METSIT 06Z 24-Jan**

A DEEP LOW PRESSURE SYSTEM TO THE NORTH OF YOUR LOCATION WILL SLOWLY WEAKEN TODAY AND BEGIN TO PULL BACK TO THE NORTH LATER TONIGHT. WHILE THE WINDS WILL BACK OFF FAIRLY QUICKLY TODAY AS YOU PROGRESS FURTHER SOUTH, THE SWELL HEIGHTS WILL LINGER INTO TONIGHT BEFORE STARTING TO EASE TOMORROW. CLOUDINESS, SLEET, AND FOG WILL ALL REMAIN PREVALENT THROUGH THE FORECAST PERIOD, KEEPING VISIBILITIES ON THE LOWER END.

**FORECASTER NOTES**

To assist with ship tracking and ensure the most accurate forecast possible, please include updated waypoints out to 48hrs with all SITREPs. Winds may differ from those forecast due to funneling/sheltering effects of islands.

VALID TIME	24-Jan 12Z	24-Jan 18Z	25-Jan 00Z	25-Jan 06Z	25-Jan 12Z	25-Jan 18Z	26-Jan 00Z	26-Jan 06Z
SKY CONDITION	CLOUDY	CLOUDY	CLOUDY	CLOUDY	CLOUDY	CLOUDY	CLOUDY	CLOUDY
WEATHER	MIXED & FOG	MIXED & FOG	MIXED & FOG	MIXED & FOG	MIXED & FOG	MIXED & FOG	FOG	FOG
VISIBILITY (NM)	<1/2	<1/2	1/2 - 1	1/2 - 1	1/2 - 1	1 - 3	1/2 - 1	1/2 - 1
SFC WINDS (DIR & KTS)	E 25-30 GUST 45	E 10-15 GUST 20	NE 10-15 GUST 20	NE 10-15 GUST 20	NE 10-15	NE 10-15	NE 10-15	N 10-15
SFC MAX/MIN (°C)	2 / -1				1 / -1			
SST RANGE (°C)	1 / 0				1 / 0			
SEAS (DIR & FT)	NE 11-14	NE 9-12	N 9-12	N 9-12	N 8-10	N 6-8	N 5-7	N 5-7
ICE ACCRETION	LIGHT	LIGHT	LIGHT	LIGHT	LIGHT	LIGHT	LIGHT	LIGHT