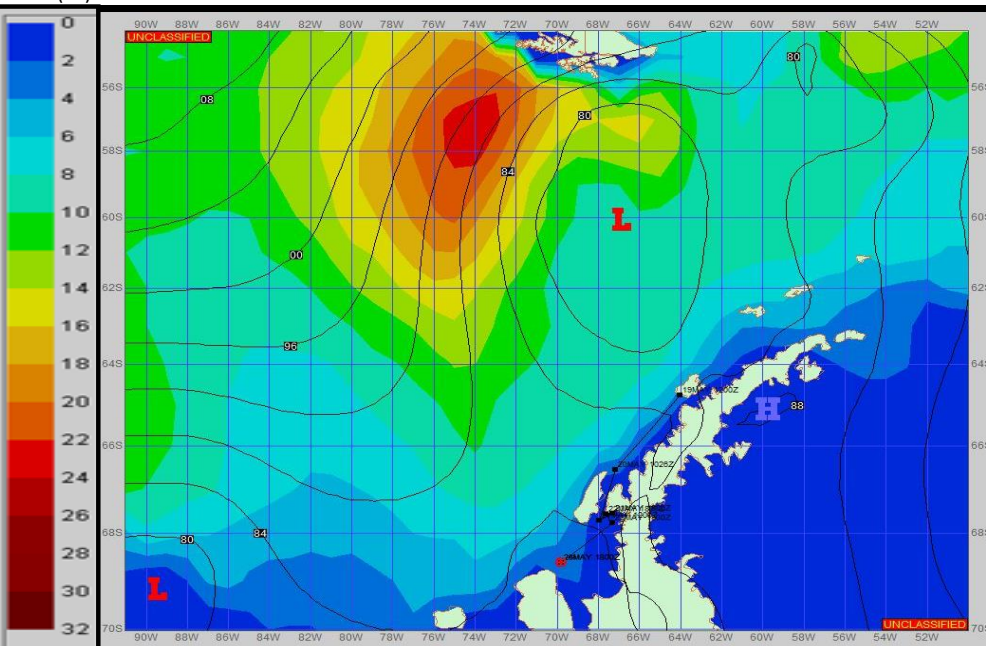
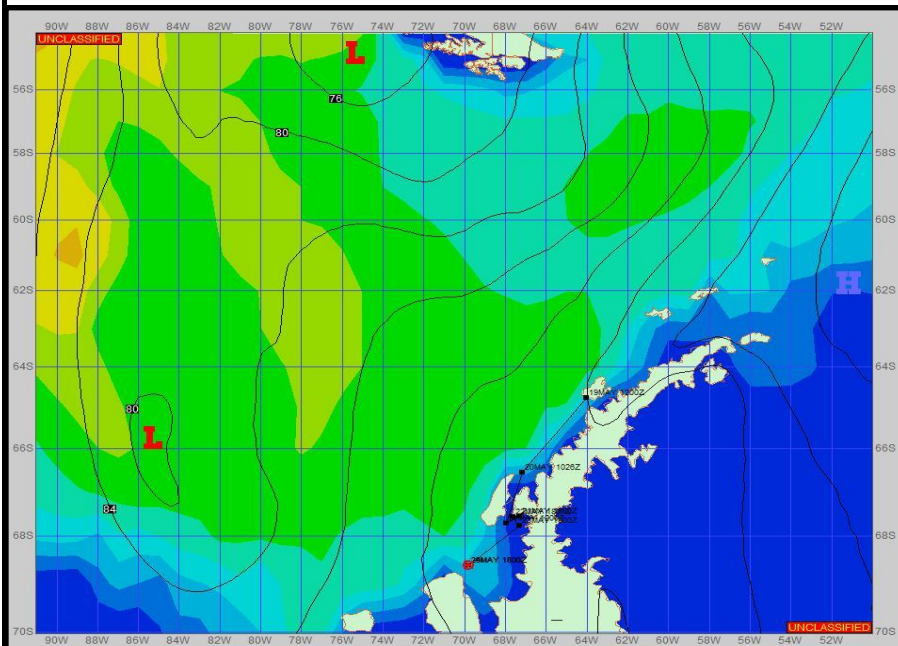


**SURFACE ANALYSIS 24-May-2023 18Z**

Seas (FT)

**SURFACE FORECAST 26-May-2023 06Z**



**METSIT 21Z 24-May** low pressure moves from west to east into the Drake with a cold front moves through with a trough following behind. Conditions remain cloudy with occasional snow continuing, but will be more associated with the front/trough. Winds will be moderate and variable through the forecast period with stronger winds starting at the end of the period as a strong pressure gradient develops. Sea states remain low and steady. Winds may differ from those forecast due to funneling/sheltering effects of islands.

**FORECASTER NOTES** MCMURDO STATION WINTER OPERATIONS ARE IN EFFECT. WEAX SUPPORT WILL BE DONE BY THE MCMURDO STATION WEATHER OFFICE AND ISSUED BY 2100Z. SEE CONTACT INFO BELOW.

VALID TIME	24-May 21Z	25-May 06Z	25-May 12Z	25-May 18Z	26-May 00Z	26-May 06Z	26-May 12Z	26-May 18Z
SKY CONDITION	CLOUDY	CLOUDY	CLOUDY	CLOUDY	CLOUDY	CLOUDY	CLOUDY	CLOUDY
WEATHER	SNOW	NONE	NONE	SNOW & FOG	SNOW & FOG	SNOW & FOG	SNOW & FOG	NONE
VISIBILITY (NM)	3 - 5	3 - 5	4 - 6	1 - 3	1 - 3	1 - 3	3 - 5	4 - 6
SFC WINDS (DIR & KTS)	SW 5-10	NW 15-20	NW 15-20	W 8-12	S 5-10	SE 15-20	E 20-25 GUST 35	E 15-20 GUST 25
SFC MAX/MIN (°C)	0 / -1				0 / -4			
SST RANGE (°C)	0 / -1				0 / -1			
SEAS (DIR & FT)	NW 4-6	NW 4-6	NW 2-4	NW 2-4	NW 2-4	NW 2-4	NW 2-4	NW 0-2
ICE ACCRETION	MODERATE	MODERATE	LIGHT	MODERATE	LIGHT	LIGHT	LIGHT	LIGHT