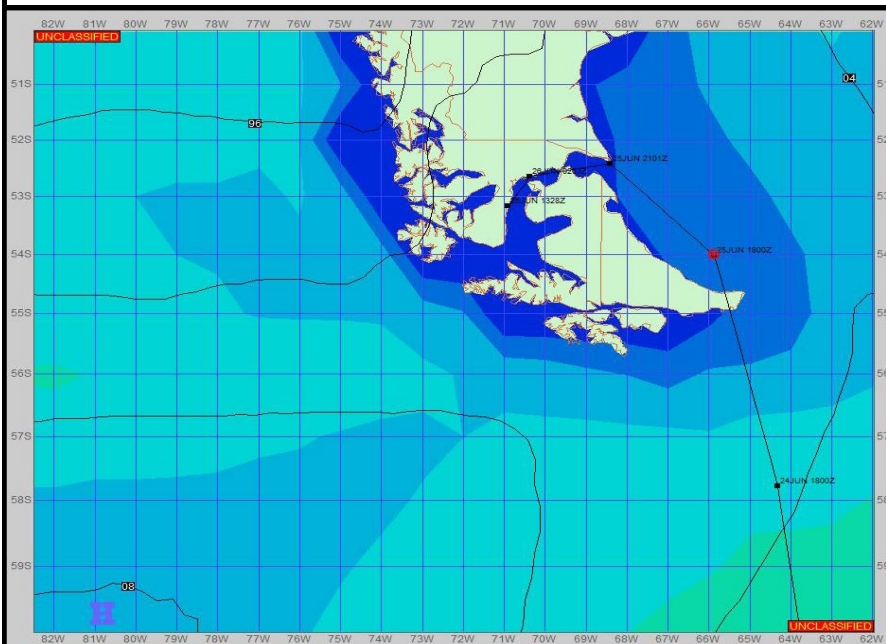


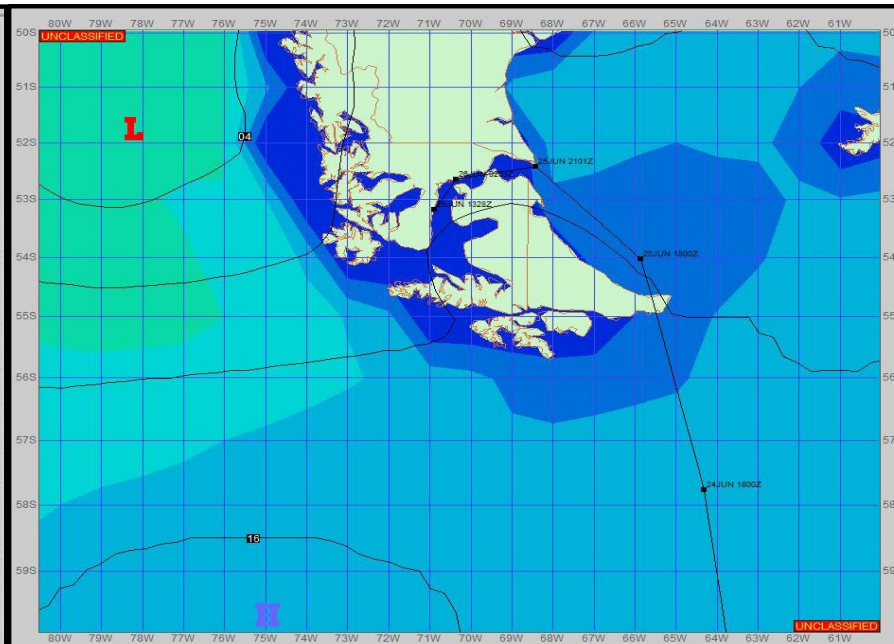
**SURFACE ANALYSIS 25-Jun-2023 18Z**



Seas (FT)



**SURFACE FORECAST 27-Jun-2023 06Z**



**METSIT 21Z 25-Jun**

High pressure continues to dominate the region. Winds may differ from those forecast due to funneling/sheltering effects of islands. This is my final forecast unless otherwise required. Timely observations received from your ship are greatly appreciated. Welcome home, outlook for arrival at Punta Arenas: Cloudy with rain and snow in the morning. Snow showers in the afternoon. Winds ESE 10-15kts.

**FORECASTER NOTES**

MCMURDO STATION WINTER OPERATIONS ARE IN EFFECT. WEAX SUPPORT WILL BE DONE BY THE MCMURDO STATION WEATHER OFFICE AND ISSUED BY 2100Z. SEE CONTACT INFO BELOW.

VALID TIME	25-Jun 21Z	26-Jun 06Z	26-Jun 12Z	26-Jun 18Z	27-Jun 00Z	27-Jun 06Z	27-Jun 12Z	27-Jun 18Z
SKY CONDITION	CLOUDY	CLOUDY	CLOUDY	MOSTLY CLOUDY				
WEATHER	RAIN	MIXED	MIXED & FOG	MIXED				
VISIBILITY (NM)	UNRESTRICTED	UNRESTRICTED	UNRESTRICTED	UNRESTRICTED				
SFC WINDS (DIR & KTS)	W 5-10	W 5-10	W 5-10	W 10-15				
SFC MAX/MIN (°C)	3 / 1							
SST RANGE (°C)	7 / 6							
SEAS (DIR & FT)	SW 0-2	SW 0-2	SW 0-2	SW 0-2				
ICE ACCRETION	NIL	NIL	NIL	NIL				