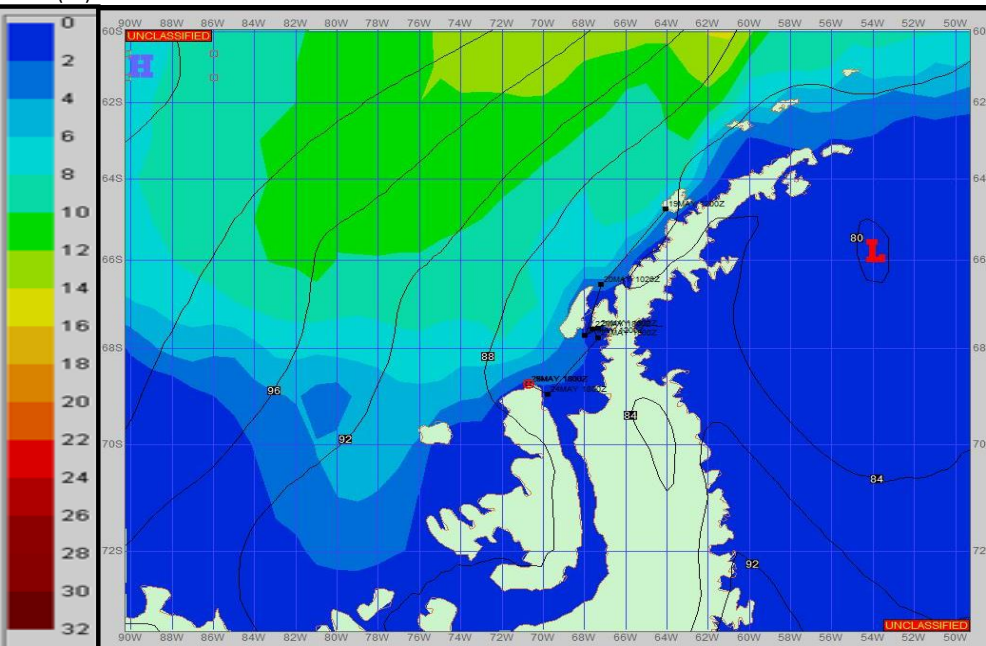
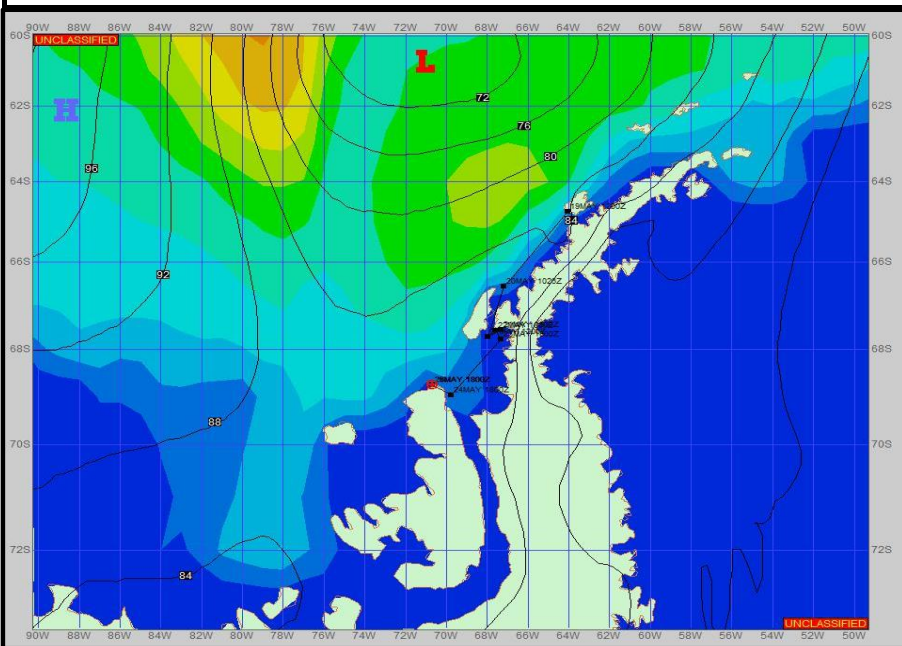


**SURFACE ANALYSIS 25-May-2023 18Z**

Seas (FT)

**SURFACE FORECAST 27-May-2023 06Z**



**METSIT 21Z 25-May** The low pressure systems fill and/or move out bringing in some fairly calm weather for most of the forecast period. However, any movement towards west side of Alexander Island, winds can be gusty up to ~35kts, while the east side will generally be light and variable. Sea states remain low and steady, but could also be a bit higher out west, in open waters. Winds may differ from those forecast due to funneling/sheltering effects of islands.

**FORECASTER NOTES** MCMURDO STATION WINTER OPERATIONS ARE IN EFFECT. WEAX SUPPORT WILL BE DONE BY THE MCMURDO STATION WEATHER OFFICE AND ISSUED BY 2100Z. SEE CONTACT INFO BELOW.

VALID TIME	25-May 21Z	26-May 06Z	26-May 12Z	26-May 18Z	27-May 00Z	27-May 06Z	27-May 12Z	27-May 18Z
SKY CONDITION	CLOUDY	CLOUDY	CLOUDY	CLOUDY	MOSTLY CLOUDY	MOSTLY CLOUDY	MOSTLY CLOUDY	MOSTLY CLOUDY
WEATHER	NONE	NONE	NONE	NONE	NONE	NONE	NONE	NONE
VISIBILITY (NM)	4 - 6	4 - 6	4 - 6	UNRESTRICTED	UNRESTRICTED	UNRESTRICTED	UNRESTRICTED	UNRESTRICTED
SFC WINDS (DIR & KTS)	VRB 5-10	VRB 5-10	E 10-15 GUST 20	E 10-15 GUST 20	E 10-15	E 10-15	VRB 5-10	VRB 5-10
SFC MAX/MIN (°C)	-2 / -4				-3 / -4			
SST RANGE (°C)	-1 / -2				-1 / -2			
SEAS (DIR & FT)	N 2-4	N 2-4	NE 2-4	NE 2-4	NW 2-4	NW 2-4	NW 2-4	NW 2-4
ICE ACCRETION	LIGHT	LIGHT	MODERATE	MODERATE	LIGHT	LIGHT	LIGHT	LIGHT