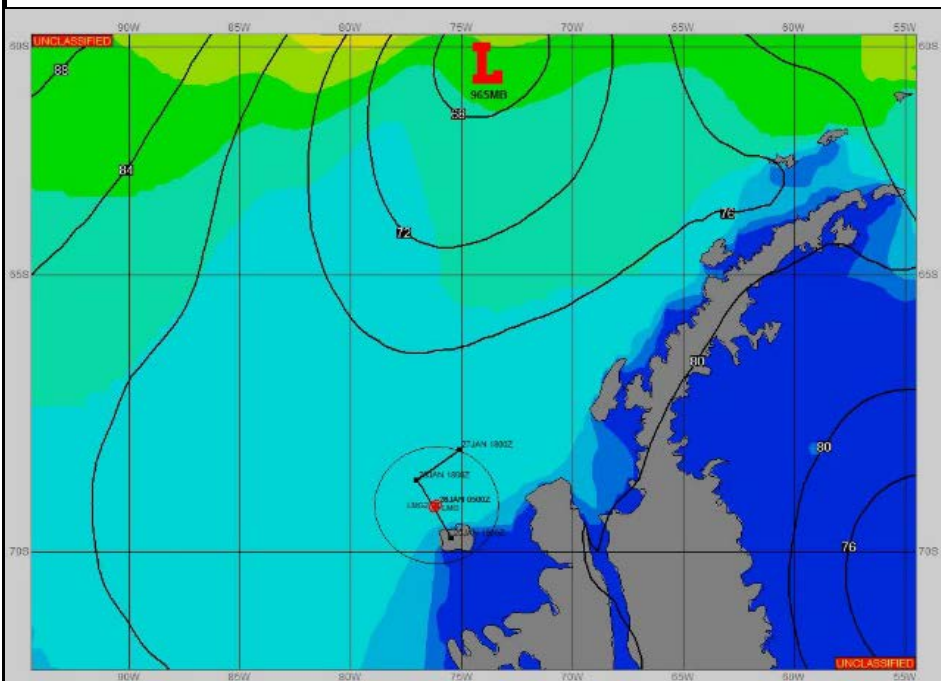
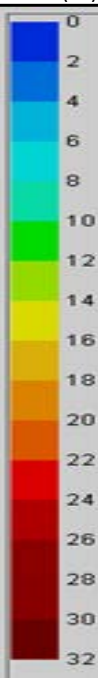


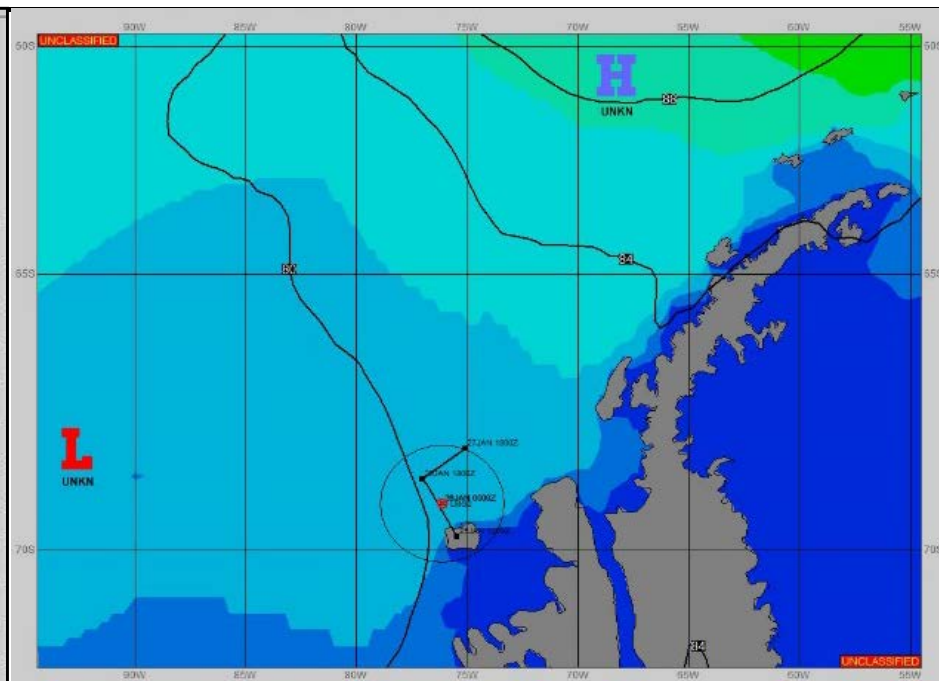
**SURFACE ANALYSIS 26-Jan-2023 06Z**



Seas (FT)



**SURFACE FORECAST 27-Jan-2023 18Z**



**METSIT 06Z 26-Jan** PRESSURE GRADIENT EASES AS 965MB LOW NEAR 60S 074W FILLS AND MOVES EAST THROUGH DRAKE'S PASSAGE THROUGH 27/0000Z. TRANSIENT HIGH PRESSURE MOVING EAST IN THE FLOW PASSES AGAINST WEAK LOW PRESSURE IN THE SOUTHERN BELLINGHAUSEN SEA INCREASING THE NORTHERLY WINDS FROM 27/0600Z.

**FORECASTER NOTES** WINDS MAY DIFFER FROM THOSE FORECAST DUE TO FUNNELING/SHELTERING EFFECTS OF ISLANDS.

VALID TIME	26-Jan 12Z	26-Jan 18Z	27-Jan 00Z	27-Jan 06Z	27-Jan 12Z	27-Jan 18Z	28-Jan 00Z	28-Jan 06Z
SKY CONDITION	CLOUDY	CLOUDY	CLOUDY	CLOUDY	CLOUDY	CLOUDY	CLOUDY	CLOUDY
WEATHER	NONE	NONE	NONE	NONE	NONE	NONE	FOG	FOG
VISIBILITY (NM)	UNRESTRICTED	UNRESTRICTED	UNRESTRICTED	UNRESTRICTED	UNRESTRICTED	UNRESTRICTED	1 - 3	1 - 3
SFC WINDS (DIR & KTS)	NE 5-10	N 5-10	NW 5-10	NW 10-15	N 10-15	NW 10-15	N 15-20	NE 15-20
SFC MAX/MIN (°C)	2/0				2/0			
SST RANGE (°C)	1/0				1/0			
SEAS (DIR & FT)	NE 5-7	N 5-7	NW 5-7	NW 5-7	NW 5-7	NW 4-6	NW 4-6	NW 4-6
ICE ACCRETION	NIL	NIL	NIL	NIL	NIL	NIL	NIL	NIL