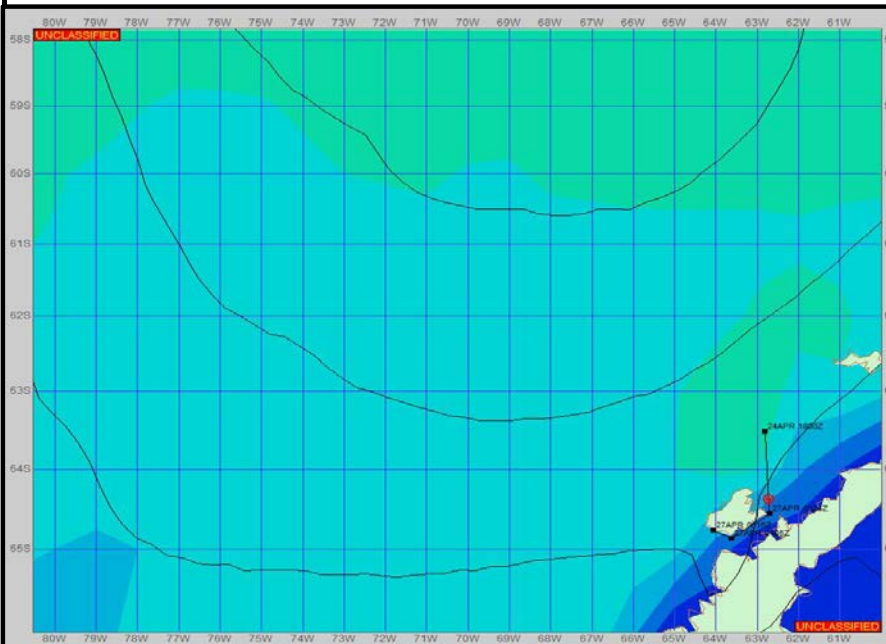
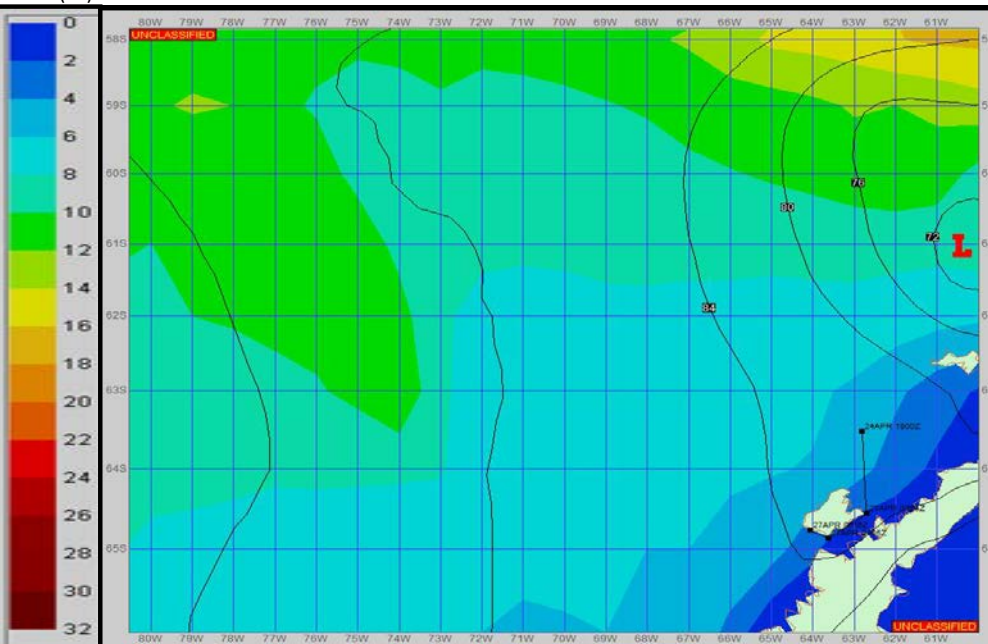


**SURFACE ANALYSIS 26-Apr-2023 18Z**



Seas (FT)

**SURFACE FORECAST 28-Apr-2023 06Z**



**METSIT 21Z 26-Apr** A pretty weak, but deepening low pressure system tracks west to east through the Drake. A cold pushes through Palmer Station bringing snow before ending mid-forecast period. This is my final forecast unless otherwise required. Timely observations received from your ship are greatly appreciated. Outlook for arrival at your destination:  
 Mostly cloudy with generally light northwesterly winds. Sea states remain low. Later in the week and through the weekend another low pressure system starts impacting Palmer with more snow and by late weekend winds expecting to pickup significantly.

**FORECASTER NOTES** MCMURDO STATION WINTER OPERATIONS ARE IN EFFECT. WEAX SUPPORT WILL BE DONE BY THE MCMURDO STATION WEATHER OFFICE AND ISSUED BY 2100Z. SEE CONTACT INFO BELOW.

VALID TIME	26-Apr 21Z	27-Apr 06Z	27-Apr 12Z	27-Apr 18Z	28-Apr 00Z	28-Apr 06Z	28-Apr 12Z	28-Apr 18Z
SKY CONDITION	MOSTLY CLOUDY	MOSTLY CLOUDY	CLOUDY	CLOUDY	CLOUDY	CLOUDY	CLOUDY	CLOUDY
WEATHER	NONE	SNOW	SNOW	SNOW & FOG	NONE	NONE	NONE	NONE
VISIBILITY (NM)	UNRESTRICTED	UNRESTRICTED	UNRESTRICTED	1 - 3	2 - 4	UNRESTRICTED	UNRESTRICTED	UNRESTRICTED
SFC WINDS (DIR & KTS)	W 5-10	NW 10-15	VRB 4-8	WNW 10-15	NW 10-15	NW 8-12	NW 5-10	NW 5-10
SFC MAX/MIN (°C)	-2 / -3				-1 / -4			
SST RANGE (°C)	1 / 0				1 / 0			
SEAS (DIR & FT)	NW 2-4	W 2-4	NW 4-6	NW 2-4	NW 0-2	NW 0-2	NW 0-2	NW 0-2
ICE ACCRETION	NIL	LIGHT	LIGHT	LIGHT	NIL	NIL	NIL	NIL