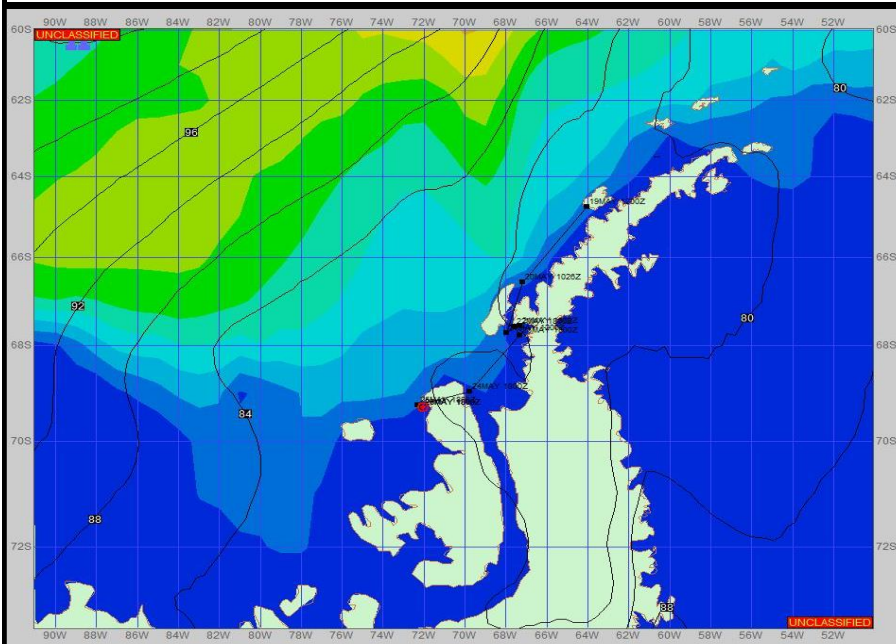


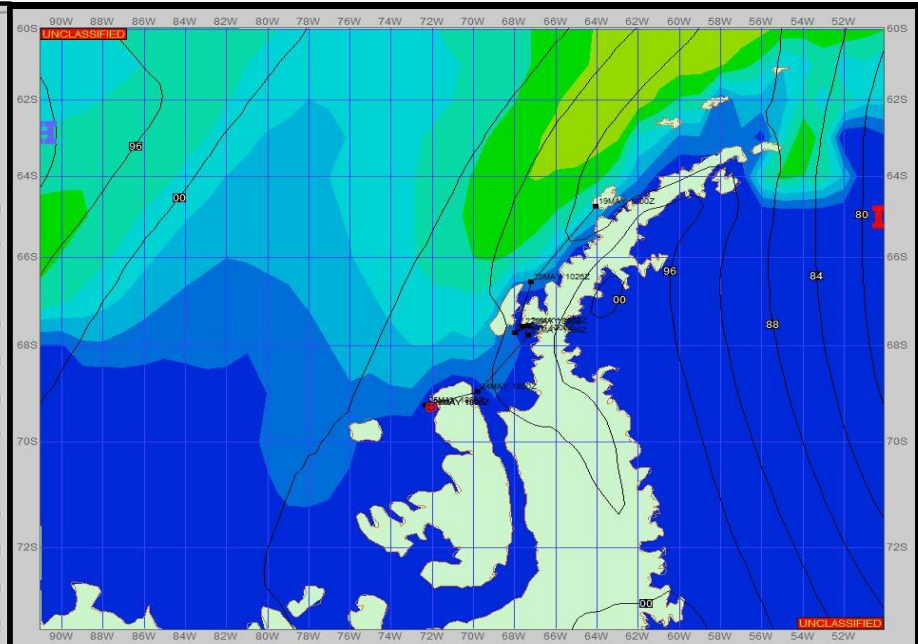
SURFACE ANALYSIS 26-May-2023 18Z



Seas (FT)



SURFACE FORECAST 28-May-2023 06Z



METSIT 21Z 26-May A weak pressure gradient in between pressure systems will present fairly calm conditions. There will be slightly stronger winds, but nothing hugely significant. If heading to the north side of the island, winds are stronger, forecasted to be gusting in the 30s.

FORECASTER NOTES MCMURDO STATION WINTER OPERATIONS ARE IN EFFECT. WEAX SUPPORT WILL BE DONE BY THE MCMURDO STATION WEATHER OFFICE AND ISSUED BY 2100Z. SEE CONTACT INFO BELOW.

VALID TIME	26-May 21Z	27-May 06Z	27-May 12Z	27-May 18Z	28-May 00Z	28-May 06Z	28-May 12Z	28-May 18Z
SKY CONDITION	CLOUDY	CLOUDY	MOSTLY CLOUDY	MOSTLY CLOUDY	MOSTLY CLOUDY	PARTLY CLOUDY	PARTLY CLOUDY	PARTLY CLOUDY
WEATHER	NONE	NONE	NONE	NONE	NONE	NONE	NONE	NONE
VISIBILITY (NM)	4 - 6	4 - 6	4 - 6	UNRESTRICTED	UNRESTRICTED	UNRESTRICTED	UNRESTRICTED	UNRESTRICTED
SFC WINDS (DIR & KTS)	N 10-15 GUST 25	NE 10-15 GUST 20	NE 10-15 GUST 20	NE 15-20	NE 15-20	NE 10-15	NE 10-15	NE 5-10
SFC MAX/MIN (°C)	-8 / -9				-9 / -10			
SST RANGE (°C)	-1 / -2				-1 / -2			
SEAS (DIR & FT)	NE 2-4	NW 2-4	NW 2-4	NW 2-4	NW 0-2	NW 0-2	NW 0-2	NW 2-4
ICE ACCRETION	MODERATE	LIGHT	LIGHT	LIGHT	LIGHT	LIGHT	LIGHT	LIGHT