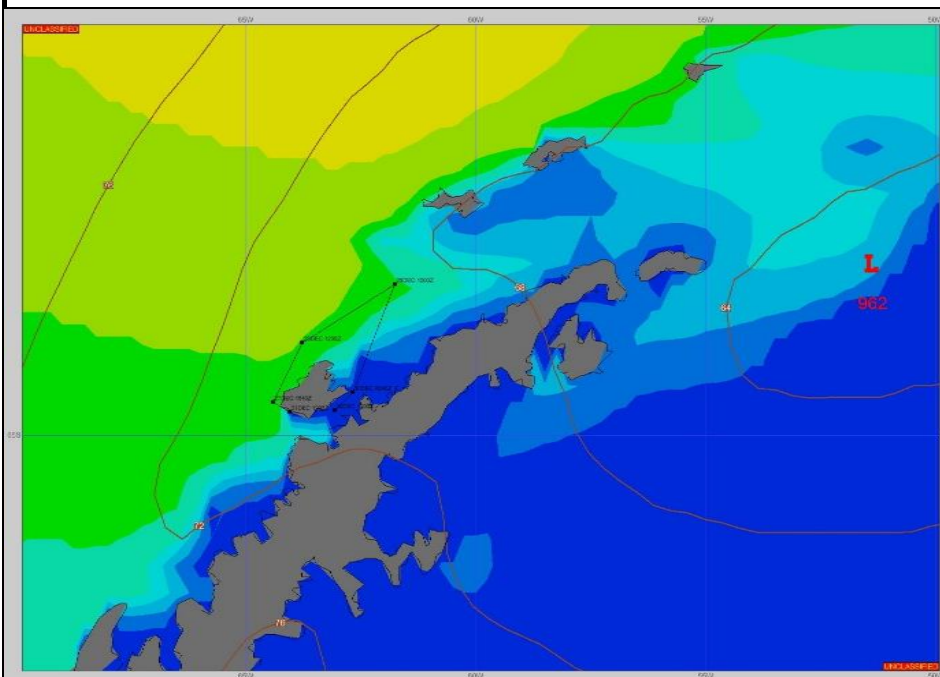


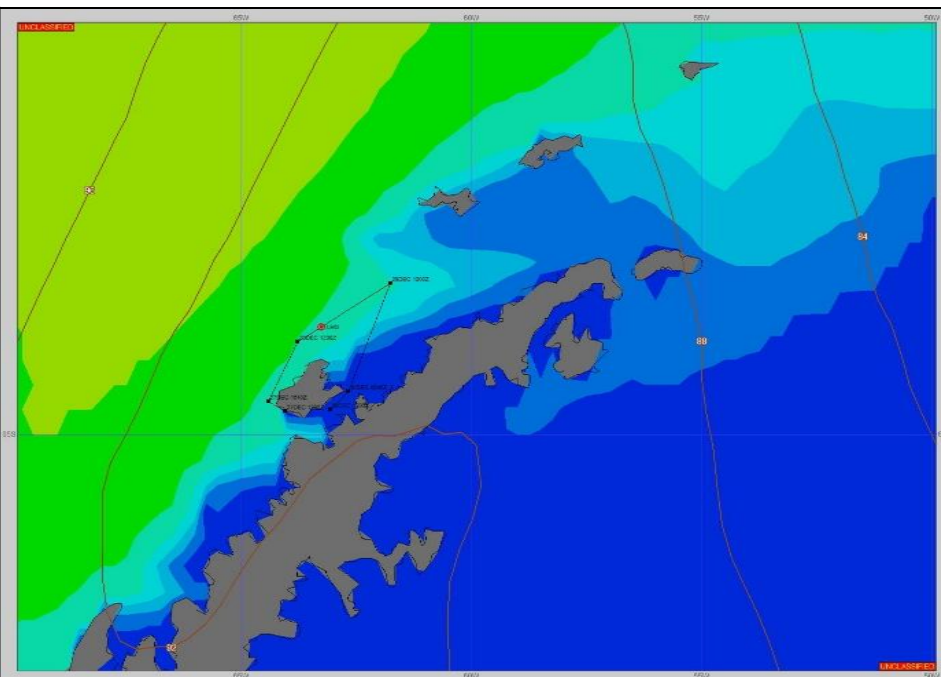
SURFACE ANALYSIS 27-Dec-2023 06Z



Seas (FT)



SURFACE FORECAST 28-Dec-2023 18Z



METSIT 06Z 27-Dec A 962MB LOW TRANSITS THE DRAKE PASSAGE TODAY TRAILING A TROUGH ALONG THE WEST COAST OF THE ANTARCTIC PENINSULA. THIS SYSTEM IS PRODUCING EXTENSIVE CLOUD COVER FOR THE AREA AROUND ANVERS ISLAND. EXPECT SMOOTH SEAS IN PORT BUILDING TO SLIGHT TOWARD OPEN WATER AND BECOMING MODERATE AS YOU HEAD OUT INTO THE BELLINGSHAUSEN SEA. GENTLE WINDS WILL BECOME A MODERATE BREEZE AS YOU LEAVE THE SHELTER OF THE ISLAND.

FORECASTER NOTES Winds may differ from those forecast due to vicinity of Anvers Island.

VALID TIME	27-Dec 12Z	27-Dec 18z	28-Dec 00Z	28-Dec 06Z	28-Dec 12Z	28-Dec 18Z	29-Dec 00Z	29-Dec 06Z
SKY CONDITION	PARTLY CLOUDY	PARTLY CLOUDY	MOSTLY CLOUDY	MOSTLY CLOUDY	MOSTLY CLOUDY	PARTLY CLOUDY	PARTLY CLOUDY	PARTLY CLOUDY
WEATHER	NONE	NONE	FOG	FOG	FOG	NONE	NONE	NONE
VISIBILITY (NM)	UNRESTRICTED	UNRESTRICTED	1 - 3	1/2 - 1	3 - 5	UNRESTRICTED	UNRESTRICTED	UNRESTRICTED
SFC WINDS (DIR & KTS)	S 5-10	SSW 10-15	SW 10-15	SSW 10-15	SSW 5-10	S 5-10	S 5-10	SW 5-10
SFC MAX/MIN (°C)	5/1							
SST RANGE (°C)	9/6							
SEAS (DIR & FT)	< 1 IP, S 2-4 OW	W 6-8	W 7-9	WSW 7-9	WSW 7-9	WSW 7-9	WSW 7-9	WSW 5-7
ICE ACCRETION	NIL	NIL	NIL	NIL	NIL	NIL	NIL	NIL