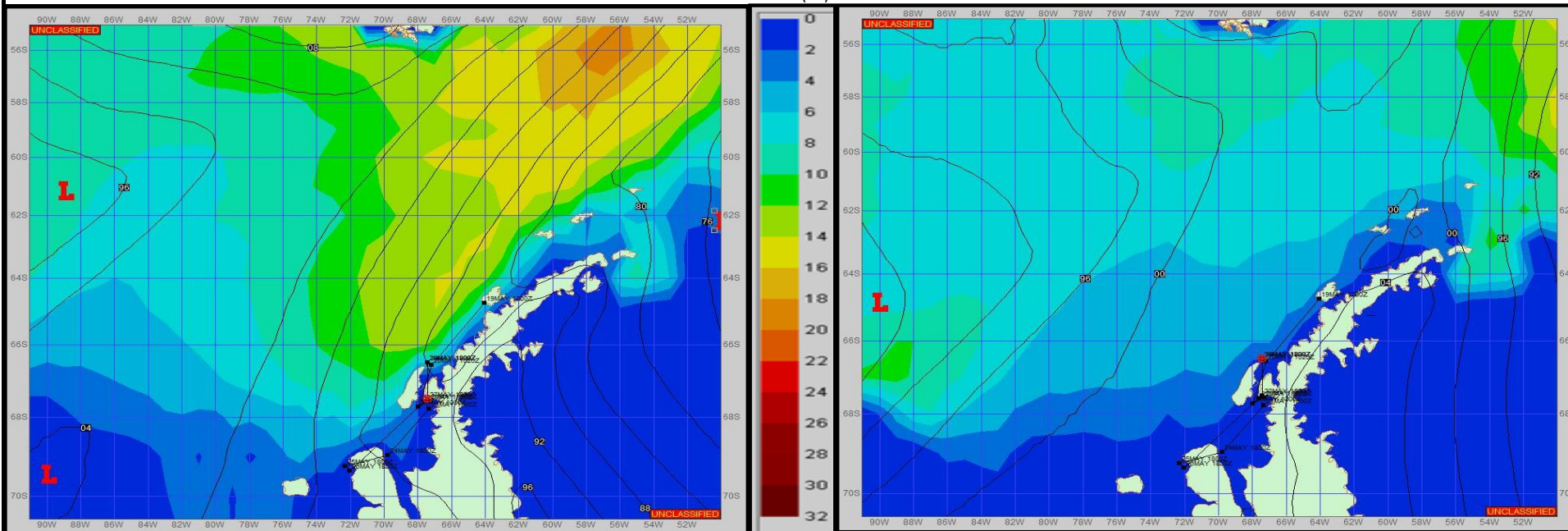


SURFACE ANALYSIS 27-May-2023 18Z

Seas (FT)

SURFACE FORECAST 29-May-2023 06Z



METSIT 21Z 27-May A weak pressure gradient is present, although not all that tight, but keeps with the generally light winds and sea states. No real impressive weather systems are forecasted for the science area over the nex few days. Winds may differ from those forecast due to funneling/sheltering effects of islands.

FORECASTER NOTES MCMURDO STATION WINTER OPERATIONS ARE IN EFFECT. WEAX SUPPORT WILL BE DONE BY THE MCMURDO STATION WEATHER OFFICE AND ISSUED BY 2100Z. SEE CONTACT INFO BELOW.

VALID TIME	27-May 21Z	28-May 06Z	28-May 12Z	28-May 18Z	29-May 00Z	29-May 06Z	29-May 12Z	29-May 18Z
SKY CONDITION	CLOUDY	CLOUDY	PARTLY CLOUDY	PARTLY CLOUDY	PARTLY CLOUDY	PARTLY CLOUDY	PARTLY CLOUDY	MOSTLY CLOUDY
WEATHER	NONE	NONE	NONE	NONE	NONE	NONE	NONE	NONE
VISIBILITY (NM)	4 - 6	UNRESTRICTED	UNRESTRICTED	UNRESTRICTED	UNRESTRICTED	UNRESTRICTED	UNRESTRICTED	4 - 6
SFC WINDS (DIR & KTS)	N 10-15	NE 10-15	NE 10-15	NE 15-20	N 10-15	W 5-10	WSW 10-15	WSW 10-15
SFC MAX/MIN (°C)	-5 / -6				-4 / -5			
SST RANGE (°C)	-1 / -2				-1 / -2			
SEAS (DIR & FT)	SW 0-2	NW 0-2	SW 0-2	NE 2-4	W 2-4	NW 2-4	NW 2-4	NW 2-4
ICE ACCRETION	LIGHT	LIGHT	LIGHT	LIGHT	LIGHT	LIGHT	LIGHT	LIGHT