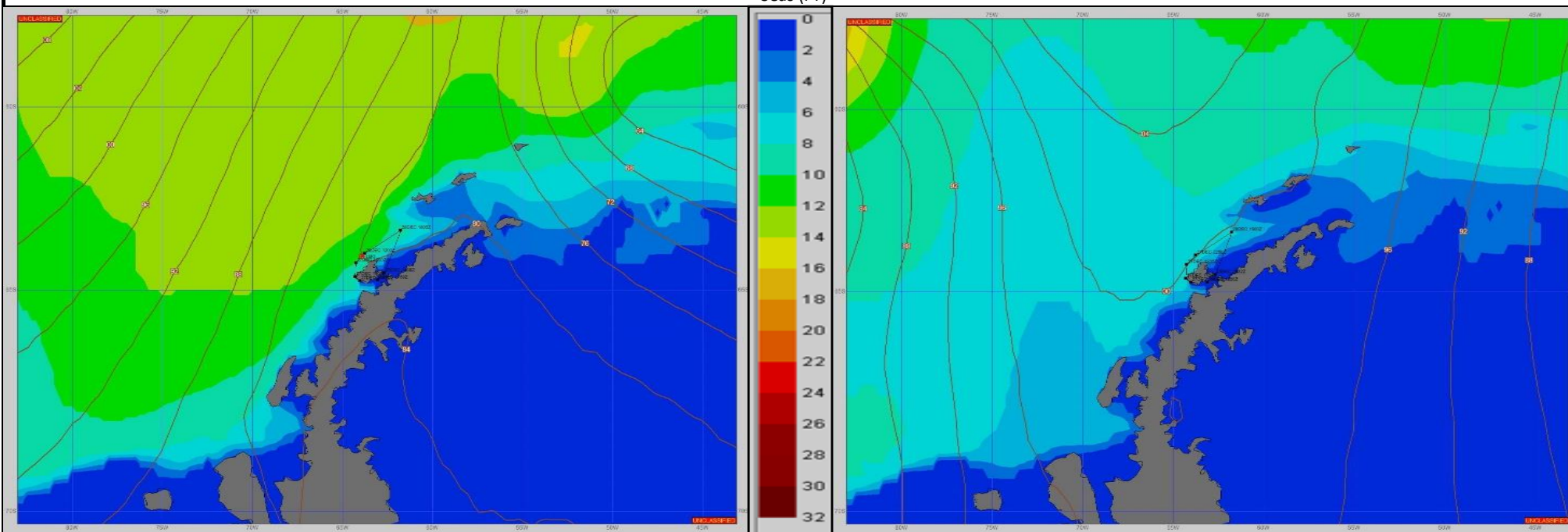


**SURFACE ANALYSIS 28-Dec-2023 06Z**

**SURFACE FORECAST 29-Dec-2023 18Z**



**METSIT 06Z 28-Dec** A 961MB LOW MOVES OVER THE WEDDELL SEA TODAY TRAILING A WEAK TROUGH ALONG THE WEST COAST OF THE ANTARCTIC PENINSULA LEAVING A LEGACY OF RESIDUAL CLOUD COVER FOR THE AREA AROUND ANVERS ISLAND. EXPECT MODERATE SEAS BECOMING SLIGHT AS THE DAY PROGRESSES AND A LIGHT BREEZE IS FORECAST AS HIGHER PRESSURE MOVES OVER YOUR AREA.

**FORECASTER NOTES** Winds may differ from those forecast due to vicinity of Anvers Island.

VALID TIME	28-Dec 12Z	28-Dec 18z	29-Dec 00Z	29-Dec 06Z	29-Dec 12Z	29-Dec 18Z	30-Dec 00Z	30-Dec 06Z
<b>SKY CONDITION</b>	MOSTLY CLOUDY	PARTLY CLOUDY	PARTLY CLOUDY	PARTLY CLOUDY	PARTLY CLOUDY	PARTLY CLOUDY	MOSTLY CLOUDY	MOSTLY CLOUDY
<b>WEATHER</b>	NONE	NONE	NONE	NONE	NONE	NONE	NONE	FOG
<b>VISIBILITY (NM)</b>	UNRESTRICTED	UNRESTRICTED	UNRESTRICTED	UNRESTRICTED	UNRESTRICTED	UNRESTRICTED	UNRESTRICTED	4 - 6
<b>SFC WINDS (DIR &amp; KTS)</b>	VRB 2-7	VRB 2-7	VRB 0-5	VRB 0-5	VRB 0-5	VRB 0-5	VRB 0-5	VRB 0-5
<b>SFC MAX/MIN (°C)</b>	5/1							
<b>SST RANGE (°C)</b>	9/6							
<b>SEAS (DIR &amp; FT)</b>	W 5-7	W 4-6	W 3-5	W 1-3	NW 0-2	SSW 0-2	SSW 0-2	SSW 0-2
<b>ICE ACCRETION</b>	NIL	NIL	NIL	NIL	NIL	NIL	NIL	NIL