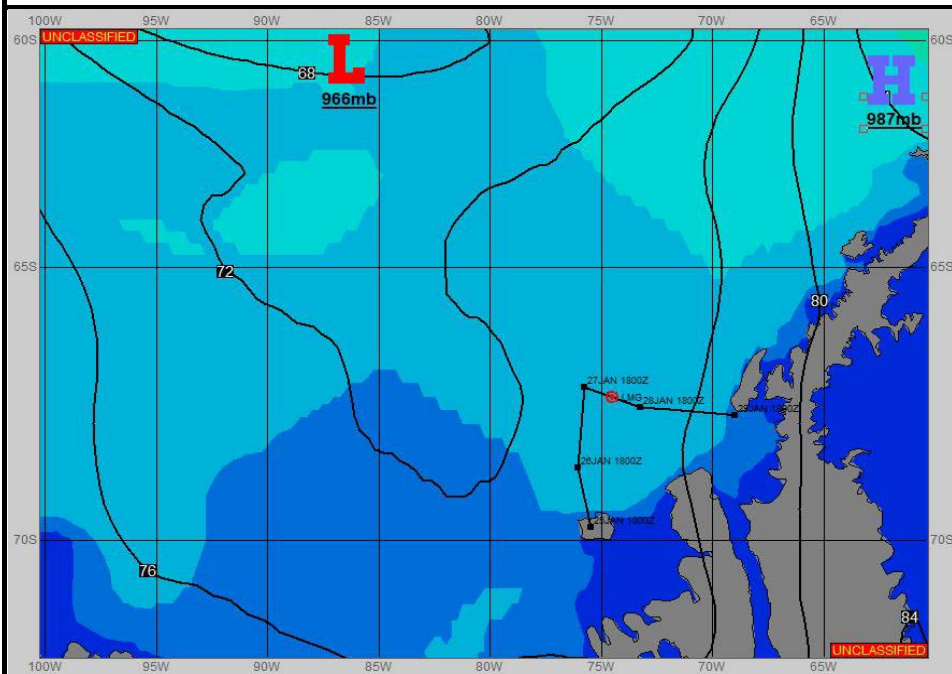
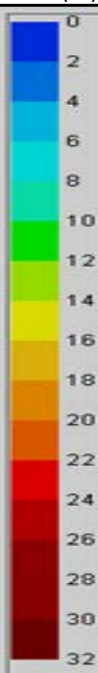


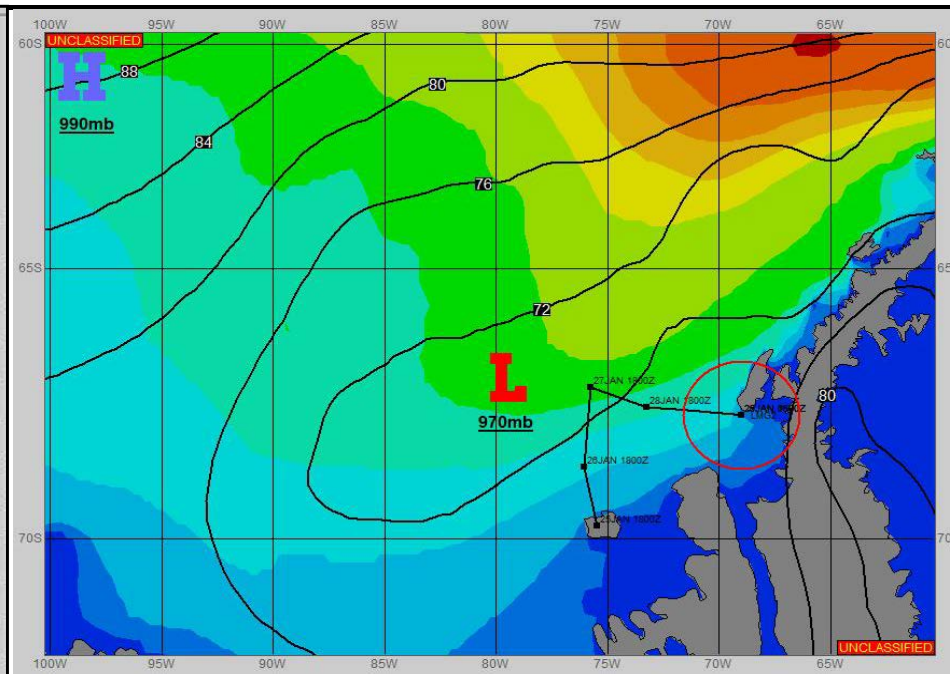
SURFACE ANALYSIS 28-Jan-2023 06Z



Seas (FT)



SURFACE FORECAST 29-Jan-2023 18Z



METSIT 06Z 28-Jan WEAK LOW PRESSURE REMAINS IN PLACE OVER THE BELLINGSHAUSEN SEA. CLOUDINESS ALONG WITH PRECIP AND FOG WILL KEEP THINGS ON THE GLOOMY SIDE TODAY. ALTHOUGH THE CENTRAL POINT OF THE LOW WILL MEANDER AROUND A BIT, THE MODERATE BREEZE WILL GENERALLY REMAIN OUT OF THE NORTHEAST BEFORE WEAKENING TOMORROW.

FORECASTER NOTES WINDS MAY DIFFER FROM THOSE FORECAST DUE TO FUNNELING/SHELTERING EFFECTS OF ISLANDS.

VALID TIME	28-Jan 12Z	28-Jan 18Z	29-Jan 00Z	29-Jan 06Z	29-Jan 12Z	29-Jan 18Z	30-Jan 00Z	30-Jan 06Z
SKY CONDITION	CLOUDY	CLOUDY	CLOUDY	CLOUDY	CLOUDY	CLOUDY	CLOUDY	CLOUDY
WEATHER	MIXED & FOG	MIXED & FOG	MIXED & FOG	MIXED & FOG	FOG	FOG	FOG	FOG
VISIBILITY (NM)	1/2 - 1	1/2 - 1	1 - 3	1 - 3	1/2 - 1	1/2 - 1	<1/2	<1/2
SFC WINDS (DIR & KTS)	NE 15-20 GUST 25	NE 15-20	NE 10-15 GUST 20	NE 10-15 GUST 20	E 10-15	NE 10-15	NE 5-10	NE 5-10
SFC MAX/MIN (°C)	1/-1				0/-5			
SST RANGE (°C)	1/0				2/0			
SEAS (DIR & FT)	N 4-6	N 5-7	N 5-7	N 4-6	NW 4-6	NW 3-5	NW 7-9	NW 7-9
ICE ACCRETION	LIGHT	LIGHT	LIGHT	LIGHT	LIGHT	LIGHT	LIGHT	LIGHT