

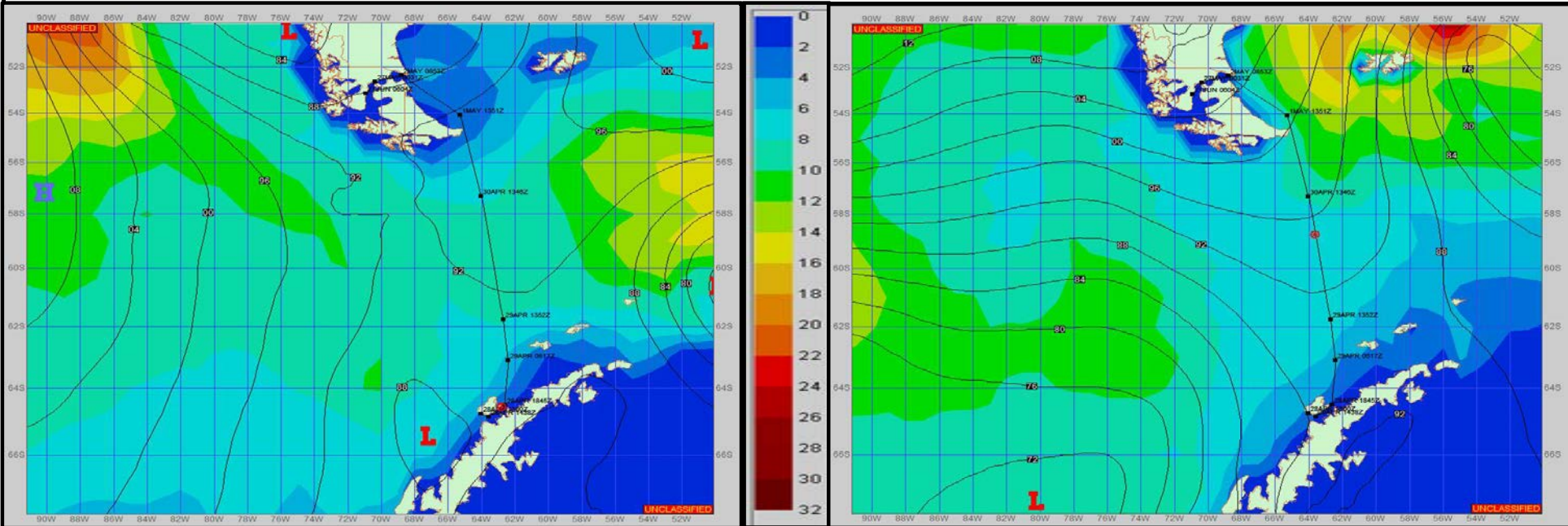
Ref A: MOVE REP 23-04 NB

Ref B:

**SURFACE ANALYSIS 28-Apr-2023 18Z**

Seas (FT)

**SURFACE FORECAST 30-Apr-2023 06Z**



**METSIT 21Z 28-Apr** Winds start to pickup as the heading out into the open waters with a tight pressure gradient between high pressure west of the continent and a low pressure in the Bellingshausen Sea. Sea states will remain steady during the trek. Late in the forecast as the low moves north, it'll be race to get around to the eastern side as a massive sea swell will be moving in after this forecast period.

**FORECASTER NOTES** MCMURDO STATION WINTER OPERATIONS ARE IN EFFECT. WEAX SUPPORT WILL BE DONE BY THE MCMURDO STATION WEATHER OFFICE AND ISSUED BY 2100Z. SEE CONTACT INFO BELOW.

VALID TIME	28-Apr 21Z	29-Apr 06Z	29-Apr 12Z	29-Apr 18Z	30-Apr 00Z	30-Apr 06Z	30-Apr 12Z	30-Apr 18Z
SKY CONDITION	CLOUDY	CLOUDY	MOSTLY CLOUDY	MOSTLY CLOUDY	MOSTLY CLOUDY	MOSTLY CLOUDY	CLOUDY	CLOUDY
WEATHER	NONE	SNOW & FOG	SNOW & FOG	NONE	NONE	NONE	NONE	NONE
VISIBILITY (NM)	4 - 6	1 - 3	2 - 4	UNRESTRICTED	UNRESTRICTED	UNRESTRICTED	UNRESTRICTED	UNRESTRICTED
SFC WINDS (DIR & KTS)	N 10-20	NW 10-20	SW 10-20 GUST 25	SW 10-20 GUST 25	SW 10-20 GUST 25	W 10-20	NW 15-20 GUST 25	NW 25-30 GUST 40
SFC MAX/MIN (°C)	0 / -1				4 / -1			
SST RANGE (°C)	1 / 1				2 / 2			
SEAS (DIR & FT)	NW 4-6	NW 6-8	W 6-8	SW 6-8	SW 6-8	SW 6-8	SW 6-8	SW 6-8
ICE ACCRETION	NIL	NIL	NIL	NIL	NIL	NIL	NIL	NIL