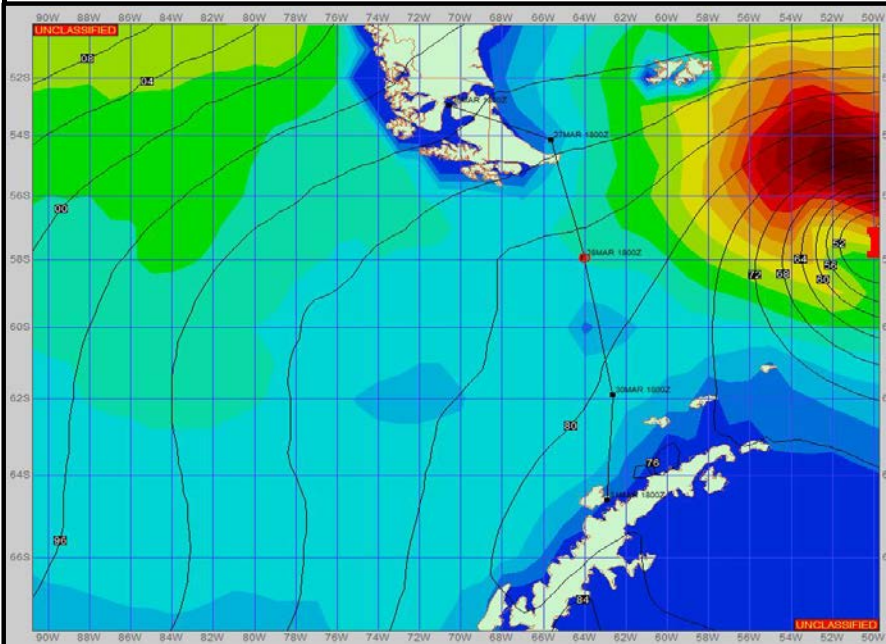
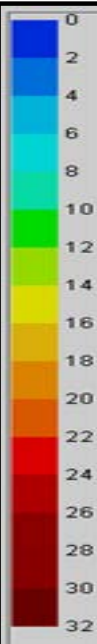


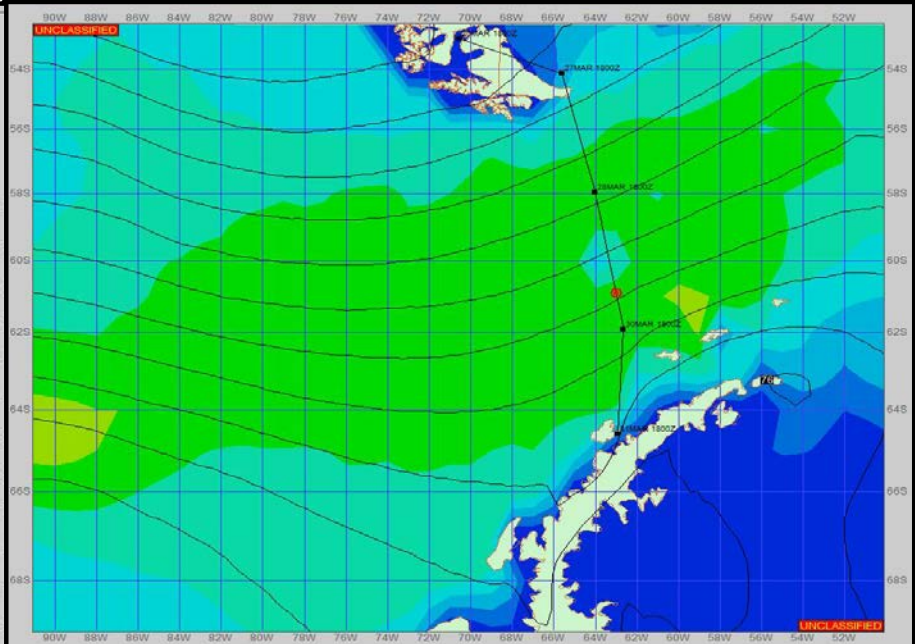
**SURFACE ANALYSIS 28-Mar-2023 18Z**



Seas (FT)



**SURFACE FORECAST 30-Mar-2023 06Z**



**METSIT 21Z 28-Mar** A low pressure system to the east continues to move away resulting in a general west to east flow across the Drake over the forecast period. Winds and sea states will increase during this timeframe as you move south toward the peninsula.

**FORECASTER NOTES** MCMURDO STATION WINTER OPERATIONS ARE IN EFFECT. WEAX SUPPORT WILL BE DONE BY THE MCMURDO STATION WEATHER OFFICE AND ISSUED BY 2100Z. SEE CONTACT INFO BELOW.

VALID TIME	28-Mar 21Z	29-Mar 06Z	29-Mar 12Z	29-Mar 18Z	30-Mar 00Z	30-Mar 06Z	30-Mar 12Z	30-Mar 18Z
SKY CONDITION	MOSTLY CLOUDY	MOSTLY CLOUDY	PARTLY CLOUDY	MOSTLY CLOUDY	CLOUDY	CLOUDY	CLOUDY	CLOUDY
WEATHER	NONE	NONE	NONE	NONE	NONE	NONE	NONE	NONE
VISIBILITY (NM)	UNRESTRICTED	UNRESTRICTED	4 - 6	4 - 6	UNRESTRICTED	4 - 6	UNRESTRICTED	UNRESTRICTED
SFC WINDS (DIR & KTS)	SW 10-20	SW 10-20	WSW 15-20 GUST 30	SW 20-25 GUST 35	WSW 20-25 GUST 35	W 20-25 GUST 35	W 20-25 GUST 30	WNW 20-25 GUST 30
SFC MAX/MIN (°C)	1 / 0				2 / 1			
SST RANGE (°C)	2 / 2				2 / 1			
SEAS (DIR & FT)	SW 6-8	SW 6-8	SW 6-8	SW 6-8	SW 8-10	SW 10-12	SW 10-12	SW 10-12
ICE ACCRETION	NIL	NIL	NIL	NIL	NIL	NIL	NIL	NIL